

FIG.17

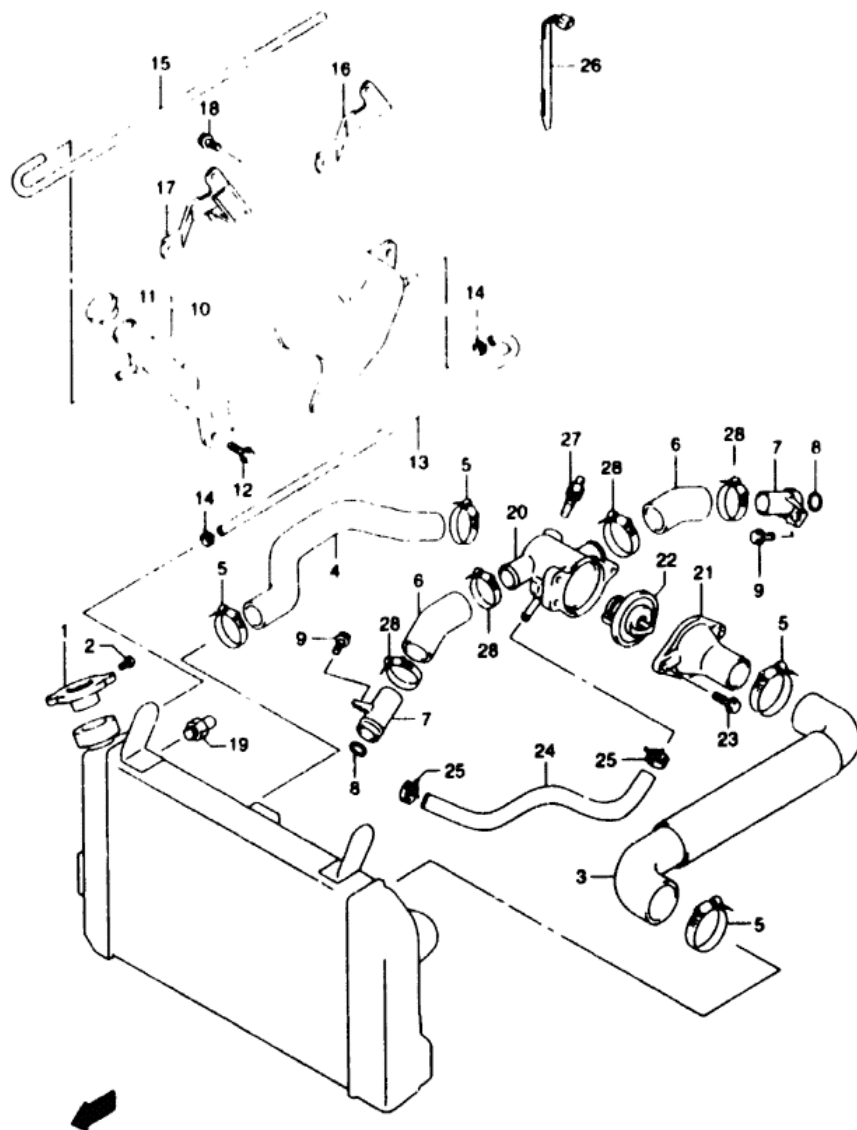


FIG 17 ( 1-7 )

## RADIATOR HOSE

REF.NO.	PART NO.	DESCRIPTION	Q'TY	REMARKS
1-1	17730-19D10	CAP. RADIATOR 1 1	1	SV650X
1-2	17730-19D11	CAP. RADIATOR 1 1	1	SV650Y
1-3	17730-12C20	CAP. RADIATOR	1	SV650SX/SY E28
2	17733-03D10	SCREW. RADIATOR CAP	1	SV650X/Y
3	17851-19F00	HOSE. RADIATOR INLET	1	
4	17852-19F00	HOSE. RADIATOR OUTLET	1	
5	09402-38511	CLAMP	4	
6	17853-19F00	HOSE CONNECTOR INLET	2	
7	17890-02F00	UNION CONNECTOR HOSE	2	
8	09280-18009	O RING	2	
9	07130-06123	BOLT	2	
10	17910-19F00	TANK ASSY. RESERVOIR	1	
11	17932-12C00	CAP. RESERVOIR TANK	1	
12	01550-06163	BOLT	2	
13	17981-19F00	HOSE. RESERVOIR TANK INLET	1	
14	09401-08411	CLIP	2	
15	09359-50901-980	HOSE. RESERVOIR TANK OVERFLOW (1 980)	1	
16	17920-19F10	BRACKET. RESERVOIR TANK	1	SV650X/Y
17	17920-19F00	BRACKET. RESERVOIR TANK	1	SV650SX/SY E28
18	01550-06123	BOLT	1	
19	17680-24A20	SWITCH. RADIATOR FAN	1	
20	17662-19F01	CONNECTOR. THERMOSTAT INLET	1	
21	17663-02FA0	CAP. THERMOSTAT CONNECTOR	1	
22	17670-50F00	THERMOSTAT. WATER (02C)	1	
23	01550-06163	BOLT	2	
24	17856-19F00	HOSE. CONNECTOR TO WATER PUMP	1	
25	09401-12409	CLAMP	2	
26	09407-14403	CLAMP (L.140)	1	
27	34850-44D20	SENSOR. WATER TEMPERATURE	1	
28	09402-28511	CLAMP	4	

20 SV650 Y E3/E33

D7

AIR CLEANER..... C-08	CRANKCASE COVER..... B-07	FRONT BRAKE HOSE..... I-07	REAR SHIFTING..... D-12	OPTIONAL..... J-07	REAR WHEEL..... J-04	TRANSMISSION..... D-10
BATTERY..... E-04	CRANKCASE..... B-05	FRONT CALIPER..... I-06	HANDLE BAR..... H-02	RADIATOR HOSE..... D-07	SEAT TAIL COVER..... H-11	TURNSIGNAL LAMP..... F-06

FIG.18

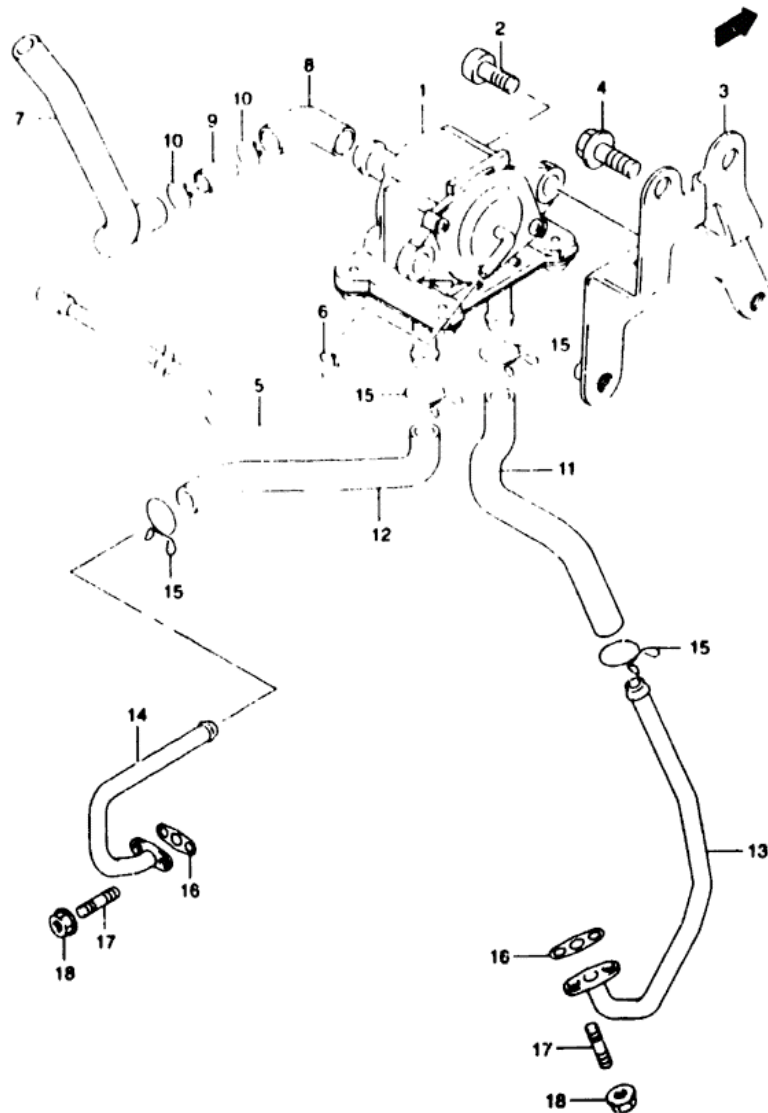


FIG 18 ( D-8)

2ND AIR VALVE

REF.NO.	PART NO.	DESCRIPTION	Q'TY	REMARKS
1	18450-20F00	VALVE ASSY. 2ND AIR	1	
2	07130-06163	BOLT, 2ND AIR VALVE	2	
3	18610-20F00	BRACKET, 2ND AIR VALVE	1	
4	C2162-06163	BOLT, 2ND AIR BRACKET	1	
5	09359-40701-600	HOSE, 2ND AIR VACUUM	1	L 600 ±270
6	09401-06101	CLIP	1	
7	18711-20F00	HOSE, 2ND AIR CLEANER	1	
8	18712-21F00	HOSE, 2ND AIR CLEANER JOINT	1	
9	13888-19B00	JOINT, 2ND AIR CLEANER HOSE	1	
10	09401-15101	CLIP	4	
11	18461-20F00	HOSE, 2ND AIR VALVE FRONT	1	
12	18471-20F00	HOSE, 2ND AIR VALVE REAR	1	
13	18410-20F00	PIPE, 2ND AIR FRONT	1	
14	18420-20F00	PIPE, 2ND AIR REAR	1	
15	09401-13409	CLIP	4	
16	18441-45C00	GASKET, 2ND AIR PIPE	2	
17	01421-06163	BOLT, STUD	4	
18	08316-10063	NUT	4	

21 SV650 Y E3/E33

D8

AIR CLEANER..... C-08    CRANKCASE COVER.... B-07    FRONT BRAKE HOSE... I-07    GEAR SHIFTING..... D-12    OPTIONAL..... J-07    REAR WHEEL..... J-04    TRANSMISSION..... D-10  
 BATTERY..... E-04    CRANKCASE..... B-05    FRONT CALIPER..... I-04    MAIN SHAFT..... H-02    RADIATOR HOSE..... D-07    SEAT TAIL COVER.... H-11    TURN SIGNAL LAMP.... F-04

FIG.19

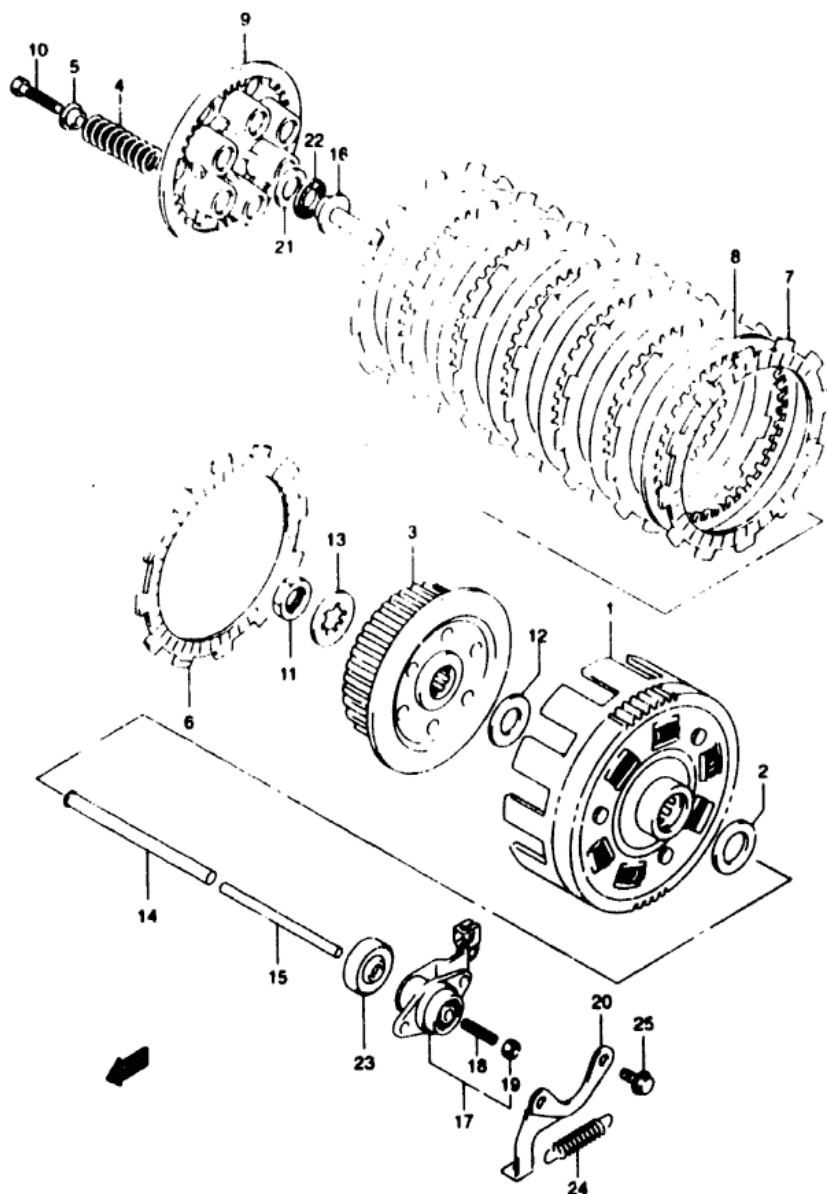


FIG 19 ( D-9)

## CLUTCH

REF.NO.	PART NO.	DESCRIPTION	Q'TY	REMARKS
1-1	21200-20810	GEAR ASSY. PRIMARY DRIVEN	1	-E NO P503-106336
1-2	21200-20811	GEAR ASSY. PRIMARY DRIVEN	1	E NO P503-106337-
2	09160-20067	WASHER (20X36X3)	1	
3	21411-44101	HUB CLUTCH SLEEVE	1	
4	21413-20F00	SPRING, CLUTCH	5	
5	21414-01D00	SPACER, CLUTCH SLEEVE HUB	6	
6	21440-19F00	PLATE CLUTCH DRIVE	1	
7	21441-37440	PLATE CLUTCH DRIVE	6	
8	21451-28C31	PLATE CLUTCH DRIVE (T 1 6)	6	
9	21462-14301	DISC CLUTCH PRESSURE	1	
10	09100-06145	BOLT (6X40)	6	
11	09140-20001	NUT	1	
12	09160-20067	WASHER (20X36X3)	1	
13	09167-20006	LOCK WASHER	1	
14	23110-44111	ROD, PUSH RM	1	
15	23111-27A01	ROD, CLUTCH PUSH LH	1	
16	23121-44100	PIECE CLUTCH PUSH	1	
17	23200-11D00	SCREW ASSY CLUTCH RELEASE	1	
18	09134-06010	SCREW	1	
19	08210-00067	NUT	1	
20	23226-19F00	SUPPORT, CLUTCH RELEASE	1	
21	09160-15045	WASHER (15.5X28X1)	1	
22	09263-15003	BEARING (15X28X2)	1	
23	09285-06015	OIL SEAL (6X34X5.5)	1	
24	09443-08001	SPRING	1	
25	01500-06163	BOLT	2	

22 SV650 Y E3/E33

D9

FIG.20

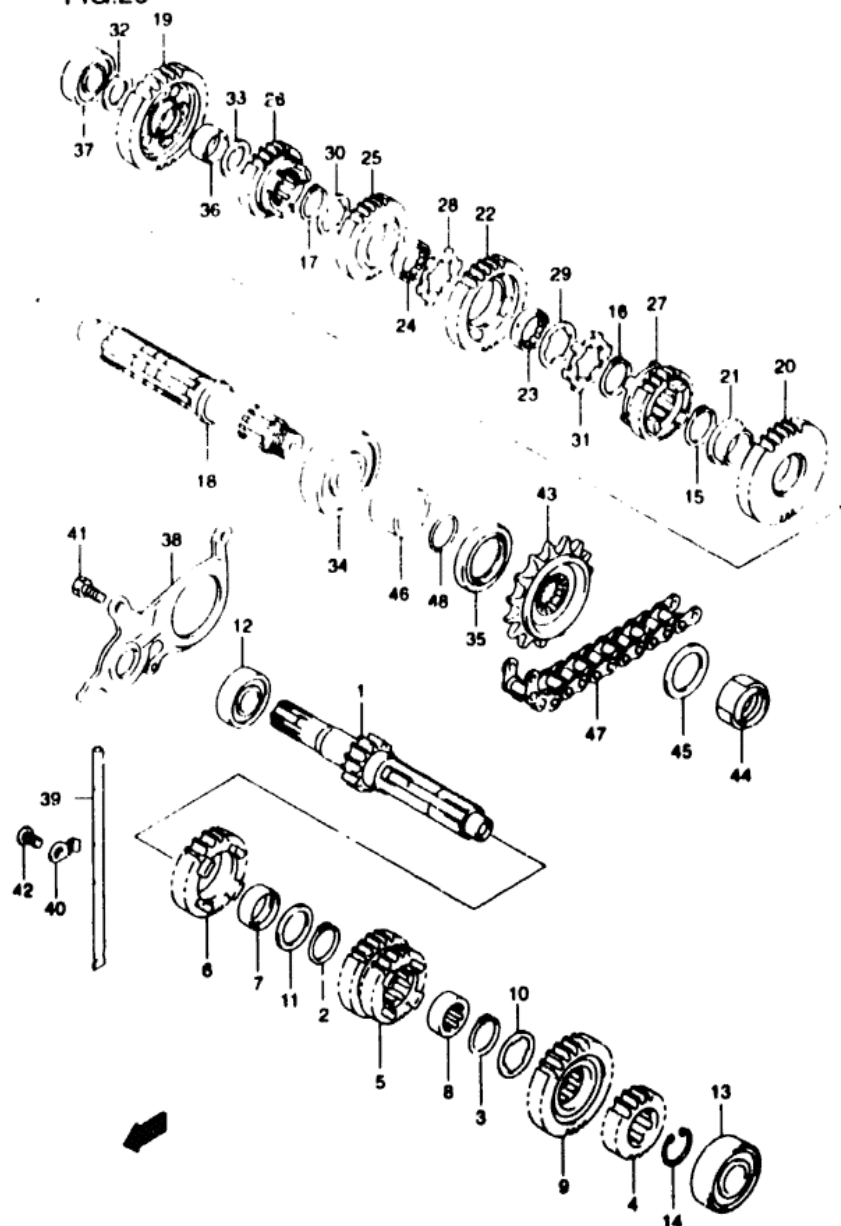


FIG 20 ( D-10)

## TRANSMISSION

REF.NO.	PART NO.	DESCRIPTION	Q'TY	REMARKS
1	24120-19F00	SHAFT, COUNTER (NT 13)	1	
2	24127-19F00	CIRCLIP, 5TH DRIVE GEAR	1	
3	24127-19F00	CIRCLIP, 6TH DRIVE GEAR	1	
4	24221-20F00	GEAR, 2ND DRIVE (NT 18)	1	
5	24231-20F00	GEAR, 3RD & 4TH DRIVE (NT 21/24)	1	
6	24251-20F01	GEAR, 5TH DRIVE (NT 26)	1	
7	24252-19F00	BUSH, 5TH DRIVE	1	
8	24252-38A10	BUSH, 6TH DRIVE	1	
9	24261-20F00	GEAR, 6TH DRIVE (NT 27)	1	
10	09167-25021	WASHER, 6TH DRIVE	1	25.1x33x1.0
11	09181-25167	WASHER, 5TH DRIVE	1	
12	09262-17046	BEARING, CNTR SHAFT LH	1	17x40x12
13	09262-20116	BEARING, CNTR SHAFT RH	1	20x52x15
14	09380-25012	RING, 2ND DRIVE	1	
15	24127-19F00	CIRCLIP, 2ND DRIVEN	1	
16	24127-19F00	CIRCLIP, 3RD DRIVEN	1	
17	24127-19F00	CIRCLIP, 4TH DRIVEN	1	
18	24130-19F01	SHAFT, DRIVE	1	
19	24311-20F00	GEAR, 1ST DRIVEN (NT 32)	1	
20	24321-20F00	GEAR, 2ND DRIVEN (NT 32)	1	
21	24322-19F00	BUSH, 2ND DRIVEN	1	
22	24331-20F00	GEAR, 3RD DRIVEN (NT 29)	1	
23	24332-24510	BUSH, 3RD DRIVEN	1	
24	24332-24510	BUSH, 4TH DRIVEN	1	
25	24341-20F00	GEAR, 4TH DRIVEN (NT 27)	1	
26	24351-20F01	GEAR, 5TH DRIVEN (NT 25)	1	
27	24361-20F00	GEAR, 6TH DRIVEN (NT 23)	1	
28	09167-25013	LOCK WASHER, 3RD DRIVEN	1	
29	09167-25021	WASHER, 3RD DRIVEN	1	
30	09167-25021	WASHER, 4TH DRIVEN	1	
31	09169-25001	WASHER, 3RD DRIVEN LOCK	1	
32	09181-17195	WASHER, 1ST DRIVEN	1	17x29x1.0
33	09181-20195	WASHER, 1ST DRIVEN	1	20x30x1.0

23 SV650 Y E3/E33

D 10

FIG 20 ( D-11)

## TRANSMISSION

REF. NO.	PART NO.	DESCRIPTION	Q'TY	REMARKS
34	09262-25125	BEARING, DRIVE SHAFT LH	1	25X62X17
35	09283-36003	SEAL, DRIVE SHAFT	1	36X50X6
36	09300-20032	BUSH, 1ST DRIVEN	1	
37	09262-17023	BEARING, DRIVE SHAFT RH	1	17X40X12
38	24751-19F00	RETAINER, DRIVE SHAFT OIL SEAL	1	
39	24881-12C20	GUIDE, TM OIL	1	
40	24885-12C10	RETAINER, TRANSMISSION OIL	1	
41	01500-06123	BOLT	3	
42	02112-06123	SCREW	1	
43	27510-20F00	SPROCKET, ENGINE (NT 15)	1	
44	09159-20004	NUT, ENGINE SPROCKET	1	
45	09167-25019	WASHER, ENGINE SPROCKET	1	
46	27521-10F00	SPACER, ENGINE SPROCKET	1	
47-1	27600-32C10-110	CHAIN ASSY (DID525/9-110LE)	1	SV650X
47-2	27600-32C10-108	CHAIN ASSY (DID529/9-108LE)	1	SV650SX E2R
48	09280-24010	O RING (D 24 ID 23.7)	1	

24 SV650 Y E3/E33

D 11

AIR CLEANER.....	C-02	CRANKCASE COVER.....	B-07	FRONT BRAKE HOSE.....	I-07	GEAR SHIFTING.....	D-12	OPTIONAL.....	J-07	WEAR WHEEL.....	J-04	TRANSMISSION.....	D-10
BATTERY.....	E-04	CRANKCASE.....	B-05	FRONT CALIPER.....	I-06	HANDLE BAR.....	H-02	RADIATOR HOSE.....	D-07	SEAT TAIL COVER.....	H-11	TURNSIGNAL LAMP.....	F-06
CARB CHAIN.....	C-04	CRANKSHAFT.....	B-08	FRONT CYLINDER HEAD.....	B-02	HANDLE LEVER.....	H-04	RADIATOR.....	D-06	SEAT.....	H-10	WARNING LABEL.....	H-09
CLUTCH LEVER.....	C-03	CRANKCASE COVER.....	B-07	FRONT CYLINDER HEAD.....	B-02	HANDLE LEVER.....	H-04	RADIATOR.....	D-06	SEAT.....	H-10	WARNING LABEL.....	H-09



FIG.21

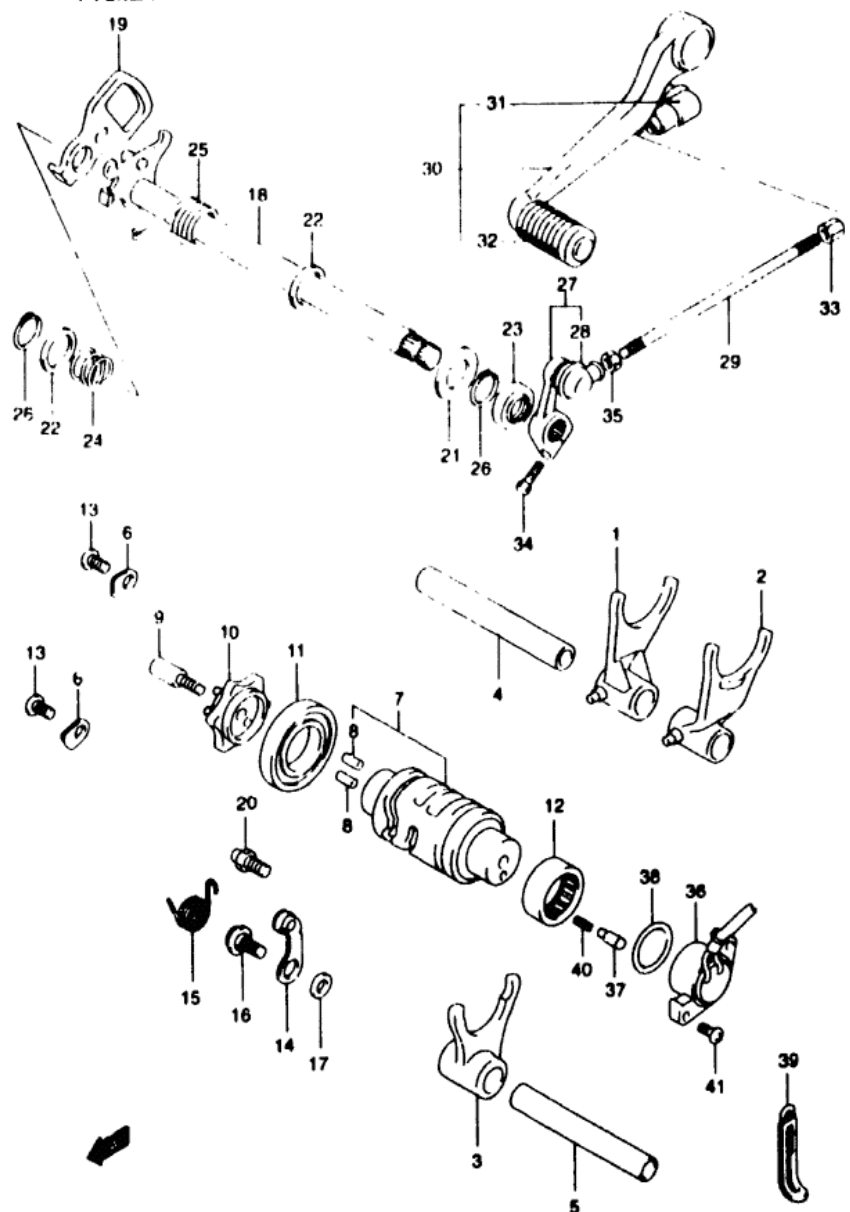


FIG 21 ( D-12)

## GEAR SHIFTING

REF.NO.	PART NO.	DESCRIPTION	Q'TY	REMARKS
1	25211-42E10	FORK, GEAR SHIFT NO 1	1	
2	25221-42E10	FORK, GEAR SHIFT NO 2	2	
3	25231-42E10	FORK, GEAR SHIFT NO 3	1	
4	25411-26D01	SHAFT, GEAR SHIFT FORK NO 1	1	
5	25411-44B00	SHAFT, GEAR SHIFT FORK NO 2	1	
6	24741-21A00	RETAINER, SHIFT CAM BEARING	2	
7	25310-19F00	CAM, GEAR SHIFT	1	
8	04221-04089	KNOCK PIN	2	
9	25312-12C00	PIN, SHIFT CAM DRIVEN GEAR	1	
10	25381-19F00	PLATE, GEAR SHIFT CAM	1	
11	09262-25006	BEARING (25X47X8)	1	
12	09263-25018	BEARING (25X32X12)	1	
13	02112-06123	SCREW	2	
14	25350-24B00	STOPPER, GEAR SHIFT CAM	1	
15	25355-20F00	SPRING, STOPPER ARM	1	
16	09111-06041	BOLT (6X14.3)	1	
17	08211-06141	WASHER	1	
18	25510-19F00	SHAFT, GEAR SHIFT	1	
19	25512-13E11	PLATE, GEAR SHIFT CAM DRIVE	1	
20	25671-01000	STOPPER, RETURN SPRING	1	
21	09160-14016	WASHER (14X29X0.8)	1	
22	09181-14167	SHIM	2	
23	09283-14006	OIL SEAL (14X22X6)	1	
24	09440-17009	SPRING	1	
25	09444-20001	SPRING	1	
26	08J31-31146	CIRCLIP	1	
27	25520-29B00	ARM, GEAR SHIFT LINK	1	
28	25526-47000	COVER, DUST	1	
29-1	25525-19F00	ROD, GEAR SHIFT (L 150)	1	SV650X
29-2	25525-05A10	ROD, GEAR SHIFT (L 175)	1	SV650SX E28
30	25600-33E00	LEVER ASSY, GEAR SHIFT	1	
31	25526-47000	COVER, DUST	1	
32	25652-20C00	RUBBER, GEAR SHIFT PEDAL	1	

25 SV650 Y E3/E33

D12

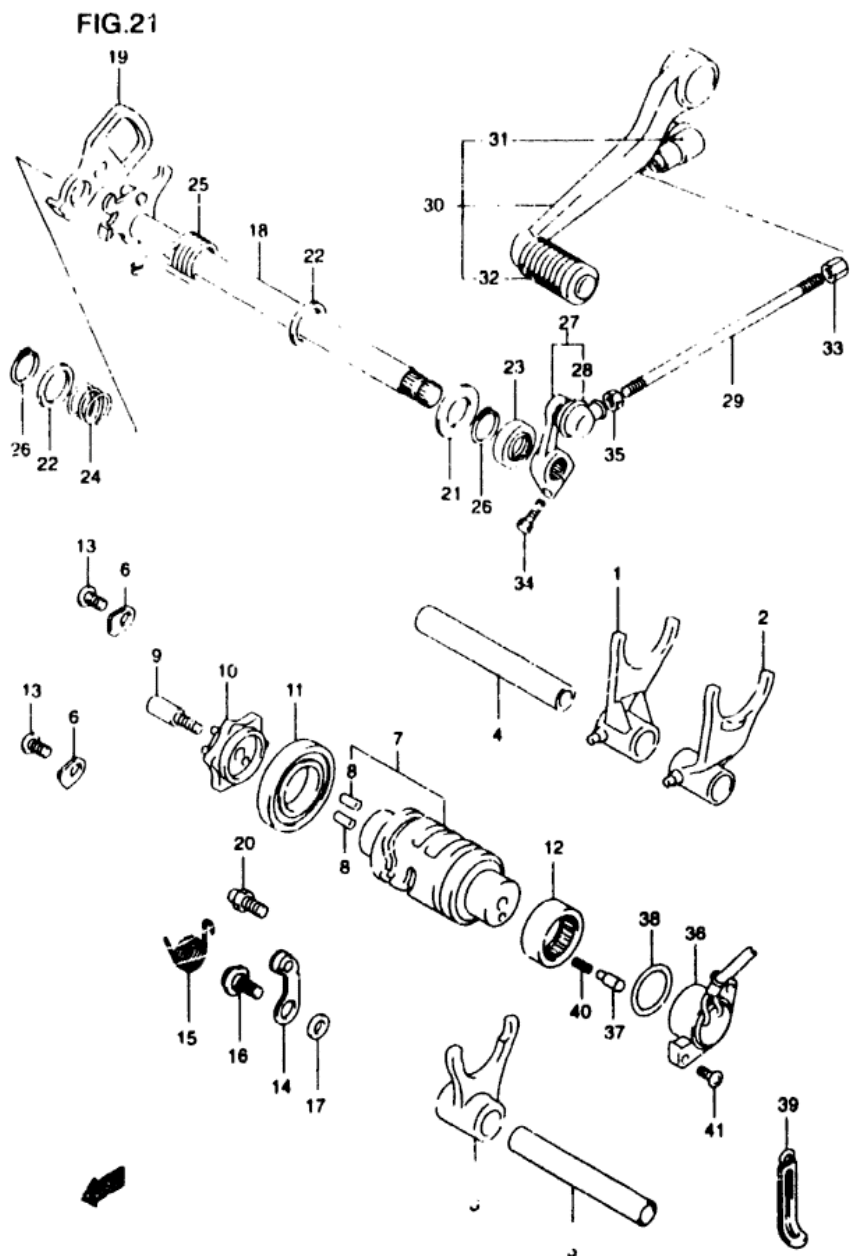


FIG 21 ( D-13) GEAR SHIFTING

REF.NO.	PART NO.	DESCRIPTION	Q'TY	REMARKS
33	09140-06011	NUT	1	
34	01500-06203	BOLT	1	
35	08310-00067	NUT	1	
36	37720-20F00	BASE ASSY. GEAR SHIFT TERMINAL	1	
37	09204-05011	CONTACT	2	
38	09204-26007	O RING (1.0 2 4 ID 25 7)	1	
39	09404-08206	CLAMP (L 82)	1	
40	03440-04010	SPRING	2	
41	02112-05163	SCREW	2	

26 SVC50 Y E3/E33

D 13

FIG.22

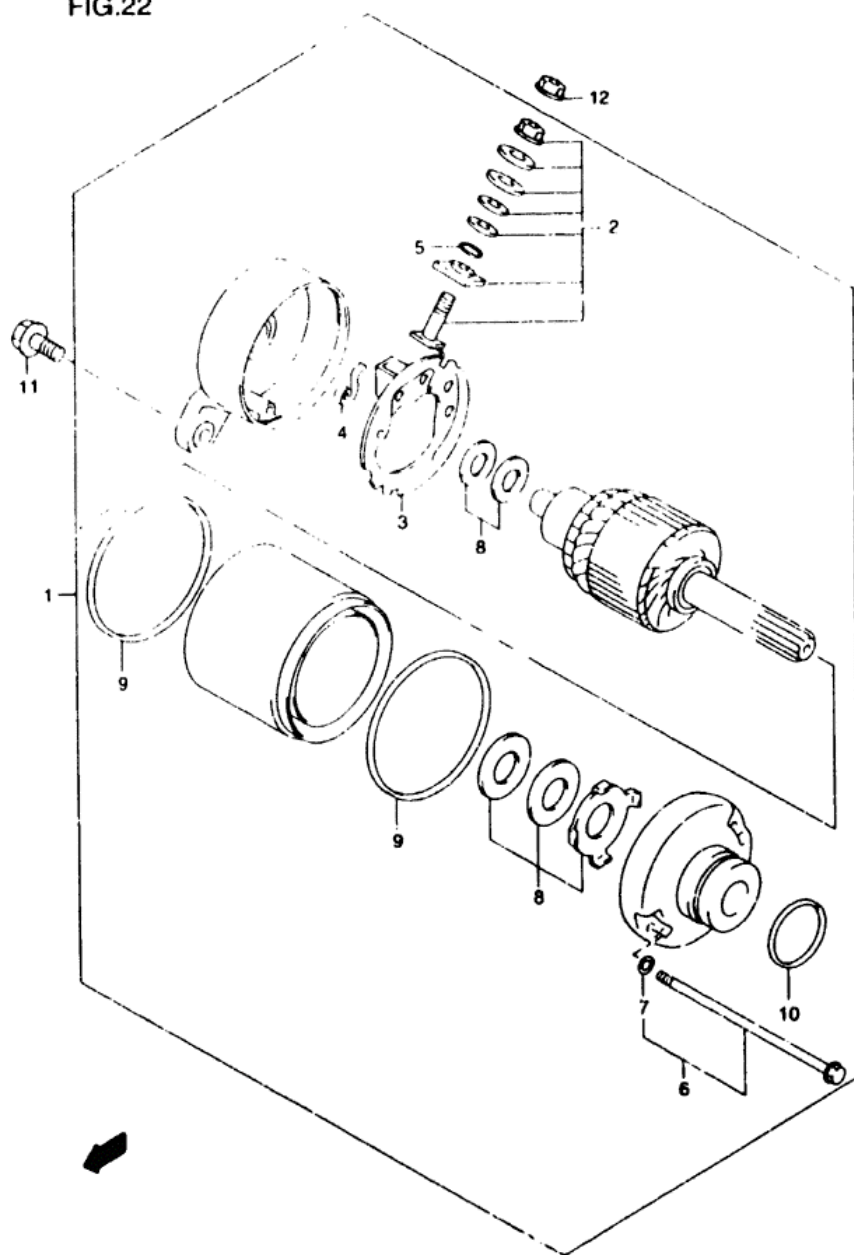


FIG 22 ( E-2)

## STARTING MOTOR

REF.NO.	PART NO.	DESCRIPTION	Q'TY	REMARKS
1	31100-19F00	MOTOR ASSY STARTING	1	
2	31130-13E00	BRUSH TERMINAL SET	1	
3	31132-33E00	BRUSH HOLDER SET	1	
4	31135-31300	SPRING BRUSH	2	
5	31143-49040	O RING	1	
6	31280-19F00	SET BOLT ASSY	2	
7	31156-13E00	O RING	2	
8	31170-19B10	WASHER SET	1	
9	31264-13E00	O RING	2	
10	09280-25002	O RING (D 31 ID 24.4)	1	
11	01547-06253	BOLT	2	
12	08361-35068	NUT	1	

27 SV650 Y E2/E33

E2



FIG.23

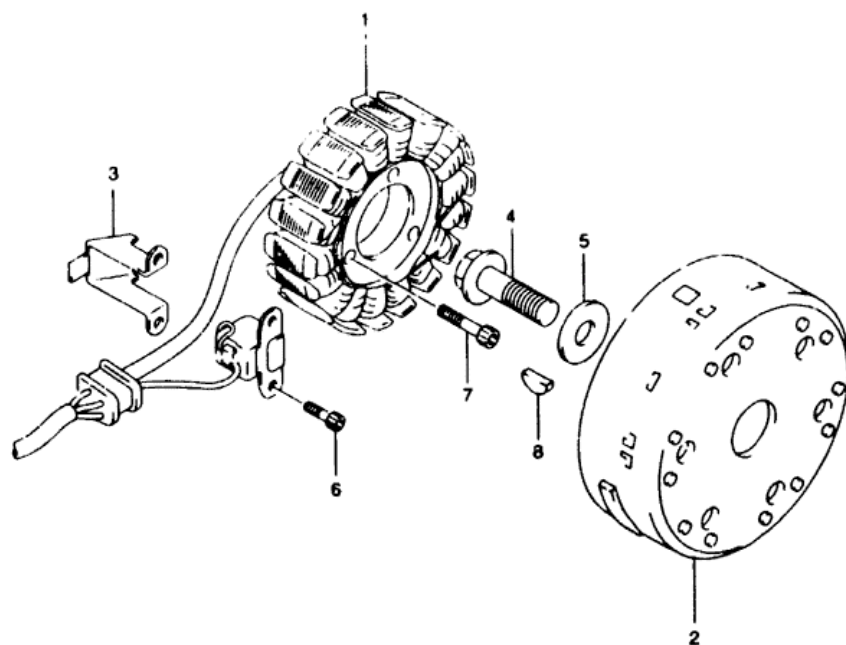


FIG 23 ( E-3) MAGNETO

REF.NO.	PART NO.	DESCRIPTION	Q'TY	REMARKS
1	32101-19F00	STATOR ASSY	1	
2	32102-20F00	ROTOR ASSY	1	
3	32371-19F00	CLAMP MAGNETO LEAD	1	
4	0S103-12004	BOLT (12X40)	1	
5	09160-12036	WASHER (12X30X3)	1	
6	07130-05123	BOLT	2	
7	07130-06303	BOLT	3	
8	09420-04008	KEY	1	

28 SV650 Y E3/E33

E3

AIR CLEANER..... C-08	CRANKCASE COVER.... B-07	FRONT BRAKE HOSE... I-07	GLAR SHIFTING..... D-12	OPTIONAL..... J-07	REAR WHEEL..... J-04	TRANSMISSION..... D-10
BATTERY..... E-04	CRANKCASE..... B-05	FRONT CALIPER..... I-06	HANDLE BAR..... H-02	RADIATOR HOSE..... D-07	SEAT TAIL COVER.... H-11	TURNSIGNAL LAMP.... F-06
CAN CHAIN..... C-04	CRANKSHAFT..... B-08	FRONT CYLINDER HEAD B-02	HANDLE LEVER..... H-04	RADIATOR..... D-06	SEAT..... H-10	WARNING LABEL..... H-09
CAN SHAFT / VALVE.. C-03	CYLINDER..... B-04	FRONT FENDER..... C-11	MAIN F. SWITCH..... F-11	REAR CALIPER..... J-05	SPEEDOMETER..... F-02	WATER PUMP..... D-04

FIG.24

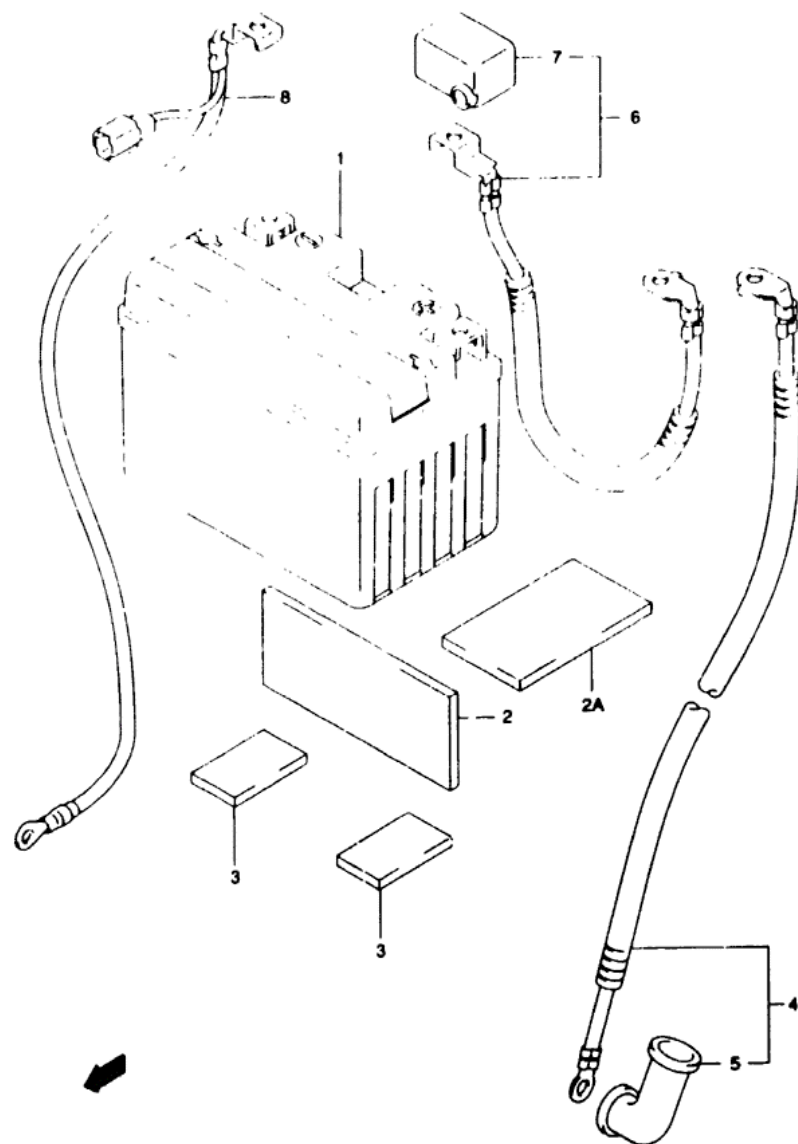


FIG 24 ( E-4)

BATTERY

REF. NO.	PART NO.	DESCRIPTION	Q'TY	REMARKS
1	33610-02F00	BATTERY ASSY (YT12A-BS 12V 10AH)	1	
2	33651-37000	PROTECTOR (170X95X30)	3	CUT AS REQUIRED PROFILE (115X50)
2A	33652-19F00	PROTECTOR (40X85X5)	1	
3	33652-28000	PROTECTOR BATTERY (20X45X5)	2	
4	33810-19F00	WIRE STARTER MOTOR LEAD	1	
5	31861-48B10	CAP STARTER MOTOR LEAD	1	
6	33820-19F00	WIRE BATTERY (+) LEAD	1	
7	33624-16E00	CAP BATTERY (+)	1	
8	34250-19F00	WIRE BATTERY (-) LEAD	1	

29 SV650 Y E3/E33

E4

AIR CLEANER..... C-08    CRANKCASE COVER.... B-07    FRONT BRAKE HOSE... I-07    REAR SHIFTING..... D-12    OPTIONAL..... J-07    REAR WHEEL..... J-04    TRANSMISSION..... D-10

FIG.25

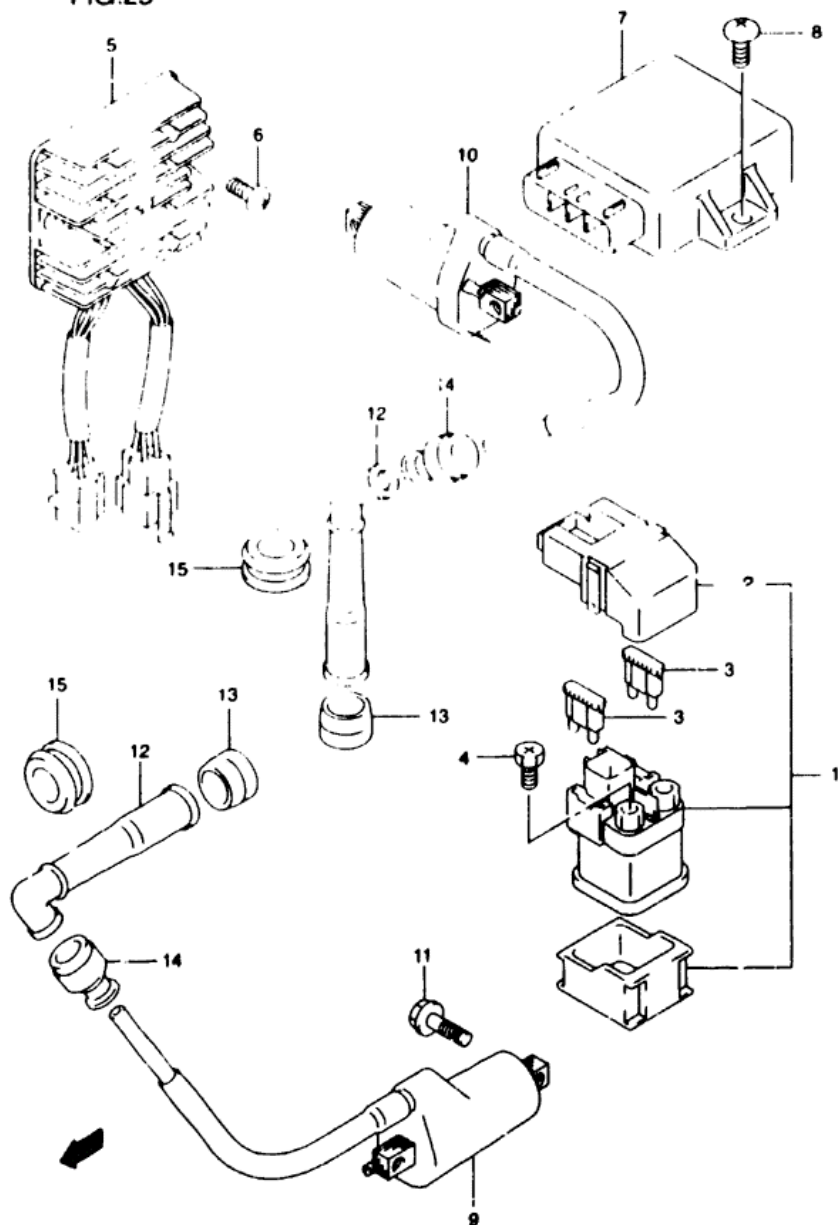


FIG 25 ( E-5)

## ELECTRICAL

REF.NO.	PART NO.	DESCRIPTION	Q'TY	REMARKS
1	31800-21E20	RELAY ASSY. STARTING MOTOR	1	
2	31861-21E20	COVER, RELAY ASSY	1	
3	09481-30101	FUSE (30A)	2	
4	09128-06013	SCREW (6X8)	2	
5	32800-24B01	RECTIFIER ASSY	1	
6	02162-06163	BOLT	2	
7	32900-20F10	IGNITER ASSY	1	
8	03542-06163	SCREW	2	
9	33410-19F00	COIL ASSY. IGNITION	1	
10	33420-19F00	COIL ASSY. IGNITION	1	
11	01500-06203	BOLT	4	
12	33510-11D00	CAP. SPARK PLUG	2	
13	33541-23E01	SEAL SPARK PLUG CAP	2	
14	33542-38B00	SEAL HIGH TENSION CORD	1	
15	33543-19F00	COVER SPARK PLUG CAP	2	

30 SV650 Y E3/E33

E5

AIR CLEANER.....	C-08	CRANKCASE COVER.....	B-07	FRONT BRAKE HOSE....	I-07	GEAR SHIFTING.....	D-12	OPTIONAL.....	J-07	REAR WHEEL.....	J-04	TRANSMISSION.....	D-10
BATTERY.....	E-04	CRANKCASE.....	B-05	FRONT CALIPER.....	I-06	HANDLE BAR.....	H-02	RADIATOR HOSE.....	D-07	SEAT TAIL COVER.....	H-11	TURN SIGNAL LAMP.....	F-06
CAN CHAIN.....	C-04	CRANKSHAFT.....	B-08	FRONT CYLINDER HEAD	B-02	HANDLE LEVER.....	H-04	RADIATOR.....	J-06	SEAT.....	H-10	WARNING LABEL.....	H-09
CAN SHAFT / VALVE..	C-03	CYLINDER.....	B-04	FRONT FENDER.....	C-11	MAIN F. SWITCH.....	F-11	REAR CALIPER.....	J-05	SPEEDMETER.....	F-02	WATER PUMP.....	D-04

FIG.26

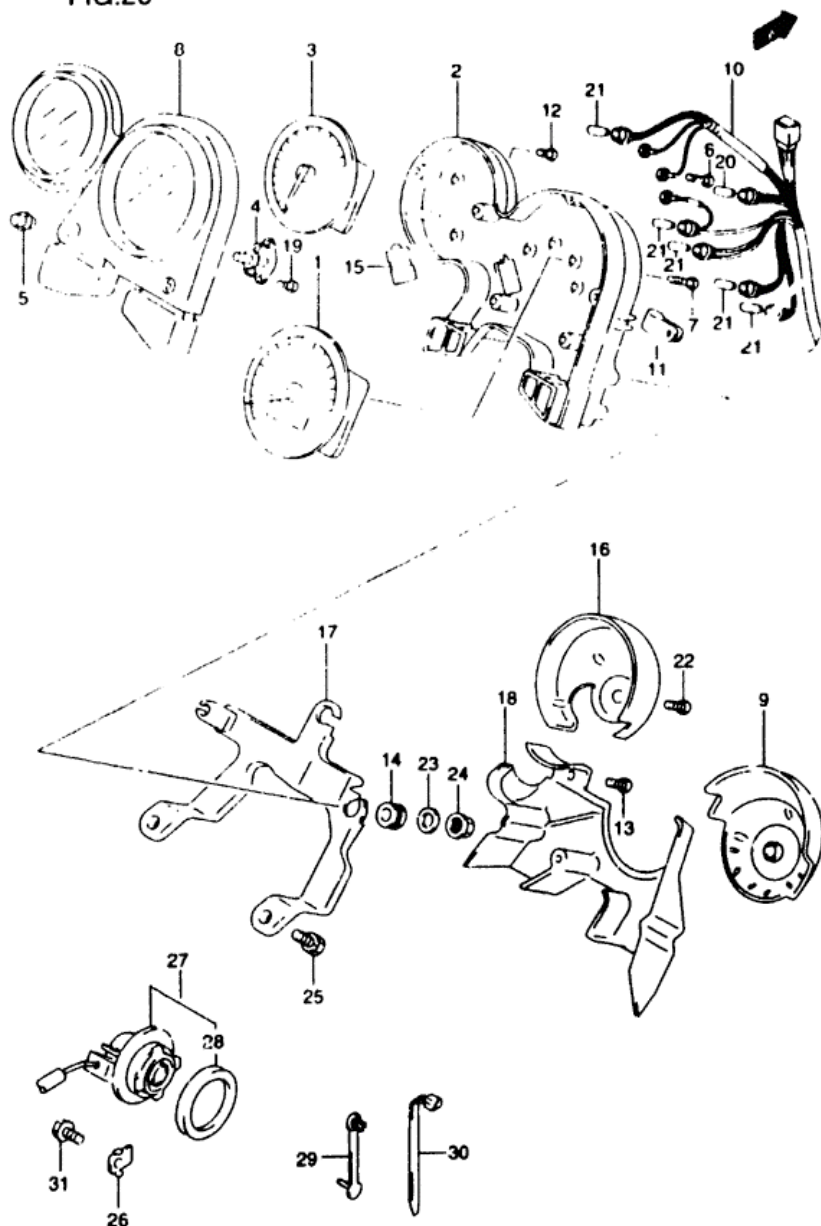


FIG 26 ( F-2)

SPEEDOMETER (SV650X/Y)

REF.NO.	PART NO.	DESCRIPTION	Q'TY	REMARKS
1	34110-20F10	SPEEDOMETER (MILF)	1	
2	34111-19F20	LOWER CASE	1	
3	34210-20F00	TACHOMETER	1	
4	34123-33E00	ATTACHMENT SWITCH	1	
5	34124-33E00	SWITCH GUM	1	
6	34147-19F20	SCREW PAN HEAD (3x18)	3	
7	34149-19F20	SCREW PAN HEAD (3x20)	4	
8	34150-19F20	UPPER CASE	1	
9	34152-19F20	ORNAMENT SPEEDOMETER	1	
10	34173-19F20	CORD ASS.	1	
11	34176-19F20	CLAMP	1	
12	34183-09F00	SCREW (3x12)	2	
13	34183-19F20	SCREW HEAD TAPPING 4x12	4	
14	34189-19F20	DAMPER	1	
15	34198-19F20	GROMMET	1	
16	34211-19F20	ORNAMENT TACHOMETER	1	
17	34950-19F20	BRACKET	1	
18	36383-19F20	COVER	1	
19	09132-03005	SCREW (3x10)	2	
20	09471-12077	BULB (12V 17W T10)	1	
21	09471-12108	BULB (12V 17W T6.5)	5	
22	03541-04163	SCREW	2	
23	09160-06056	WASHER (6.5x18x1)	3	
24	08310-00067	NUT	3	
25	01550-08163	BOLT	2	
26	34938-14F00	GUIDE, SENSOR LEAD	2	
27	34990-21E00	SENSOR, SPEED	1	
28	286-44001	SEAL, SENSOR OIL	1	
29	09407-03401	CLAMP	1	
30	09407-14407	CLAMP (L 145)	3	
31	01550-06123	BOLT	2	

REFER TO FIG.26A(F-3) FOR SV650S/SY E28

31 SV650 Y E28/E33

F2

AIR CLEANER.....	C-08	CRANKCASE COVER....	B-07	FRONT BRAKE HOSE....	I-07	GEAR SHIFTING.....	D-12	OPTIONAL.....	J-07	REAR WHEEL.....	J-04	TRANSMISSION.....	D-10
BATTERY.....	E-04	CRANKCASE.....	D-05	FRONT CALIPER.....	I-06	HANDLE BAR.....	H-02	RADIATOR HOSE.....	D-07	SEAT TAIL COVER....	H-11	TURNSIGNAL LAMP....	F-06
CAM CHAIN.....	C-04	CRANKSHAFT.....	B-08	FRONT CYLINDER HEAD	B-02	HANDLE LEVER.....	H-04	RADIATOR.....	D-06	SEAT.....	H-10	WARNING LABEL.....	H-09
CAM SHAFT / VALVE	C-03	CYLINDER.....	B-04	FRONT FENDER.....	C-11	HANDLE SWITCH.....	E-11	REAR CALIPER.....	J-05	SPEEDOMETER.....	F-02	WATER PUMP.....	D-04

FIG.26A

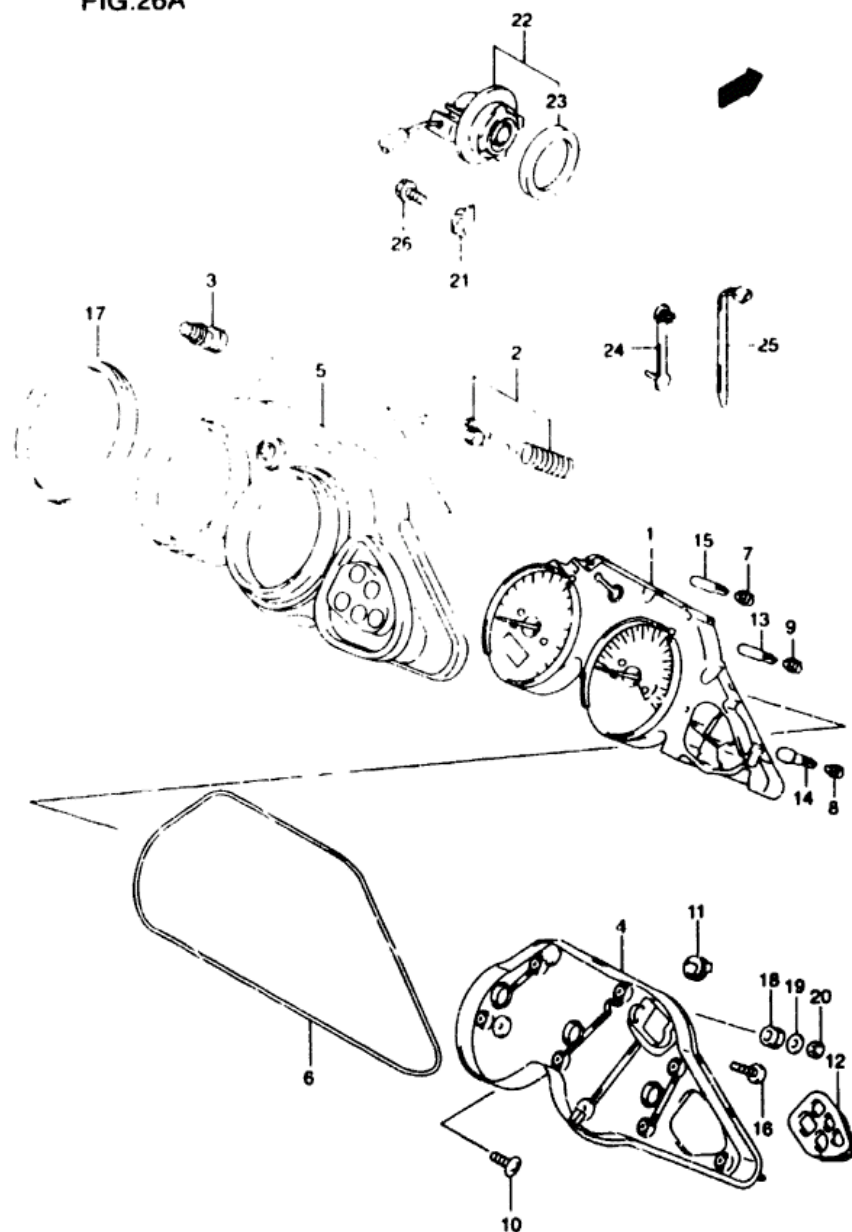


FIG 26A( F-3) SPEEDOMETER (SV650SX/SY E28)

REF.NO.	PART NO.	DESCRIPTION	Q'TY	REMARKS
1-1	34119-20F30	SPEEDOMETER	1	MODEL X
1-2	34119-20F31	SPEEDOMETER	1	MODEL Y
2	34123-02F06	LEVER	1	
3	34124-02F00	SWITCH GUM	1	
4	34130-02F00	CASE ASSY	1	
5	34150-19F00	VISOR	1	
6	34153-02F00	GASKET	1	
7	34172-71E70	SOCKET	3	
8	34173-19D00	SOCKET	3	
9	34173-19D70	SOCKET	2	
10	34183-33D00	SCREW SPEEDOMETER (4x14)	2	
11	34198-02F00	BLIND CAP	3	
12	34198-02F10	BLIND	1	
13	09471-12085	BULB (14 / 17W)	2	
14	09471-12100	BULB (12 / 17W)	1	
15	09471-12189	BULB (14 / 18W)	3	
16	03211-04207	SCREW	6	
17	34188-02F00	CUSHION	2	
18	34996-43410	CUSHION	4	
19	09160-05037	WASHER (5.5x10x1.20)	4	
20	08310-00053	NUT	4	
21	34938-14F00	GUIDE FOR LEAD	1	
22	34990-21E00	SENSOR SPEED	1	
23	09286-44001	SEAL SENSOR	1	
24	09407-03401	CLAMP	1	
25	09407-14407	CLAMP (L 145)	3	
26	01550-06123	BOLT	2	

32 SV650 / E3/E33

F3

AIR CLEANER.....	C-08	CRANKCASE COVER....	B-07	FRONT BRAKE HOSE....	I-07	REAR SHIFTING.....	D-12	OPTIONAL.....	J-07	REAR WHEEL.....	J-04	TRANSMISSION.....	D-10
BATTERY.....	E-04	CRANKCASE.....	B-05	FRONT CALIPER.....	I-06	HANDLE BAR.....	H-02	RADIATOR NOS.....	D-07	SEAT TAIL COVER....	H-11	TURN SIGNAL LAMP....	F-06
CAR CHAIN.....	C-04	CRANKSHAFT.....	B-08	FRONT CYLINDER HEAD	B-02	HANDLE LEVER.....	H-04	RADIATOR.....	D-06	SEAT.....	H-10	WARNING LABEL.....	H-09
CAM SHAFT / VALVE	C-03	CYLINDER.....	B-06	FRONT FENDER.....	E-11	STARTER BUTTON.....	E-11	REAR CALIPER.....	J-05	SPEEDOMETER.....	F-02	WATER PUMP.....	D-04

FIG.27

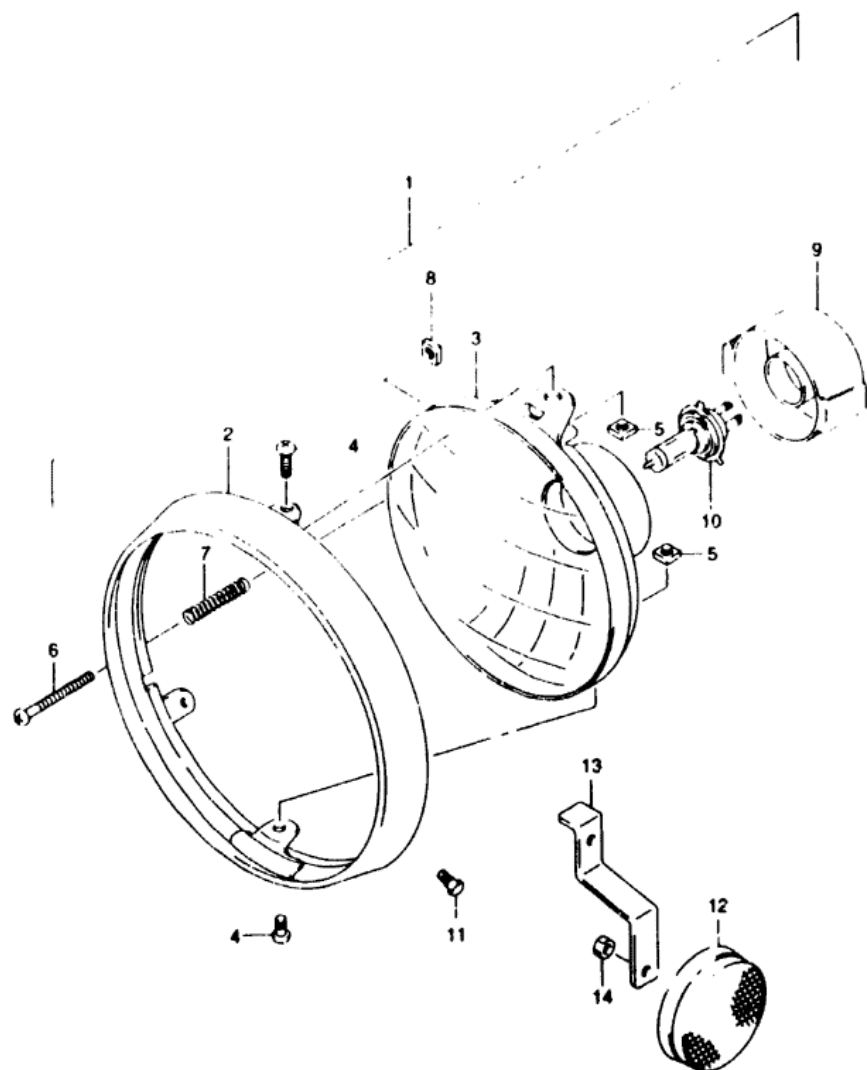


FIG 27 ( F-4)

HEADLAMP (SV650X/Y)

REF.NO.	PART NO.	DESCRIPTION	Q'TY	REMARKS
1	35100-19F00-999	HEADLAMP ASSY	1	
2	35111-19F00	RIM	1	
3	35121-19F00	LAMP UNIT	1	
4	35181-19F00	SCREW (5X16)	2	
5	35135-45900	NUT	2	
6	35151-19F00	SCREW ADJUSTING	1	
	35154-13F00	SPRING	1	
8	35152-45600	NUT	1	
9	35174-19F00	COVER SOCKET	1	
10	09471-12185	BULB (12V 60/55W)	1	
11	09139-05038	SCREW	2	
12	35950-14A00	REFLEX REFLECTOR ASSY	2	
13	35956-19F00	BRACKET FRONT SIDE RR	2	
14	0R310-00053	NUT	2	

REFER TO FIG 27A(F-5) FOR SV650SX/SY E28



FIG.27A

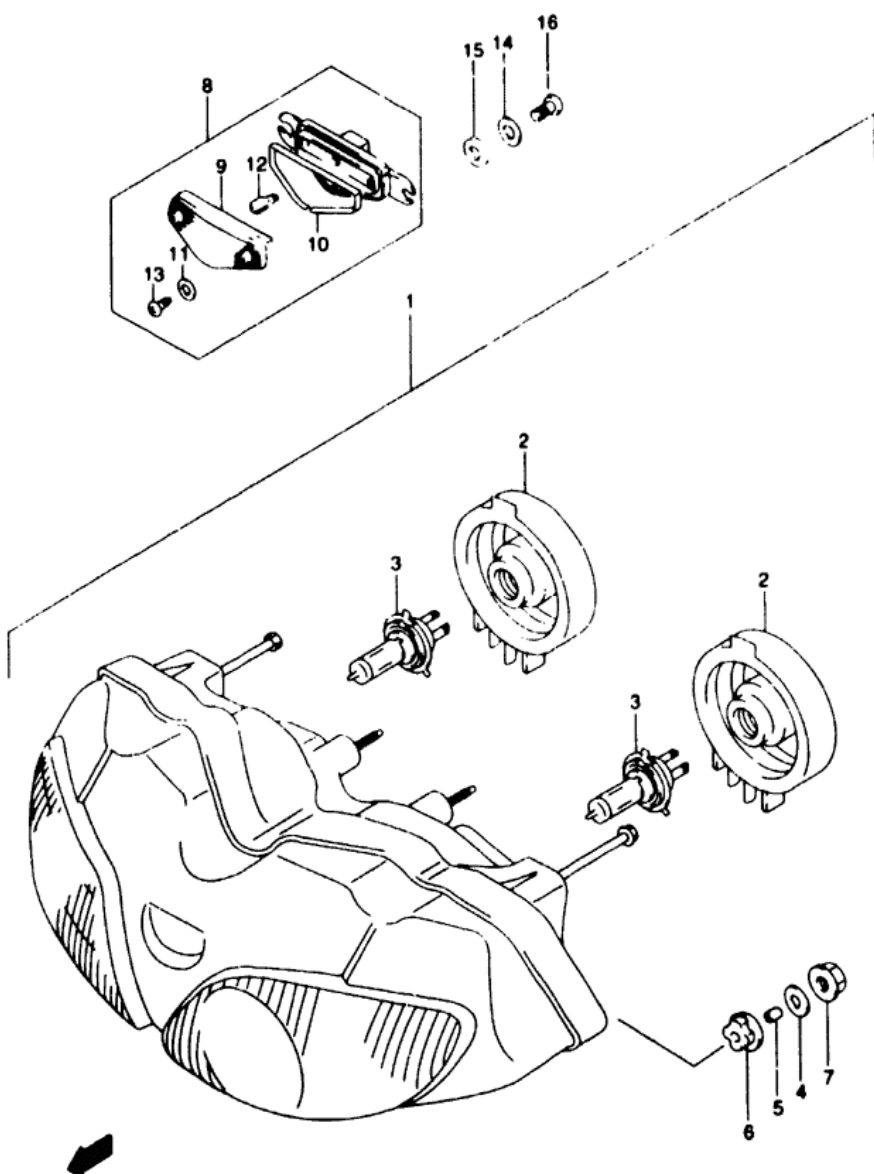


FIG 27A( F-5)

HEADLAMP (SV650SX/SY E28)

REF.NO.	PART NO.	DESCRIPTION	Q'TY	REMARKS
	35100-20F30-999	HEADLAMP ASSY	1	
2	35125-02F00	COVER, SOCKET	2	
3	09471-12102	BULB (12V,44S/45W)	2	
4	09160-06088	WASHER (6.5X20X1.6)	4	
5	09180-06267	SPACER (6.5X9X12.5)	4	
6	09320-09010	CUSHION	4	
7	08316-10063	NUT	4	
8	36110-20F00	LAMP ASSY FRONT POSITION	1	
9	36112-09F00	LENS	1	
10	36113-20F00	GASKET	1	
11-1	36117-08F00	WASHER	2	MODEL X
11-2	36128-37B00	WASHER	2	MODEL Y
12	09471-12081	BULB (12V,55W)	1	
13	03211-04123	SCREW	2	
14	09161-05045	WASHER (5.5X18X1.0)	2	
15	09320-08001	CUSHION	2	
16	03511-15103	SCREW	2	

34 SV650 Y E3/E33

F5

AIR CLEANER..... C-08	CRANKCASE COVER.... B-07	FRONT BRAKE HOSE... I-07	GEAR SHIFTING..... D-12	OPTIONAL..... J-07	REAR WHEEL..... J-04	TRANSMISSION..... D-10
BATTERY..... E-04	CRANKCASE..... B-05	FRONT CALIPER..... I-06	HANDLE BAR..... H-02	RADIATOR HOSE..... D-07	SEAT TAIL COVER.... H-11	TURN SIGNAL LAMP.... F-06
CAM CHAIN..... C-04	CRANKSHAFT..... B-08	FRONT CYLINDER HEAD B-02	HANDLE LEVER..... H-04	RADIATOR..... D-06	SEAT..... H-10	WARNING LABEL..... H-09
CAM SHAFT / VALVE C-03	CVT INTER..... B-04	FRONT FENDER..... C-11	MAPLE SWITCH..... E-11	REAR CALIPER..... J-05	SPEEDOMETER..... F-02	WATER PUMP..... D-04

FIG.28

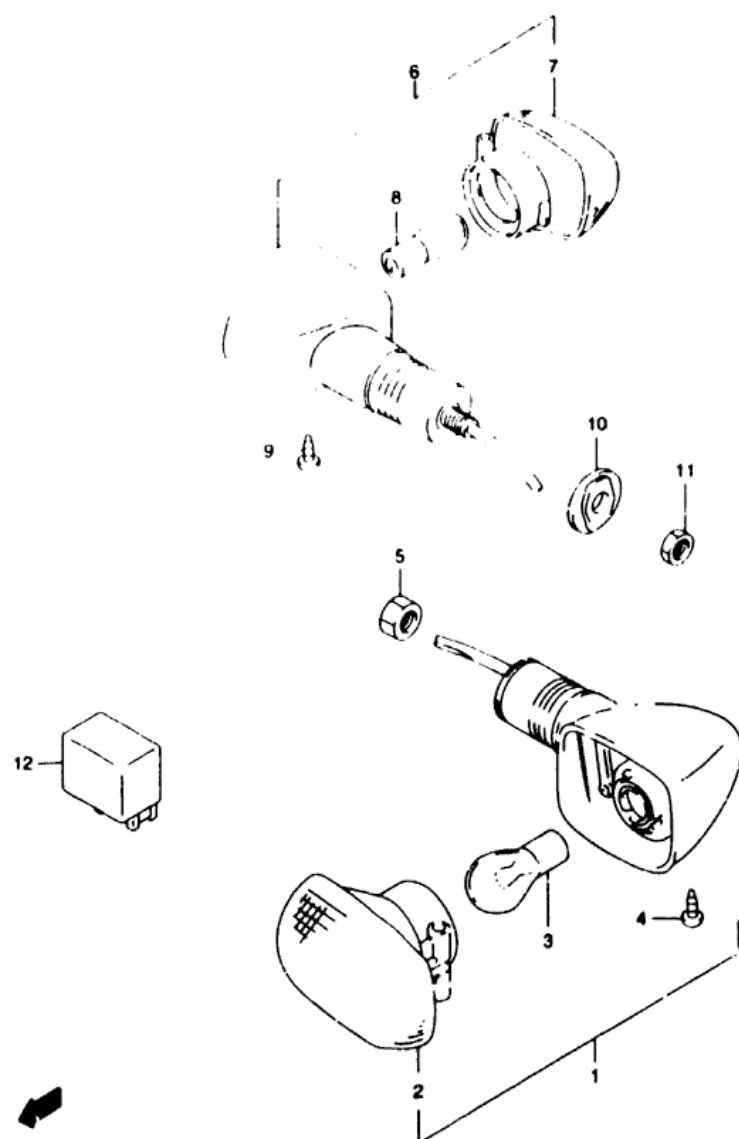


FIG 28 ( F-6)

TURNSIGNAL LAMP (SV650X/Y)

REF.NO.	PART NO.	DESCRIPTION	Q'TY	REMARKS
1-1	35601-20F30	LAMP ASSY. FRONT TURNSIGNAL RH	1	
1-2	35602-20F30	LAMP ASSY. FRONT TURNSIGNAL LH	1	
2	35610-33E00	LAMP UNIT	2	
3	09471-12045	BULB (12V 21W)	2	
4	03242-04123	SCREW	2	
5	08316-10103	NUT	2	
6-1	35603-33E10	LAMP ASSY. REAR TURNSIGNAL RH	1	
6-2	35604-33E10	LAMP ASSY. REAR TURNSIGNAL LH	1	
7	35610-33E00	LAMP UNIT	2	
8	09471-12045	BULB (12V 21W)	2	
9	03242-04123	SCREW	2	
10	35695-17C00	SPACER REAR TURNSIGNAL	2	
11	08310-00103	NUT	2	
12	38410-03F04	RELAY ASSY. TURNSIGNAL LAMP	1	

REFER TO FIG 28A(F-7) FOR SV650S X/SY E28

35 SV650 Y E3/E33

F6

AIR CLEANER.....	C-08	CRANKCASE COVER.....	B-07	FRONT BRAKE HOSE....	I-07	GEAR SHIFTING.....	D-12	OPTIONAL.....	J-07	REAR WHEEL.....	J-04	TRANSMISSION.....	D-10
BATTERY.....	E-04	CRANKCASE.....	B-05	FRONT CALIPER.....	I-06	HANDLE BAR.....	H-02	RADIATOR HOSE.....	D-07	SEAT TAIL COVER....	H-11	TURNSIGNAL LAMP....	F-06
CAM CHAIN.....	C-04	CRANKSHAFT.....	B-08	FRONT CYLINDER HEAD	B-02	HANDLE LEVER.....	H-04	RADIATOR.....	D-06	SEAT.....	H-10	WARNING LABEL.....	H-09
CAM SHAFT / VALVE	C-03	CUT VALVE.....	B-02	FRONT CYLINDER HEAD	B-02	FRONT CYLINDER HEAD	B-02	REAR CYLINDER.....	I-06	SPACER.....	F-02	WATER PUMP.....	H-04

FIG.28A

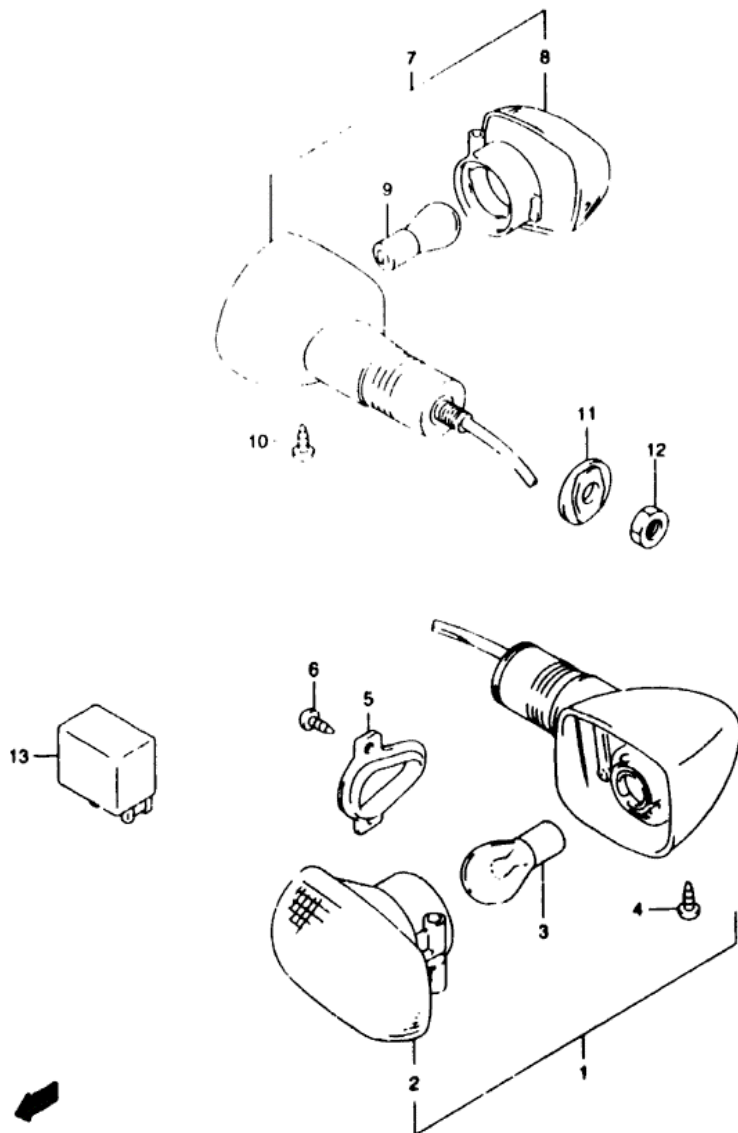


FIG 28A( F. 7)

TURNSIGNAL LAMP (SV650SX/SY E28)

REF.NO.	PART NO.	DESCRIP. ION	Q'TY	REMARKS
1-1	35601-33E30	LAMP ASSY. FRONT TURNSIGNAL RH	1	
1-2	35602-33E30	LAMP ASSY. FRONT TURNSIGNAL LH	1	
2	35610-33E00	LAMP UNIT	2	
3	09471-12945	BULB (12V,21W)	2	
4	03242-04123	SCREW	2	
5	35629-33E00	PLATE FRONT TURNSIGNAL LAMP	2	
6	03511-05103	SCREW	4	
7-1	35603-33E10	LAMP ASSY. REAR TURNSIGNAL RH	1	
7-2	35604-33E10	LAMP ASSY. REAR TURNSIGNAL LH	1	
8	35610-33E00	LAMP UNIT	2	
9	09471-12045	BULB (12V,21W)	2	
10	03242-04123	SCREW	2	
11	35695-17C00	SPACER REAR TURNSIGNAL	2	
12	08310-00103	NUT	2	
13	38610-03F00	RELAY ASSY. TURNSIGNAL LAMP	1	

36 SV650 Y E3/E33

F7

FIG.29

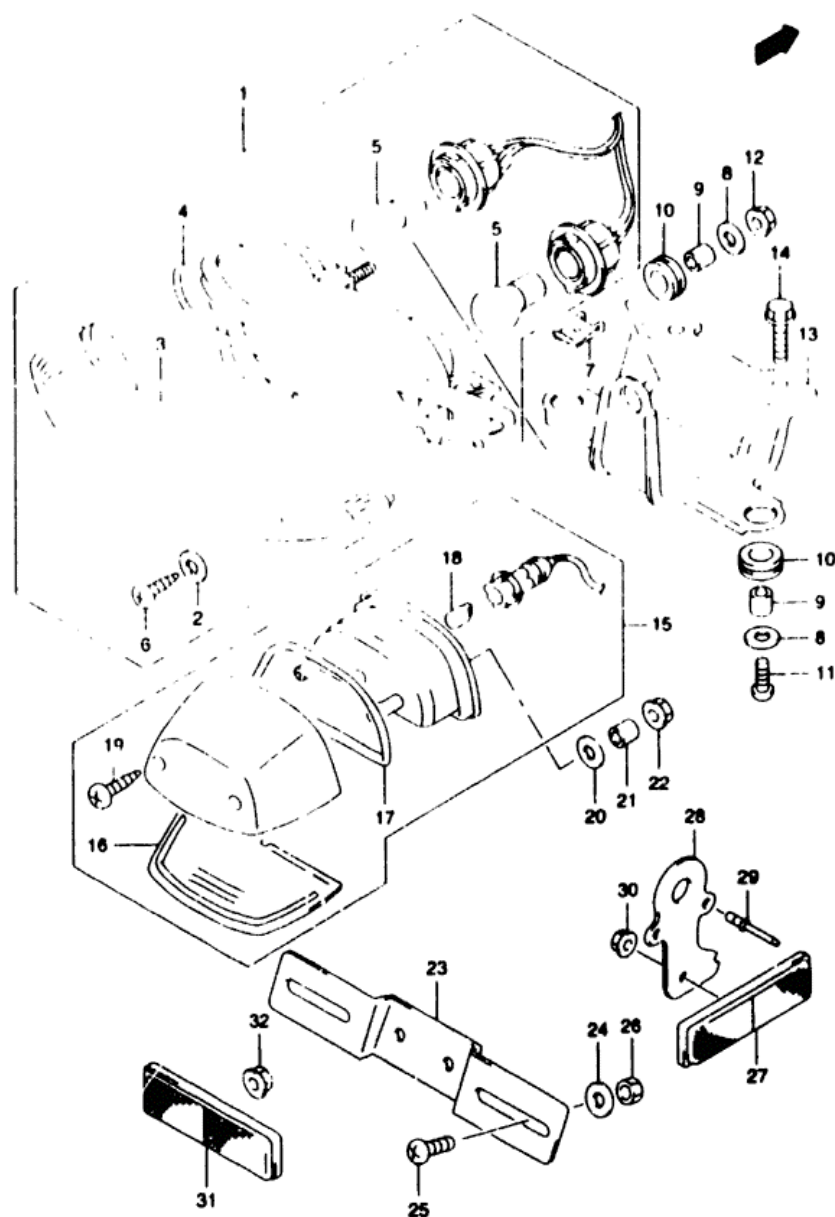


FIG 29 ( F-8)

TAIL LAMP

REF.NO.	PART NO.	DESCRIPTION	Q'TY	REMARKS
1	35710-02F30	LAMP ASSY. REAR COMBINATION	1	
2	35627-43010	GASKET	2	
3	35712-02F30	LENS	1	
4	35713-02F00	GASKET	1	
5	09471-12128	BULB (12V 21/W)	1	
6	03211-04207	SCREW	2	
7	09148-05020	NUT	2	
8	09160-06088	WASHER (6.5X20X1.6)	3	
9	09180-06285	SPACER (6.5X10X9)	3	
10	09320-09007	WASHER	3	
11	03541-05203	SCREW	2	
12	08316-10063	NUT	1	
13	35726-19F00	BRACKET REAR COMBINATION	1	
14	01550-06123	BOLT	1	
15	35710-02F00	LAMP ASSY. LICENSE	1	
16	35712-02F00	LENS	1	
17	35913-02F00	GASKET	1	
18	09471-12081	BULB (12V 5W)	1	
19	03211-04163	SCREW	2	
20	09160-06088	WASHER (6.5X20X1.6)	2	
21	09180-05054	SPACER (5.5X9.5X11.5)	2	
22	08315-10053	NUT	2	
23	35927-48830	BRACKET LICENSE PLATE	1	
24	09160-06088	WASHER (6.5X20X1.6)	2	
25	02142-06123	SCREW	2	
26	08316-10063	NUT	2	
27	35970-07F00	REFLECTOR ASSY. REAR	2	
28	35975-19F00	BRACKET, REAR SIDE RR	2	
29	09229-04038	RIVET, REAR SIDE	2	
30	08310-00053	NUT, REAR SIDE	2	
31	35970-07F00	REFLEX REFLECTOR ASSY	1	
32	08316-10053	NUT, REAR	1	

37 SV650 Y E3/E33

F8

AIR CLEANER..... C-08	CRANKCASE COVER..... B-07	FRONT BRAKE HOSE... I-07	GEAR SHIFTING..... D-12	OPTIONAL..... J-07	REAR WHEEL..... J-04	TRANSMISSION..... D-10
BATTERY..... E-04	CRANKCASE..... B-05	FRONT CALIPER..... I-06	HANDLE BAR..... H-02	RADIATOR HOSE..... D-07	SEAT TAIL COVER..... H-11	TURN SIGNAL LAMP..... F-06
CAM CHAIN..... C-64	CRANKSHAFT..... B-08	FRONT CYLINDER HEAD B-02	HANDLE LEVER..... H-04	RADIATOR..... D-06	SEAT..... H-10	WARNING LABEL..... H-09

FIG.30

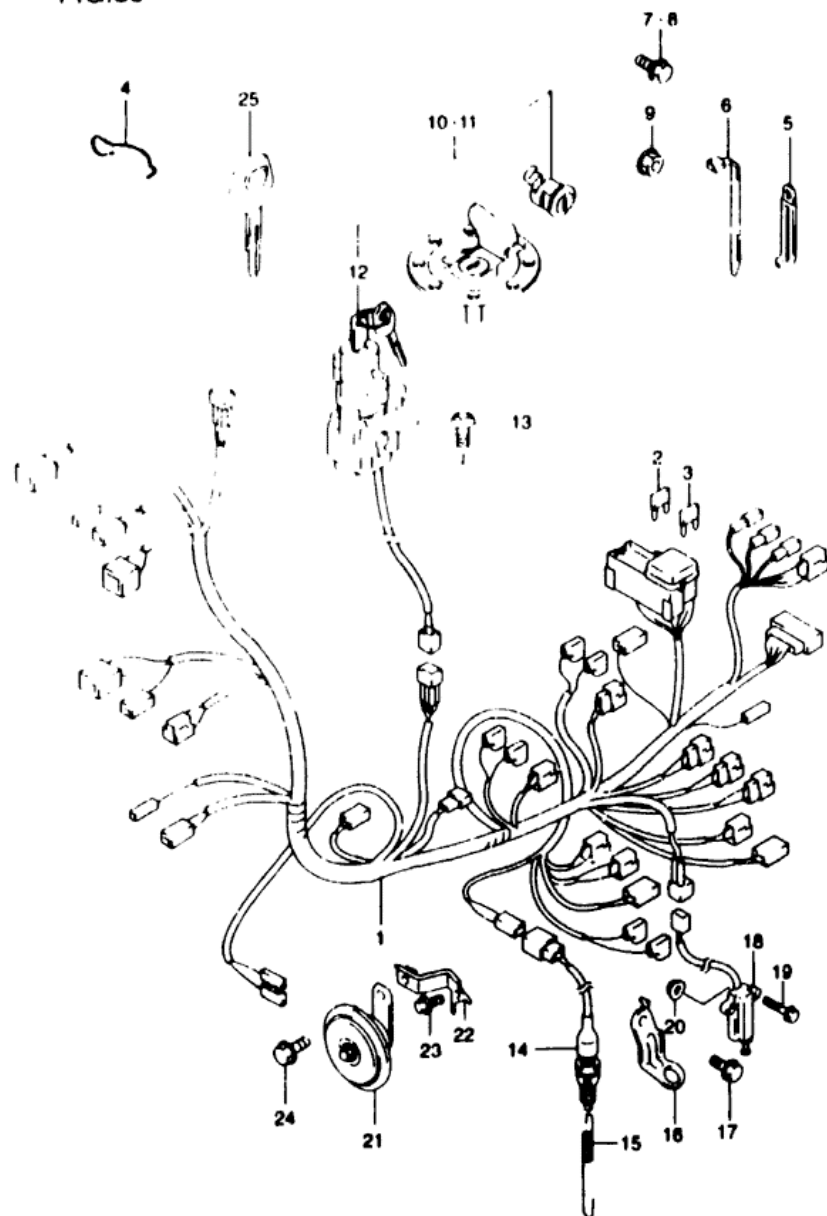


FIG 30 ( F-9)

WIRING HARNESS (SV650X/Y)

REF.NO.	PART NO.	DESCRIPTION	Q'TY	REMARKS
1	36610-20F10	HARNESS, WIRING NO 1	1	
2	09481-10501	FUSE (10A)	2	
3	09481-15501	FUSE (15A)	3	
4	36619-20F00	GUIDE, WIRING HARNESS	1	
5-1	09404-06432	CLAMP (L 80)	4	
5-2	09404-06435	CLAMP (L 135)	1	
5-3	09404-08207	CLAMP (L 97)	4	
6-1	09407-14403	CLAMP (L 125)	5	
6-2	09407-18402	CLAMP (L 165)	4	
7	01550-06123	BOLT, WIRING HARNESS	2	
8	01550-08253	BOLT, WIRING HARNESS	1	
9	08316-10083	NUT, WIRING HARNESS	1	
10	37101-19830	LOCK SET	1	
11	37101-19840	LOCK SET	1	E 43
12	37100-19F00	LOCK ASSY, STEERING	1	
13	09139-08016	BOLT (RX20)	2	
14	37740-31D00	SWITCH ASSY, STOP LAMP	1	
15	09443-06065	SPRING	1	
16	43251-19F10	BRACKET, STOP LAMP SWITCH	1	
17	01550-06123	BOLT	1	
18	37840-19F00	SWITCH ASSY, SIDE STAND	1	
19	37849-19F00	BOLT	2	
20	08316-10063	NUT	1	
21	38500-02F60	HORN ASSY	1	
22	38590-19F00	BRACKET, HORN	1	
23	01550-06123	BOLT	1	
24	01550-08123	BOLT	1	
25	37146-33E00	KEY, BLANK	1	OPT

REFER TO FIG 30A(F-10) FOR SV650S/X/SY E28