

FIG.45



FIG 45 (H-8)

COWLING INSTALLATION PARTS (SV650SX/SY E28) CANADA ONLY

REF.NO.	PART NO.	DESCRIPTION	Q'TY	REMARKS
1	94510-19F00	BRACE COWLING	1	
2	01550-08303	BOLT	2	
3	02142-05123	SCREW	2	
4	02142-05203	SCREW	2	
5	01159-05019	NUT	2	
6	94484-24F00	NUT COWLING	4	
7	03409-06314-5PK	CLIP (BLACK)	2	
8	03241-15163	SCREW	2	
9	09148-05038	NUT	2	
10	94521-19F00	BRACKET SIDE UPPER RH	1	
11	94531-19F00	BRACKET SIDE UPPER LH	1	
12	01500-06123	BOLT UPPER	2	
13	94541-19F00	BRACKET SIDE REAR LH	1	
13A	01500-06163	BOLT SIDE REAR	1	
14	09320-08018	CUSHION (Hx2x1)	1	
15	09320-09016	CUSHION	1	
16	09139-06087	SCREW (M6X20)	1	
17	09139-05054	SCREW (M5X16)	11	

58 SV650 Y E3/E33

H 8

AIR CLEANER..... C-08 CRANKCASE COVER..... B-07 FRONT BRAKE HOSE.... I-07 GEAR SHIFTING..... D-12 OPTIONAL..... J-07 REAR WHEEL..... J-04 TRANSMISSION..... D-10
 BATTERY..... F-04 CRANKCASE..... B-04 FRONT FALIPER..... I-04 HANDLE BAR..... M-05 RADIATOR HOSE..... D-07 SEAT TAIL COVER..... H-11 TURN SIGNAL LAMP..... F-06

FIG.47

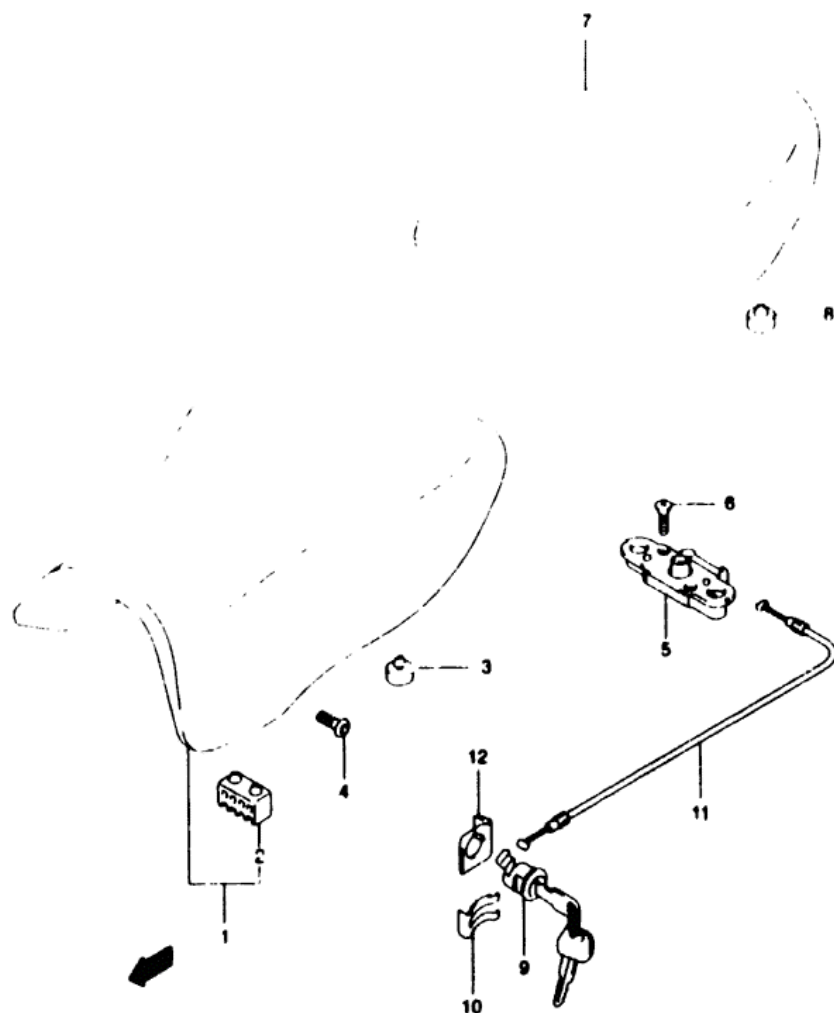


FIG 47 (13-10) SEAT

REF.NO.	PART NO.	DESCRIPTION	Q'TY	REMARKS
1	45100-19F50-W05	SEAT ASSY (BLACK)	1	
2	45149-31300	CUSHION	1	
3	09321-10002	CUSHION	2	
4	09106-06064	BOLT (6X18)	2	
5	45220-20A01	BRACKET SEAT SUPPORT REAR	1	
6	02122-06303	SCREW	2	
7	45300-19F50-W05	SEAT ASSY PILLION (BLACK)	1	
8	09321-10011	CUSHION	2	
9	95700-14810	LOCK SET SEAT	1	
10	45289-11F00	PLATE SEAT LOCK	1	
11	45280-38400	CABLE SEAT LOCK	1	
12	45288-14F00	GUIDE SEAT LOCK CABLE	1	

60 Sv650 Y E3/E33

H 10

AIR CLEANER..... C-08	CRANKCASE COVER.... B-07	FRONT BRAKE HOSE... I-07	GEAR SHIFTING..... D-12	OPTIONAL..... J-07	REAR WHEEL..... J-04	TRANSMISSION..... D-10
BATTERY..... E-04	CRANKCASE..... B-05	FRONT CALIPER..... I-06	HANDLE BAR..... H-02	RADIATOR NOSE..... D-07	SEAT TAIL COVER.... H-11	TURN SIGNAL LAMP.... F-06

FIG.48

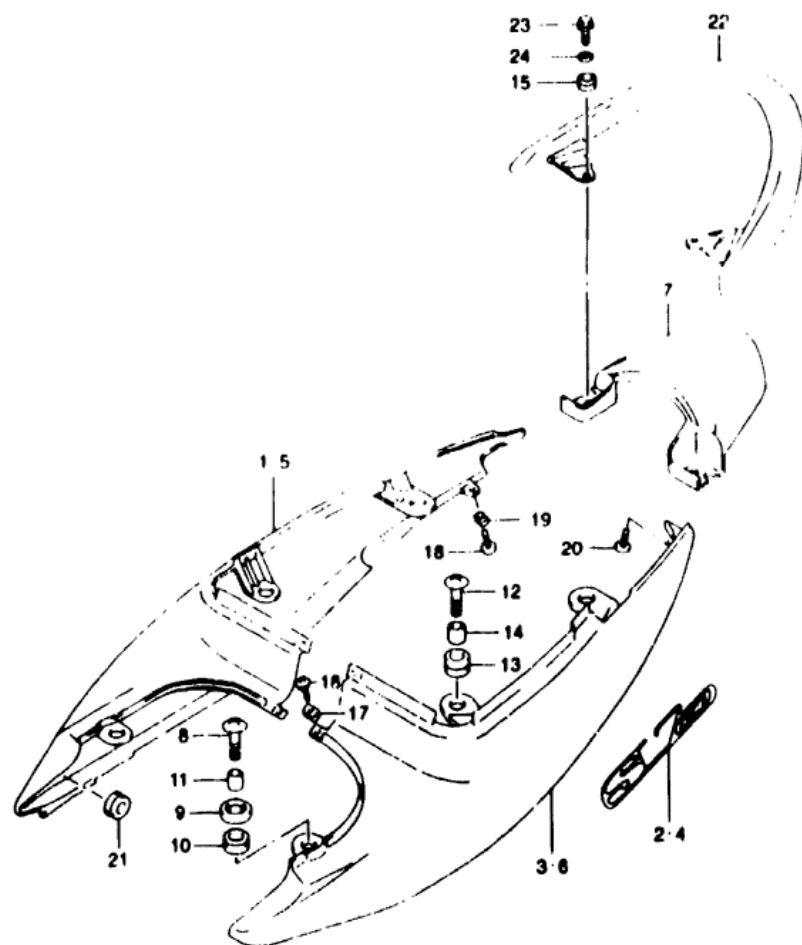


FIG 48 (H-11) SEAT TAIL COVER (MODEL X)

REF.NO.	PART NO.	DESCRIPTION	Q'TY	REMARKS
1-1	45501-20F00-Y7E	COVER, SEAT TAIL RH (BLUE)	1	SV650X
1-2	45501-20F00-Y7M	COVER, SEAT TAIL RH (RED)	1	SV650X
2-1	68165-20F00-NOJ	EMBLEM, TAIL COVER,SV650	1	FOR Y7E
2-2	68165-20F00-NOH	EMBLEM, TAIL COVER,SV650	1	FOR Y7M
3-1	45502-20F00-Y7E	COVER, SEAT TAIL LH (BLUE)	1	SV650X
3-2	45502-20F00-Y7M	COVER, SEAT TAIL LH (RED)	1	SV650X
4-1	68165-20F00-NOJ	EMBLEM, TAIL COVER,SV650	1	FOR Y7E
4-2	68165-20F00-NOH	EMBLEM, TAIL COVER,SV650	1	FOR Y7M
5				NOT LISTED
6				NOT LISTED
7	45503-19F50-35W	COVER, SEAT TAIL CENTER (GRAY)	1	
8	09136-06093	SCREW, FRONT (6X30)	2	
9	47115-19F00	CUSHION, FR UPPER (10X28X13)	2	
10	47115-19F00	CUSHION, FR LOWER (10X22X15)	2	
11	09180-06294	SPACER (6.5X10X15.70)	2	
12	09136-06105	SCREW, CENTER (6X20)	2	
13	09320-10045	CUSHION (10X28X19)	2	
14	09180-06294	SPACER (6.5X10X9.4)	2	
15	47115-05F00	CUSHION, REAR (15X28X12)	2	
16	03241-15123	SCREW	2	
17	09148-05038	NUT	2	
18	03241-15123	SCREW	2	
19	09148-05038	NUT	2	
20	03242-04103	SCREW	2	
21	09320-08018	CUSHION (8X26X7)	2	
22	46210-19F50-291	HANDLE, PILLION RIDER (BLACK)	1	
23	01810-08253	BOLT	2	
24	09160-08126	WASHER	2	

REFER TO FIG 49(H-12) FOR MODEL Y

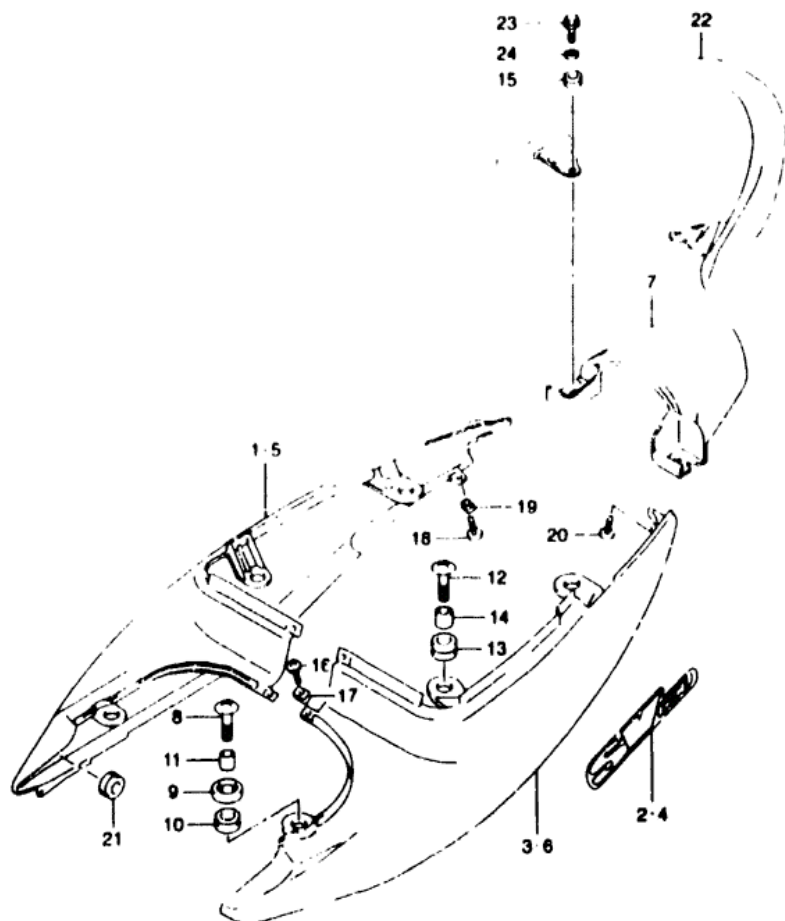
61 SV650 Y E3/E33

H 11

AIR CLEANER..... C-08	CRANKCASE COVER..... B-07	FRONT BRAKE HOSE..... L-07	GEAR SHIFTING..... D-12	OPTIONAL..... J-07	REAR WHEEL..... J-04	TRANSMISSION..... D-10
BATTERY..... E-04	CRANKCASE..... B-05	FRONT CALIPER..... I-04	HANDLE BAR..... H-02	RADIATOR HOSE..... D-07	SEAT TAIL COVER..... H-11	TURNSIGNAL LAMP..... F-06

FIG.49

FIG 49 (H-12) SEAT TAIL COVER (MODEL Y)



REF.NO.	PART NO.	DESCRIPTION	Q'TY	REMARKS
1-1	45501-20F00-YC2	COVER, SEAT TAIL RH (BLUE)	1	SV650Y FOR YC2
1-2	45501-20F00-Z7X	COVER, SEAT TAIL RH (RED)	1	SV650Y FOR Y7M
2-1	68165-20F00-N9W	EMBLEM, TAIL COVER SV650	1	FOR YC2
2-3	68165-20F00-N9V	EMBLEM, TAIL COVER SV650	1	FOR Z7X
3-1	45502-20F00-YC2	COVER, SEAT TAIL LH (BLUE)	1	SV650Y FOR YC2
3-3	45502-20F00-Z7X	COVER, SEAT TAIL LH (RED)	1	SV650Y FOR Y7M
4-1	68165-20F00-N9W	EMBLEM, TAIL COVER SV650	1	FOR YC2
4-3	68165-20F00-N9V	EMBLEM, TAIL COVER SV650	1	FOR Z7X
5				NOT LISTED
7				NOT LISTED
7-1	45503-19F50-35W	COVER, SEAT TAIL CENTER (GRAY)	1	FOR YC2 Y7M Y9F
7-2	45503-19F50-Y7L	COVER, SEAT TAIL CENTER (BLACK)	1	FOR Y7L

62 SV650Y E3/E33

H 12

AIR CLEANER..... C-08	CRANKCASE COVER.... B-07	FRONT BRAKE HOSE... I-07	GEAR SHIFTING..... D-12	OPTIONAL..... J-07	REAR WHEEL..... J-04	TRANSMISSION..... D-10
BATTERY..... E-04	CRANKCASE..... B-05	FRONT CALIPER..... I-04	MAIN F. BAR..... H-02	RADIATOR HOSE..... D-07	SEAT TAIL COVER.... H-11	TURN SIGNAL LAMP.... F-06

FIG.50

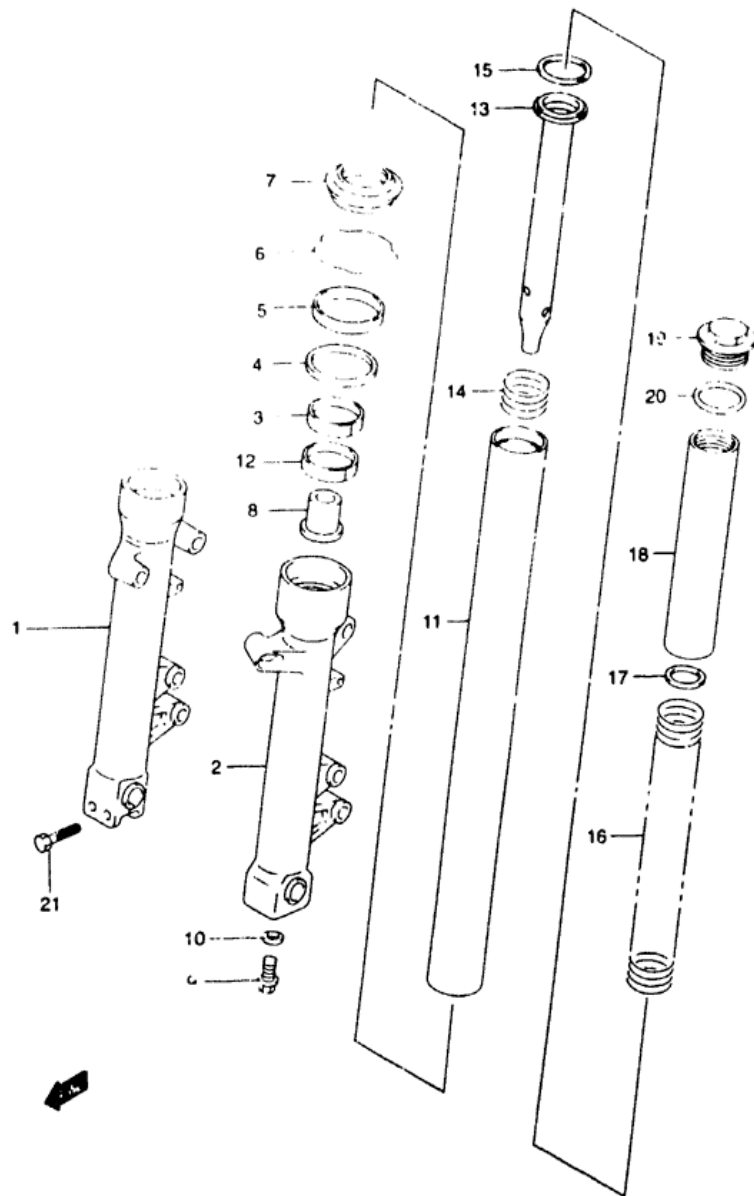


FIG 50 (1-2)

FRONT FORK DAMPER

REF.NO.	PART NO.	DESCRIPTION	Q'TY	REMARKS
	51103-20F20	DAMPER ASSY, FRONT FORK RH	1	SV650X/Y
	51104-20F20	DAMPER ASSY, FRONT FORK LH	1	SV650X/Y
1	51130-20F00	TUBE, OUTER RH	1	
2	51140-20F00	TUBE, OUTER LH	1	
3	51167-26E10	METAL SLIDE	2	
4	51158-05A00	WASHER	2	
5	51153-14F00	SEAL, OIL	2	
6	51156-49440	CIRCLIP	2	
7	51173-14F00	SEAL, DUST	2	
8	51195-33D10	PIECE, OIL LOCK	2	
9	51147-16510	BOLT	2	
10	51148-41310	WASHER	2	
11	51110-20F00	TUBE, INNER	2	
12	51121-33D10	PISTON	2	
13	51146-20F20	CYLINDER	2	SV650X/Y
14	51177-06C00	SPRING	2	
15	51196-33D10	RING, PISTON	2	
16	51171-19F	SPRING, FRONT	2	
17	51356-10DC	WASHER	2	
18-1	51176-20F20	SPACER, SPRING	2	SV650X/Y
19	51351-33D00	CAP	2	
20	09280-32001	O RING	2	
21	01550-08457	BOLT, RH	2	

64 SV650 Y E3/E33

12

FIG. 51

Exploded view diagram of a mechanical assembly, likely a bicycle rear hub and axle. The diagram shows various components labeled with numbers 1 through 24. The main assembly includes a hub body (1), a central axle (2), and a rear dropout (3). Other components include a lock nut (4), a lock washer (5), a lock cone (6), a lock ring (7), a lock pin (8), a lock nut (9), a lock washer (10), a lock pin (11), a lock nut (12), a lock washer (13), a lock ring (14), a lock cone (15), a lock pin (16), a lock nut (17), a lock washer (18), a lock pin (19), a lock nut (20), a lock washer (21), a lock pin (22), and a lock nut (23). A small arrow points to the right at the bottom left.

STEERING STEM (SV65077)

REFER TO FIG.51A(I-4; FOR SV650SX/SY E28

FIG.51A

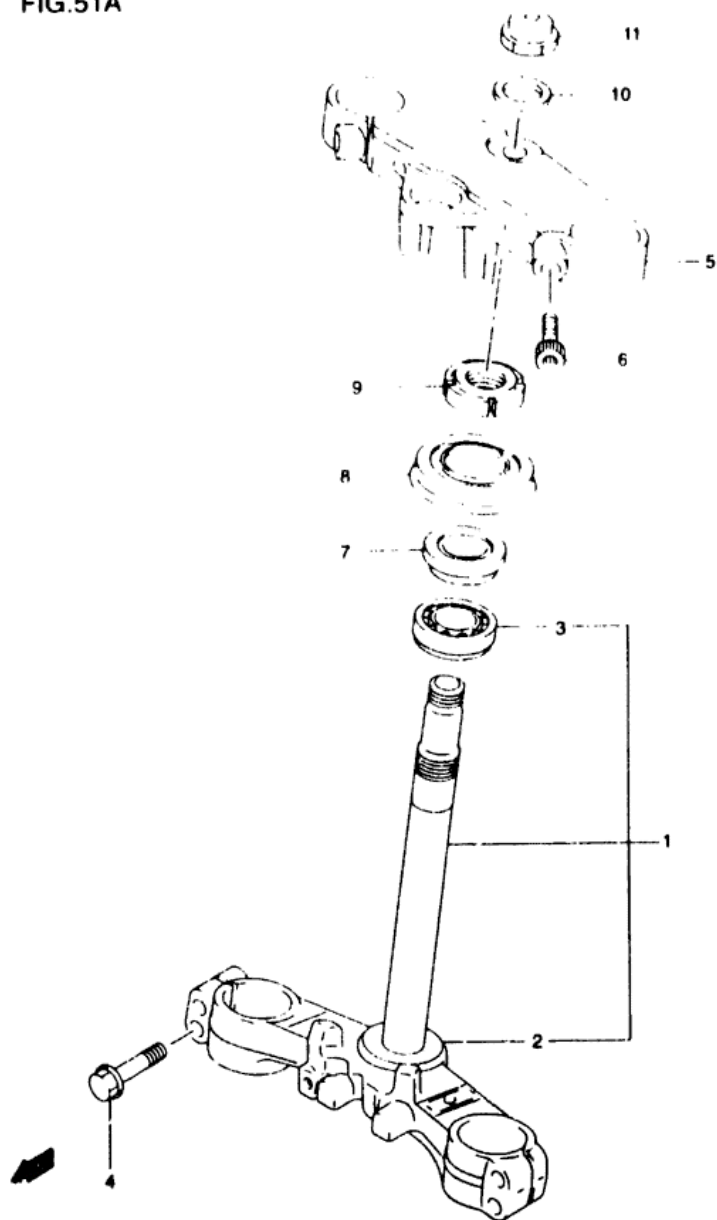


FIG 51A(1-4)

STEERING STEM (SV650SX/SY E28) CANADA ONLY

Q'TY

REF.NO.	PART NO.	DESCRIPTION	Q'TY	REMARKS
1	51410-19F00	STEM STEERING	1	
2	51644-12C00	SEAL STEERING LOWER	1	
3	09267-30010	BEARING (30X55X17)	1	
4	01550-08407	BOLT	4	
5	51311-19F00	HEAD STEERING STEM	1	
6	51328-03FA0	BOLT	2	
7	09267-25009	BEARING (25X47X15)	1	
8	09285-34009	OIL SEAL (34X69X11 1/4)	1	
9	51631-78000	NUT STEERING STEM	1	
10	51356-10D03	WASHER	1	
11	51353-25A10	NUT	1	

66 SV650 Y E3/E33

14

AIR CLEANER..... C-08 CRANKCASE COVER.... B-07 FRONT BRAKE HOSE... I-07 GEAR SHIFTING..... D-12 OPTIONAL..... J-07 REAR WHEEL..... J-04 TRANSMISSION..... D-10
 BATTERY..... E-04 CRANKCASE..... B-05 FRONT CALIPER..... I-04 HANDLE BAR..... H-02 RADIATOR HOSE..... D-07 SEAT TAIL COVER.... H-11 TURN SIGNAL LAMP.... F-04

FIG.52

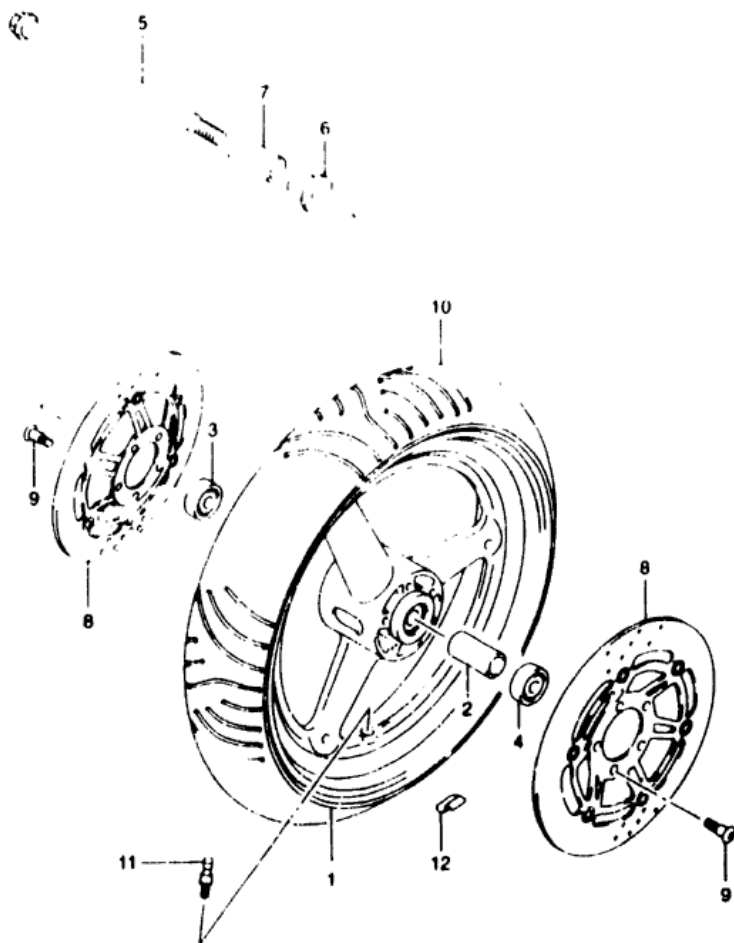


FIG 52 (1-5)

FRONT WHEEL

REF.NO.	PART NO.	DESCRIPTION	Q'TY	REMARKS
1-1	54111-03FA0-Y6G	WHEEL FRONT (17XMT3.50) (SILVER)	1	MODEL X
1-2	54111-03FA0-12R	WHEEL FRONT (17XMT3.50) (SILVER)	1	MODEL Y
2	09180-17094	SPACER (17.5X22.5X73)	1	
3	08134-62037	BEARING RH	1	
4	08134-62037	BEARING LH	1	
5	54711-07F00	AXLE FRONT	1	
6	54740-32070	SPACER FRONT AXLE RH	1	
7	54741-03FA0	SPACER FRONT AXLE RH	1	
8	59210-08F00	DISC FRONT BRAKE	2	
9	09174-08125	BOLT 8X14	10	
10	55111-21F04	TIRE FRONT 17.5X22.5X73 METZLER	1	
11	4310-24A04	VALVE AIR WHEEL R M 1741	1	
12-1	55411-00A00	BALANCER WHEEL 100	0-3	
12-2	55412-00A01	BALANCER WHEEL 100	0-3	

FIG.53

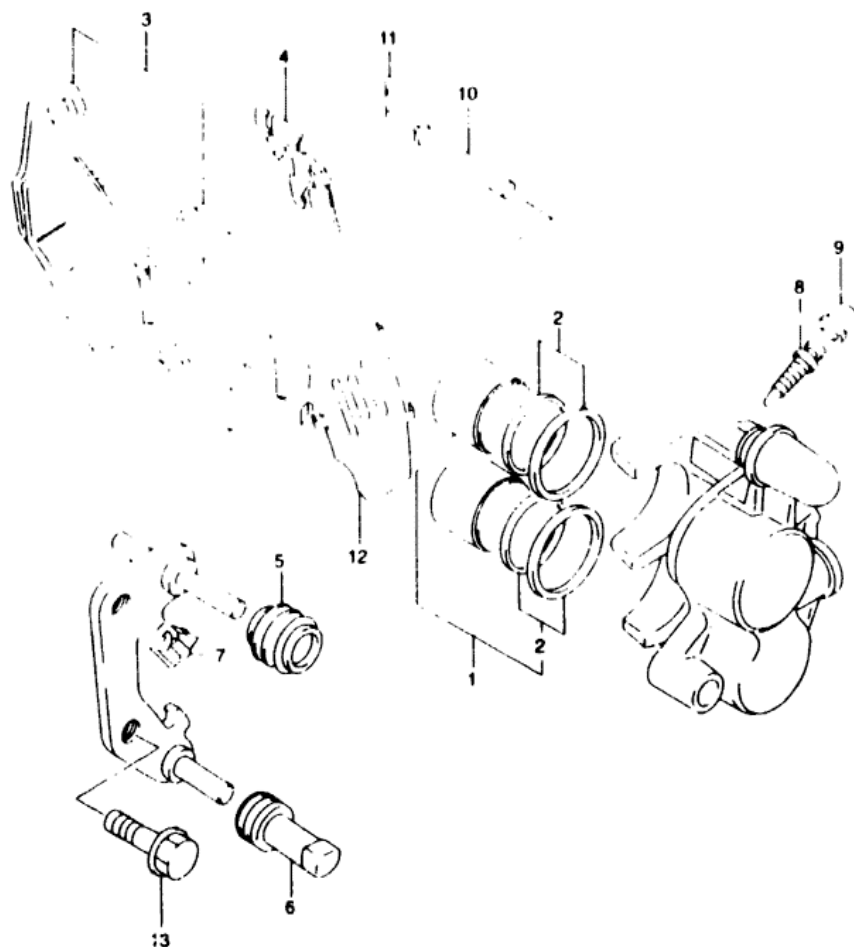


FIG 53 (1-6)

FRONT CALIPER

REF.NO.	PART NO.	DESCRIPTION	Q'TY	REMARKS
	59100-33D80	CALIPER ASSY. FRONT RH	1	
	59300-33D80	CALIPER ASSY. FRONT LH	1	
1	59300-33830	PISTON SET	2	
2	59300-33840	SEAL SET PISTON	2	
3-1	59101-33850	PAD SET RH	1	
3-2	59301-33850	PAD SET LH	1	
4-1	59115-33D00	SPRING RH	1	
4-2	59315-33D00	SPRING LH	1	
5	59112-44B00	BOOT	2	
6	59313-36500	INSULATOR	2	
7	59116-33D00	GUIDE	2	
8	59121-18410	BLEEDER	2	
9	55155-66310	CAP	2	
10	59141-44B01	PIN	2	
11	69142-45000	CLIP	2	
12	59171-33D00	SHIM	2	
13	01550-10253	BOLT	4	

FIG.54

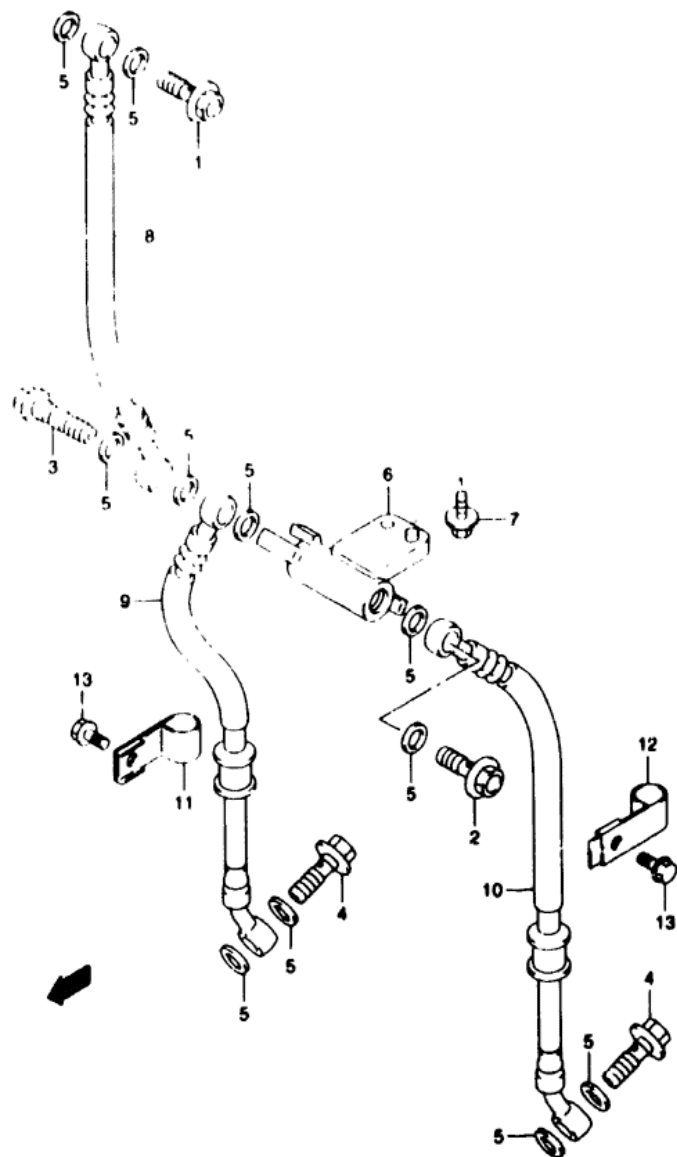


FIG 54 (1-7)

FRONT BRAKE HOSE

REF.NO.	PART NO.	DESCRIPTION	Q'TY	REMARKS
1	09360-10041	BOLT UPPER (10X1 00X22)	1	
2	09360-10041	BOLT JOINT (10X1 00X22)	1	
3	09360-10043	BOLT (10X1 00X36)	1	
4	09360-10042	BOLT LOWER (10X1 25X22)	2	
5	09161-10009	WASHER (10X15X1.5)	11	
6	59491-17E00	JOINT BRAKE HOSE	1	
7	01550-06163	BOLT	1	
8	59480-20F10	HOSE FRONT BRAKE NO 1	1	0,650x7
9	59240-20F00	HOSE FRONT BRAKE NO 2 RH	1	
10	59440-20F00	HOSE FRONT BRAKE NO 2 LH	1	
11	59268-45D00	CLAMP BRAKE HOSE NO 2 RH	1	
12	59269-20F00	CLAMP BRAKE HOSE NO 2 LH	1	
13	01550-06123	BOLT	2	

FIG.55

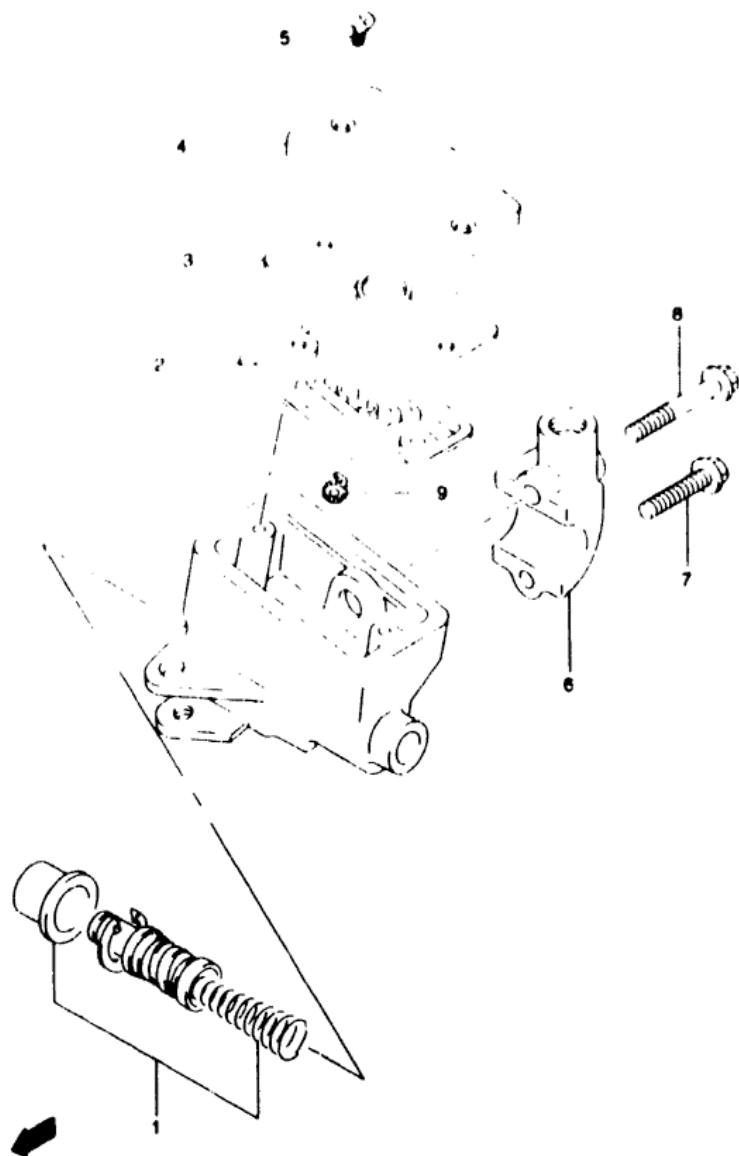


FIG 55 (1-8)

FRONT MASTER CYLINDER (SV650X/Y)

REF.NO.	PART NO.	DESCRIPTION	Q'TY	REMARK
	59600-20C20	CYLINDER ASSY. FRONT MASTER	1	
1	59600-45860	PISTON/CUP SET	1	
2	59667-49460	DIAPHRAGM	1	
3	59668-41C00	PLATE DIAPHRAGM	1	
4	59669-41C00	CAP	1	
5	69689-49300	SCREW	2	
6	59671-44300	HOLDER	1	
7	59675-19C00	BOLT HOLDER (6x25)	1	
8	59675-19C10	BOLT HOLDER (6x38)	1	
9	59664-48B00	PROTECTOR	1	

REFER TO FIG 55A(1-9) FOR Q/TY OF EACH E28

FIG.55A

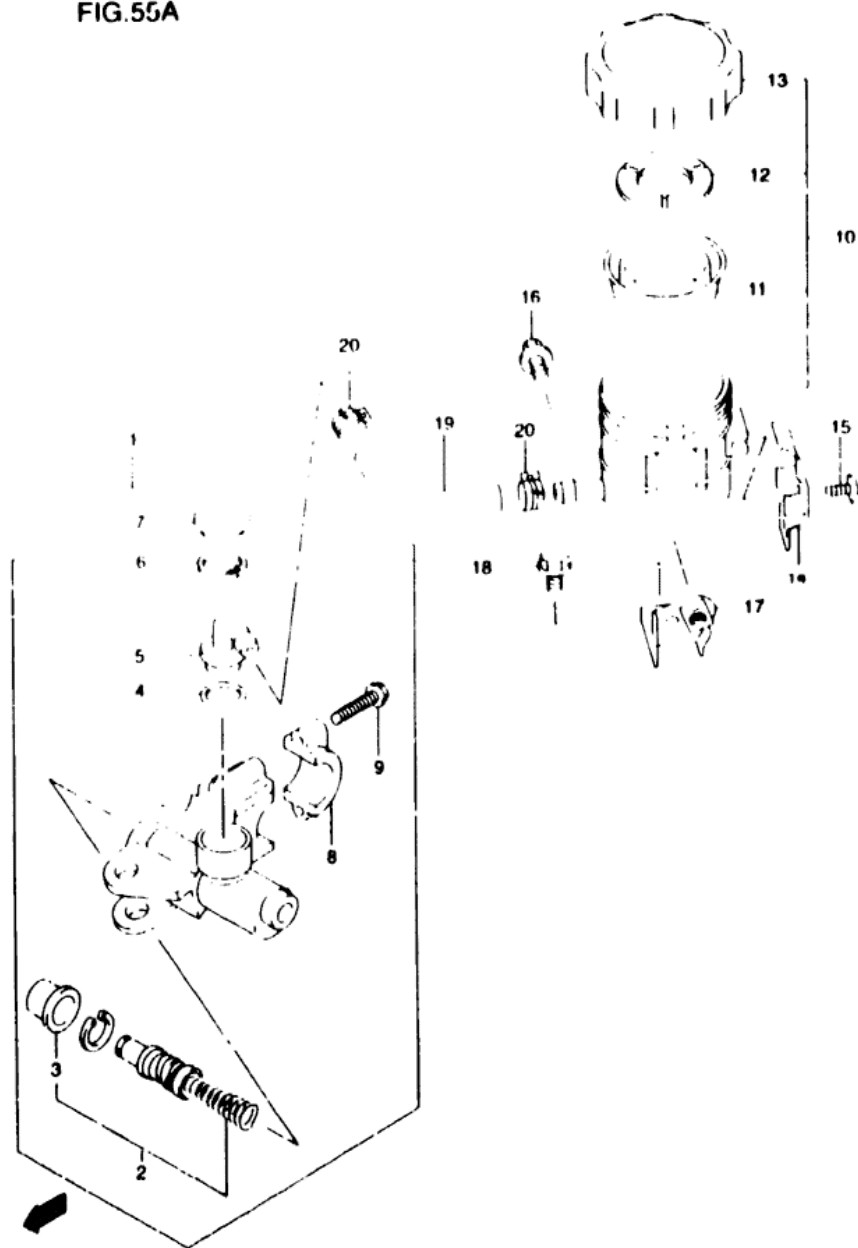


FIG 55A(1-9)

FRONT MASTER CYLINDER (SV650SX/SY E28) CANADA ONLY

REF.NO.	PART NO.	DESCRIPTION	Q'TY	REMARKS
1	59600-32C01	CYLINDER ASSY FRONT MASTER	1	
2	59600-45860	PISTON/CUP SET	1	
3	59666-44300	BOOT	1	
4	69686-34200	O RING	1	
5	59672-17C00	CONNECTOR	1	
6	59674-14B20	CIRCLIP	1	
7	59673-17C00	COVER DUST	1	
8	59671-36500	HOLDER (BLACK)	1	
9	59675-19C00	BOLT HOLDER (5x25)	2	
10	59740-07D00	TANK ASSY RESERVOIR	1	
11	59667-18441	DIAPHRAGM	1	
12	59668-18441	PLATE DIAPHRAGM	1	
13	59669-07F00	CAP	1	
14	59741-17C00	PLATE RESERVOIR TANK ADJ	1	
15	02142-04103	SCREW	1	
16	01550-06123	BOLT	1	
17	59750-33E01	BRACKET RESERVOIR TANK FRONT	1	
18	01550-06123	BOLT	1	
19	59731-32C00	HOSE FRONT RESERVOIR TANK	1	
20	59735-17C00	CLAMP RESERVOIR TANK	2	

71 SV650 Y E3/E33

19

AIR CLEANER..... C-08	CRANKCASE COVER..... B-07	FRONT BRAKE HOSE..... I-07	GEAR SHIFTING..... D-12	OPTIONAL..... J-07	REAR WHEEL..... J-04	TRANSMISSION..... D-10
BATTERY..... E-04	CRANKCASE..... B-05	FRONT CALIPLR..... I-06	HANDLE BAR..... H-02	RADIATOR HOSE..... D-07	SEAT TAIL COVER..... H-11	TURN SIGNAL LAMP..... F-06

FIG.56

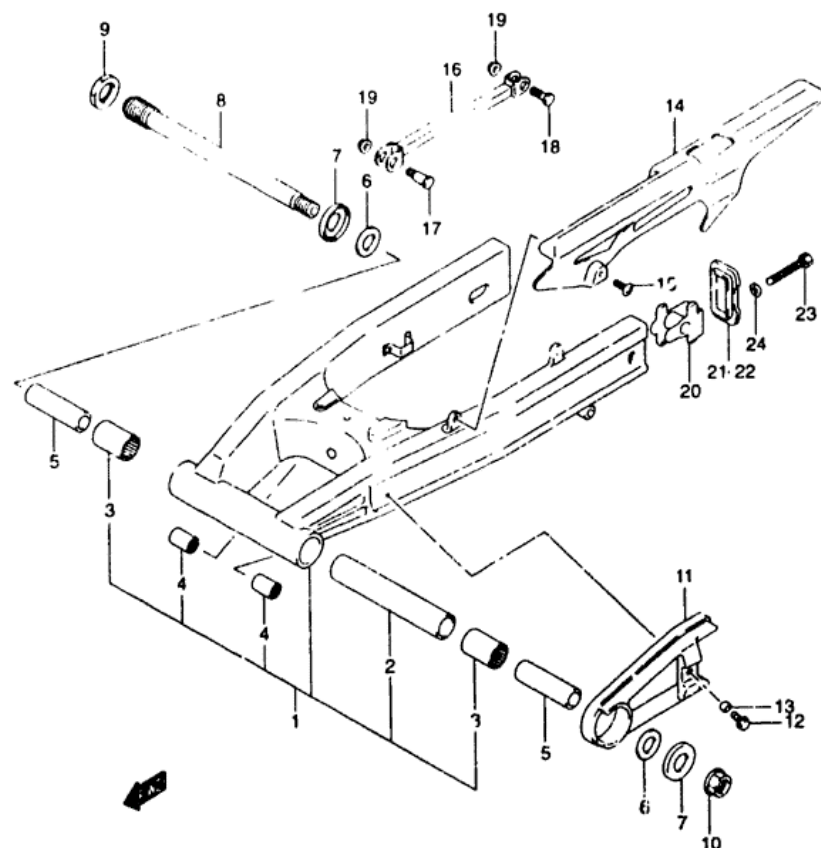


FIG.56 (J-2)

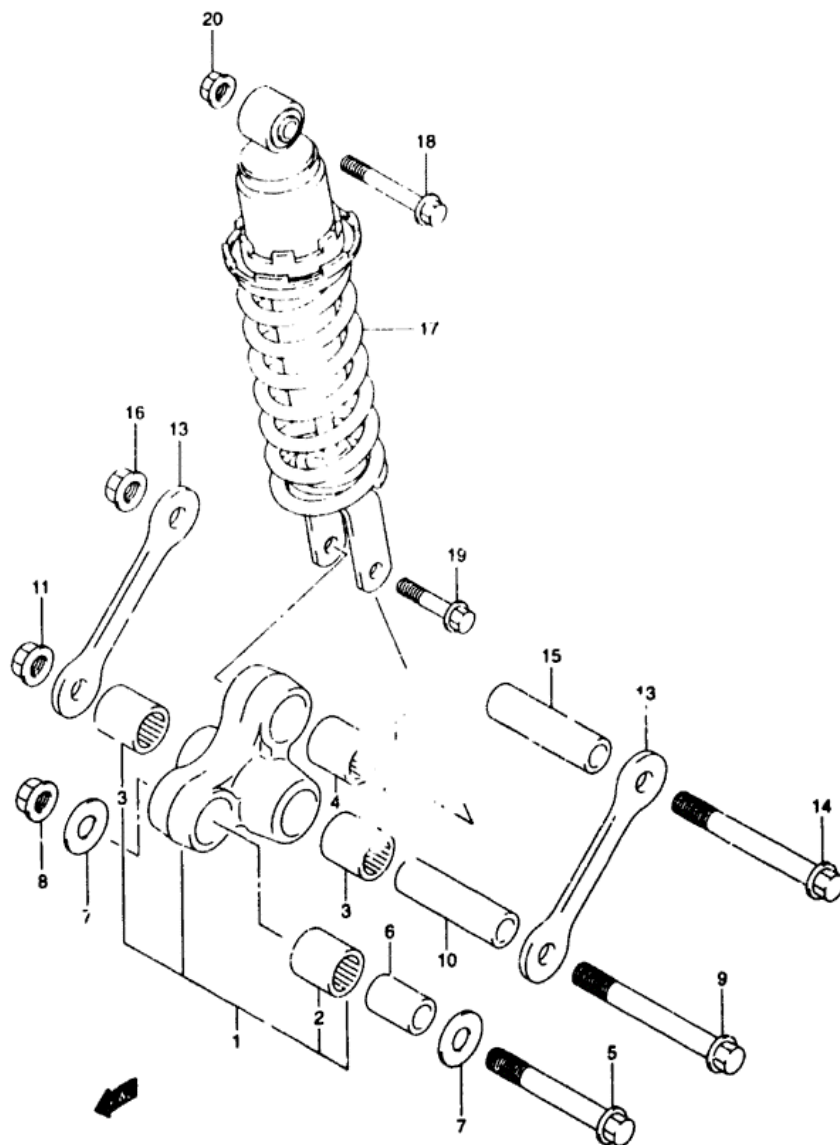
REAR SWINGING ARM

R' F.NO.	PART NO.	DESCRIPTION	Q'TY	REMARKS
1	61000-19F11	SWINGING ARM ASSY. REAR	1	SV650X/Y
2	61281-19F00	SPACER, PIVOT CENTER	1	
3	09263-25024	BEARING, PIVOT (25X33X30)	2	
4	09263-20071	BEARING, ROD (20X27X23 5)	2	
5	61251-21E00	SPACER, PIVOT	2	
6	08211-20381	THRUST WASHER	2	
7	61262-17C00	DUST SEAL, PIVOT	2	
8	61211-19F00	SHAFT, PIVOT	1	
9	61214-19F00	NUT, PIVOT BOLT	1	
10	08319-31188	NUT	1	
11	61273-19F00	BUFFER, CHAIN TUCH DEF.	1	
12	09116-06152	BOLT (6X20)	1	
13	09180-06283	SPACER (6 5X10X7)	1	
14	61310-19F00	CASE, CHAIN	1	
15	09139-06083	SCREW (5X16)	2	
16	64310-19F00	TORQUE LINK, REAR	1	
17	09111-10051	BOLT, FRONT (10X39)	1	
18	09100-10187	BOLT, REAR (10X34)	1	
19	08319-31107	NUT	2	
20	61410-33D00	ADJUSTER, CHAIN	2	
21	61421-33D01	PLATE, ADJUSTER GUIDE RH	1	
22	61422-33D01	PLATE, ADJUSTER GUIDE LH	1	
23	09106-08119	BOLT (8X50)	2	
24	09164-08015	WASHER	2	

72 SV650 Y E3/E33

12

FIG.57



REF.NO.	PART NO.	DESCRIPTION	Q'TY	REMARKS
1	62600-19880	LEVER SET, REAR CUSHION	1	
2	09263-20073	BEARING, FRONT (20X27X30)	1	
3	09263-20071	BEARING, CENTER (20X27X23.5)	2	
4	09263-1703	BEARING, REAR (17X24X26)	1	
5	52658-19F00	BOLT, FRONT (12X78)	1	
6	62684-12C00	SPACER, FRONT (12X20X32)	1	
7	09160-12037	WASHER	2	
8	08319-31128	NUT	1	
9	09103-12034	BOLT, CENTER (12X96)	1	
10	62626-19F00	SPACER, CENTER (12X20X68)	1	
11	08319-31128	NUT	1	
12	62684-40A10	SPACER, REAR (10X17X30)	1	
13	62641-20F00	ROD, REAR CUSHION	2	
14	09103-12034	BOLT, ROD (12X96)	1	
15	62626-19F00	SPACER, ROD (12X20X68)	1	
16	08319-31128	NUT	1	
17	62100-20F10-163	ABSORBER ASSY, REAR SHOCK (YELLOW)	1	SV650X/Y
18	09103-10033	BOLT, UPPER (10X70)	1	
19	09103-10126	BOLT, LOWER (10X48)	1	
20	08319-31107	NUT	1	

73 SV650 Y E3/E33

J3

FIG.58

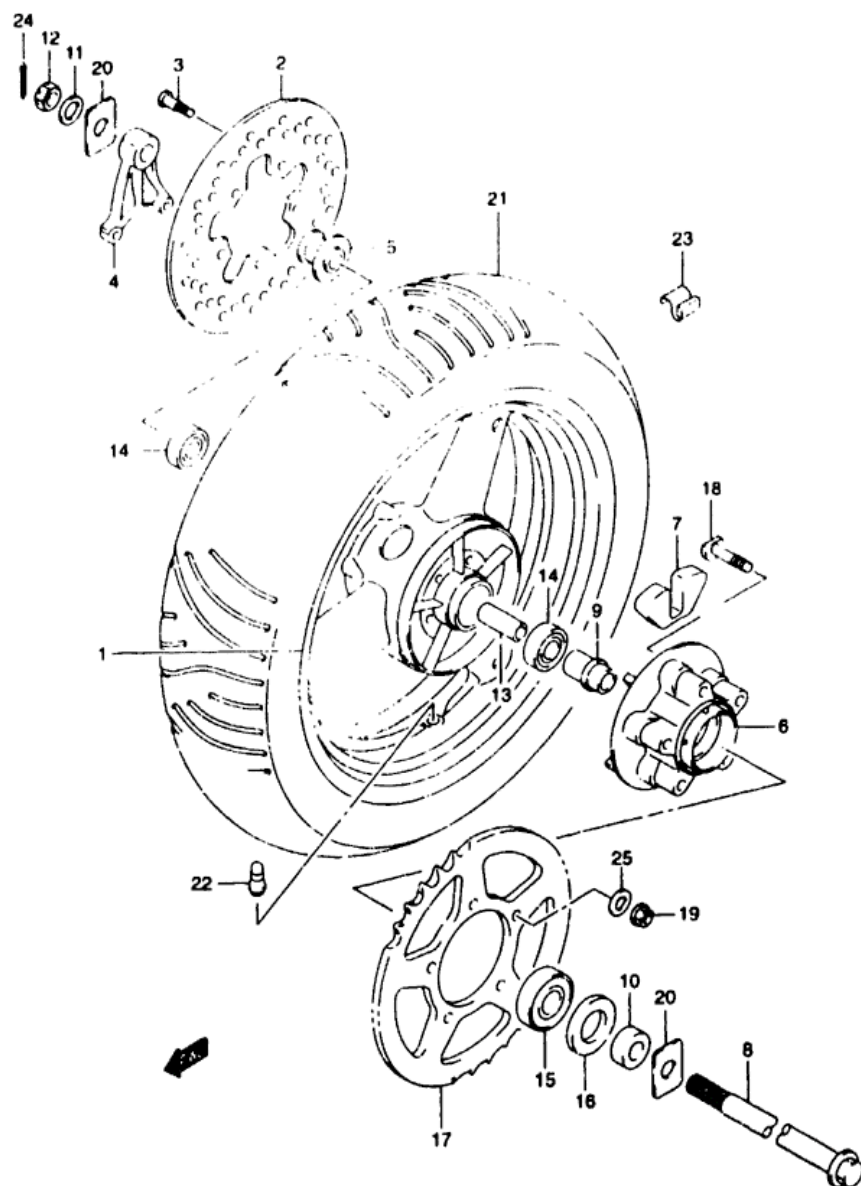


FIG 58 (J-4)

REAR WHEEL

REF.NO.	PART NO.	DESCRIPTION	Q'TY	REMARKS
1-1	64111-08F00-Y6G	WHEEL REAR (17XMT4 50) (SILVER)	1	MODEL X
1-2	64111-08F00-12R	WHEEL REAR (17XMT4 50) (SILVER)	1	MODEL Y
2	69211-21E00	DISC REAR BRAKE	1	
3	09106-08125	BOLT (8X33)	5	
4	69721-33D00	BRACKET REAR CALIPER	1	
5	64740-19C00	SPACER, REAR AXLE RH	1	
6	64611-19F00	DRUM SPROCKET MOUNTING	1	
7	64651-27A01	ABSORBER SHOCK REAR HUB	5	
8	64711-19F10	AXLE REAR	1	
9	64733-34C00	RETAINER REAR SPROCKET DRUM	1	
10	64741-45D00	SPACER REAR AXLE LH	1	
11	09160-17050	WASHER	1	
12	09141-16007	NUT	1	
13	09180-17067	SPACER (17.5x25x88)	1	
14	08143-63037	BEARING	2	
15	09262-25073	BEARING (25X62X17)	1	
16	09285-35001	OIL SEAL (35X62X8)	1	
17	64511-32C00	SPROCKET REAR (NT 45-525)	1	SV550X/Y
18	09119-10043	BOLT (10X47)	5	
19	08319-31107	NUT	5	
20	64712-33D00	WASHER, CHAIN ADJUSTER	2	
21	55110-20F00	TIRE REAR, 160/60 ZR17 (69W) (METZELER)	1	
22	43130-24A00	VALVE ASSY, WHEEL RIM (TR412)	1	
23-1	55411-00A00	BALANCER, WHEEL (10G)	0-3	
23-2	55412-00A01	BALANCER, WHEEL (20G)	0-3	
24	04111-40308	PIN, COTTER	1	
25	09160-10506	WASHER	5	

74 SV650Y E3/E33

J4

FIG.59

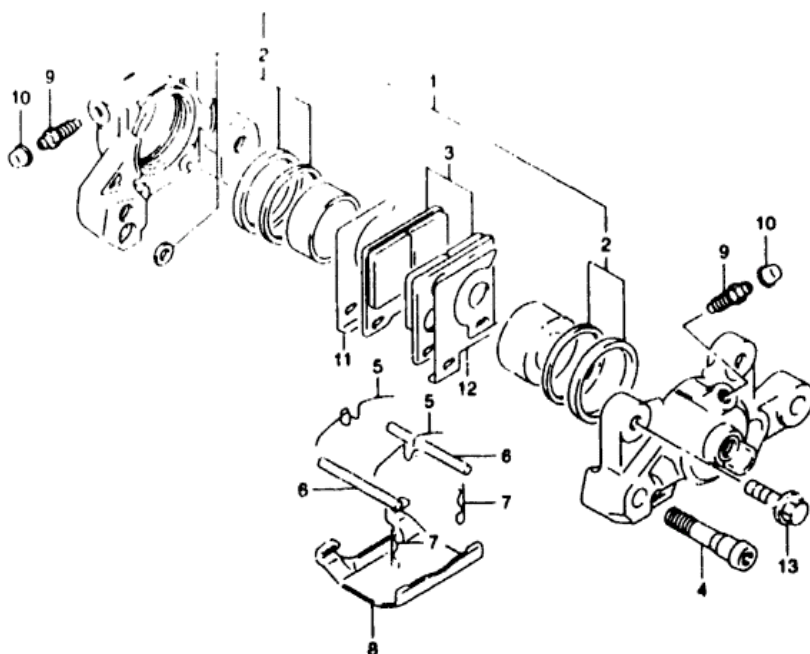


FIG.59 (J-5)

REAR CALIPER

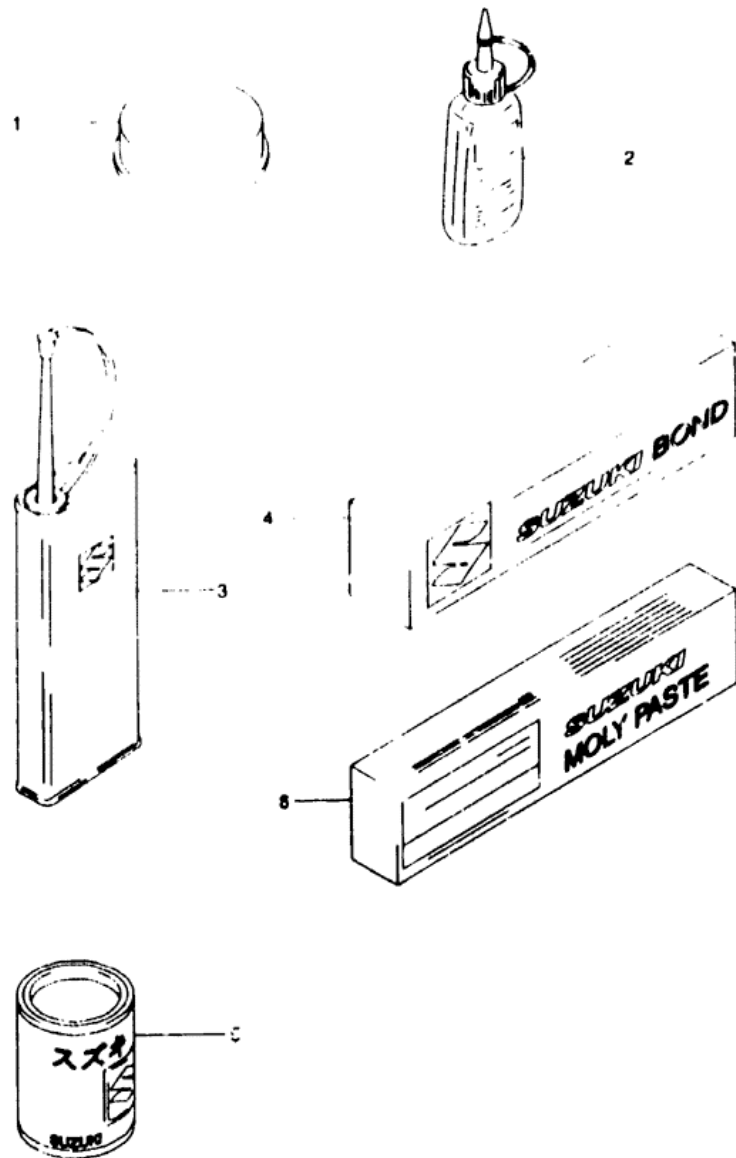
REF.NO.	PART NO.	DESCRIPTION	Q'TY	REMARKS
	69100-05CD0	CALIPER ASSY. REAR	1	
1	69100-05856	PISTON SET	1	
2	69100-32820	SEAL SET PISTON	1	
3	69100-21820	PAD SET	1	
4	59145-05C50	BOLT	2	
5	59143-16700	SPRING	2	
6	69141-45000	PIN	2	
7	69142-45000	CLIP	2	
8	59151-16701	COVER	1	
9	59121-18410	BLEEDER	2	
10	55156-66310	CAP	2	
11	59111-20C00	SHIM INNER	1	
12	59111-20C00	SHIM OUTER	1	
13	01561-0R303	BOLT	2	

75 SV650 Y E3/E33

J5

AIR CLEANER..... C-08	CRANKCASE COVER... B-07	FRONT BRAKE HOSE... I-07	GEAR SHIFTING..... D-12	OPTIONAL..... J-07	REAR WHEEL..... J-04	TRANSMISSION..... D-10
BATTERY..... E-04	CRANKCASE..... B-05	FRONT CALIPER..... I-04	HANDLE BAR..... H-02	RADIATOR HOSE..... D-07	SEAT TAIL COVER... H-11	TURN SIGNAL LAMP... F-06
CAN CHAIN..... C-04	CRANKSHAFT..... B-08	FRONT CYLINDER HEAD B-02	HANDLE LEVER..... H-04	RADIATOR..... D-04	SEAT..... H-10	WARNING LABEL..... H-09
CAN SHAFT / VALVE... C-03	CYLINDER..... B-04	FRONT FENDER..... G-11	HANDLE SWITCH..... F-11	REAR CALIPER..... J-05	SPEEDOMETER..... F-02	WATER PUMP..... D-04
CARBURETOR FITTING C-07	ELECTRICAL..... F-08	FRONT FORK PAMPER I-03	MEAT AMP MOUNTING G-10	REAR CUSHION LEVER J-03	STAND..... G-03	WIRING HARNESS..... F-09

FIG.61



REF.NO.	PART NO.	DESCRIPTION	Q'TY	REMARKS
1	99000-25110	SUZUKI PBC GREASE	1	200G
2-1	99104-32020	THREAD LOCK SUPER (1361A)	1	50G
2-2	99104-32030	THREAD LOCK SUPER (1363A)	1	50G
2-3	99000-32050	THREAD LOCK SUPER (1342)	1	50G
2-4	99000-32100	THREAD LOCK SUPER (1305)	1	50G
2-5	99000-32130	THREAD LOCK SUPER (1360)	1	50G
3	99000-32040	THREAD LOCK CEMENT	1	200G
4-1	99000-31140	SUZUKI BOND (1207B) BLACK	1	100G
4-2	99000-31110	SUZUKI BOND (1215)	1	100G
5	99000-25030	SUZUKI SUPER GREASE	1	100G
6	99000-25140	SUZUKI MOLY PASTE	1	50G

77 SV650Y E3/E33

17

AIR CLEANER..... C-08	CRANKCASE COVER.... B-07	FRONT BRAKE HOSE... I-07	GEAR SHIFTING..... D-12	OPTIONAL..... J-07	REAR WHEEL..... J-04	TRANSMISSION..... D-10
BATTERY..... E-04	CRANKCASE..... B-05	FRONT CALIPER..... I-04	HANDLE BAR..... H-02	RADIATOR HOSE..... D-07	SEAT TAIL COVER.... H-11	TURN SIGNAL LAMP.... F-06