

FIG.1

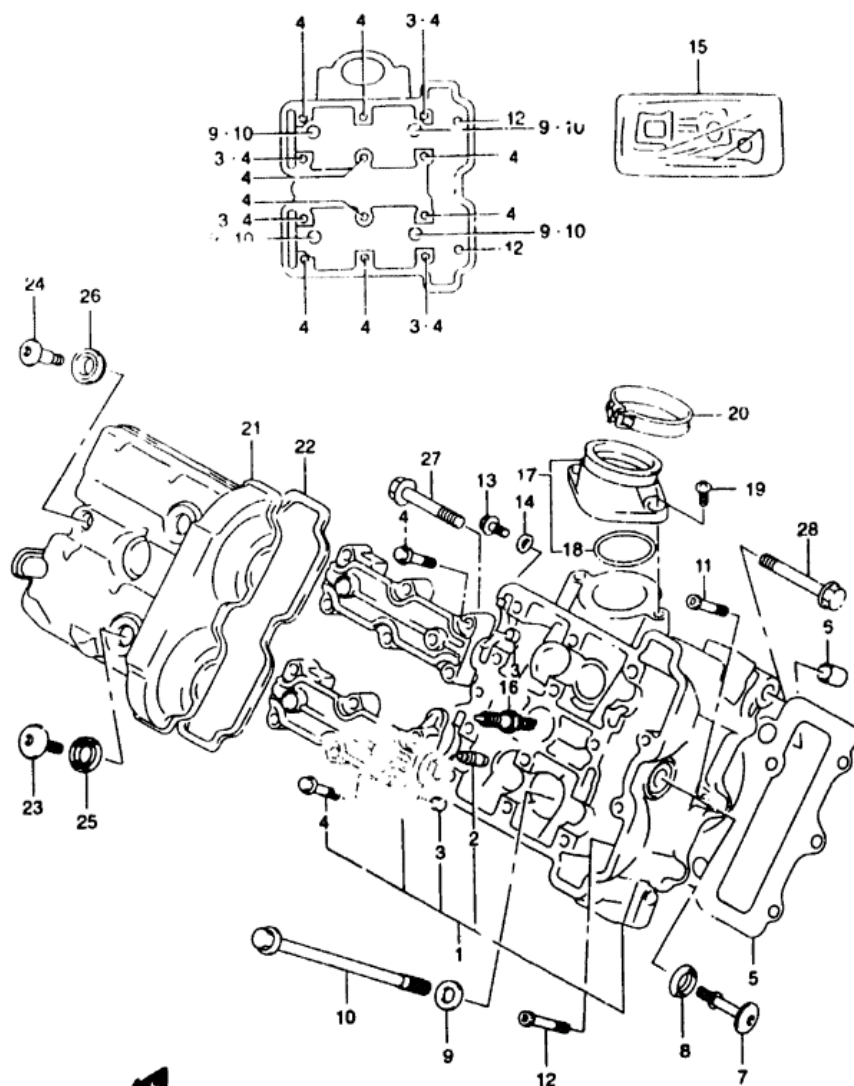


FIG 1 (B-2)

FRONT CYLINDER HEAD

REF.NO.	PART NO.	DESCRIPTION	Q'TY	REMARKS
1-1	11101-20F00	HEAD ASSY, CYLINDER FRONT	1	
1-2	11101-20F10	HEAD ASSY, CYLINDER FRONT	1	E33
2	11115-16D72	GUIDE, VALVE	4	
3	09206-06001	PIN (6 2X8X11)	4	
4	09103-06026	BOLT (6X39)	12	
5	11141-20F00	GASKET, CYLINDER HEAD	1	
6	04211-13189	PIN	2	
7	11161-33E00	BOLT, CYLINDER HEAD SIDE FACE	1	
8	11191-13E00	WASHER, HEAD COVER	1	
9	09160-10082	WASHER (10 5X19X2 0)	4	
10	09103-10272	BOLT (10X160)	4	
11	07120-06403	BOLT	1	
12	09103-06103	BOLT (6X70)	2	
13	07120-06123	BOLT	1	
14	09168-06023	GASKET (5 8X13X1 2)	1	
15	11401-20860	GASKET SET	1	OPT
16-1	09432-00456	SPARK PLUG (NGK,CR8E)	1	
16-2	09482-00457	SPARK PLUG (DENSO,U24ESR-N)	1	
16-3	09482-00458	SPARK PLUG (NGK,CR3E)	1	OPT
16-4	09492-00459	SPARK PLUG (DENSO,U27ESR-N)	1	OPT
16-5	09482-00460	SPARK PLUG (NGK,CR10E)	1	OPT
16-6	09482-00461	SPARK PLUG (DENSO,U31ESR-N)	1	OPT
17	13101-20F00	PIPE ASSY, INTAKE FRONT	1	
18	09280-46006	O RING	1	
19	02122-06163	SCREW	2	
20	09402-56208	CLAMP	1	
21	11171-19F00	COVER, CYLINDER HEAD FRONT	1	
22	11173-19F00	GASKET, CYLINDER HEAD COVER	1	
23	09106-07009	BOLT (7X17.5)	2	
24	09106-07010	BOLT (7X31)	1	
25	09161-11008	WASHER	2	
26	11192-13E00	CUSHION, HEAD COVER BOLT	1	
27	01550-10807	BOLT	1	
28	01550-10807	BOLT	1	

1 SV650 Y E3/E33

B2

FIG.2

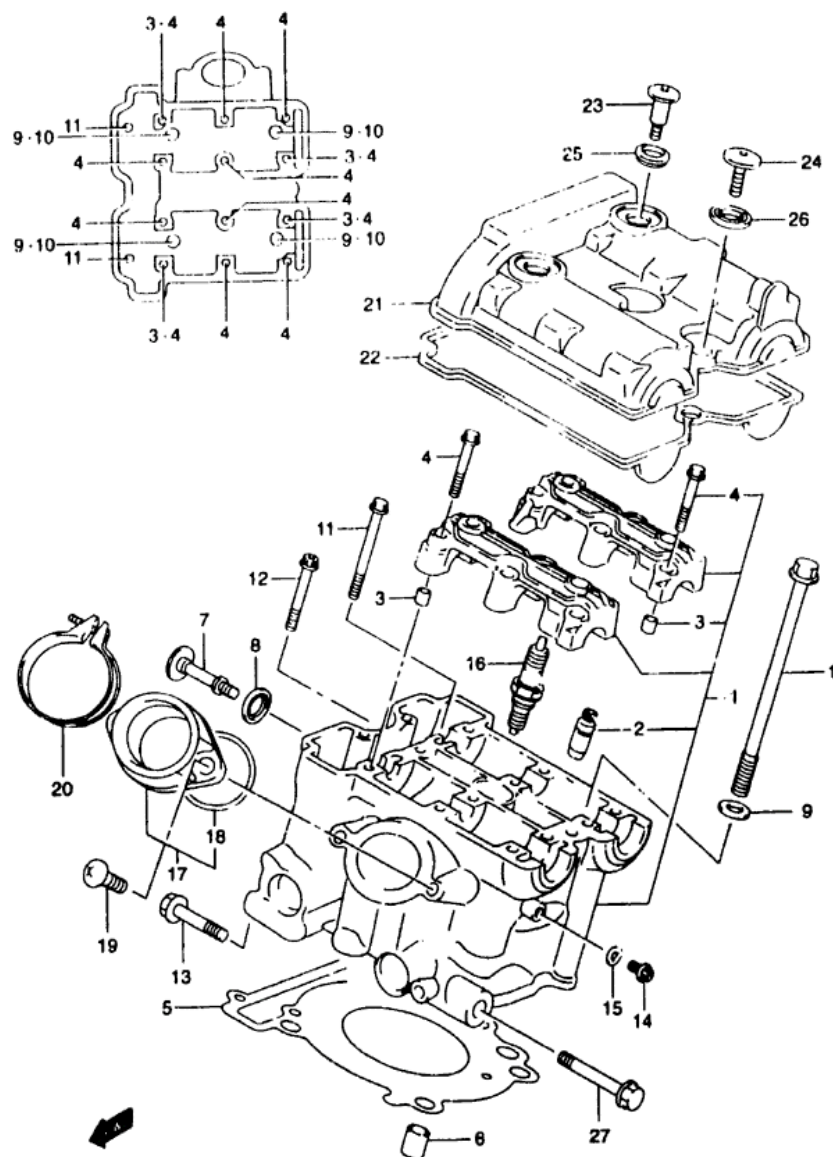


FIG 2 (B-3)

REAR CYLINDER HEAD

REF.NO.	PART NO.	DESCRIPTION	Q'TY	REMARKS
1-1	11103-20F00	HEAD ASSY, CYLINDER REAR	1	
1-2	11103-20F10	HEAD ASSY, CYLINDER REAR	1	E33
2	11115-18D72	GUIDE, VALVE	4	
3	09206-08001	PIN (6 2X8X11)	4	
4	09103-06026	BOLT (6X39)	12	
5	11141-20F00	GASKET, CYLINDER HEAD	1	
6	04211-13189	PIN	2	
7	11161-33E00	BOLT, CYLINDER HEAD SIDE FACE	1	
8	11191-13E00	WASHER, HEAD COVER	1	
9	09160-10082	WASHER (10 5X19X2 0)	4	
10	09103-10272	BOLT (10X160)	4	
11	09103-06103	BOLT (6X70)	2	
12	07120-06403	BOLT	1	
13	01550-10557	BOLT	1	
14	07120-06123	BOLT	1	
15	09166-06023	GASKET (5 8X13X1 2)	1	
16-1	09482-00456	SPARK PLUG (NGK,CR8E)	1	
16-2	09482-00457	SPARK PLUG (DENSO,U24ESR-N)	1	
16-3	09482-00458	SPARK PLUG (NGK,CR9E)	1	OPT
16-4	09482-00459	SPARK PLUG (DENSO,U27ESR-N)	1	OPT
16-5	09482-00460	SPARK PLUG (NGK,CR10E)	1	OPT
16-6	09482-00461	SPARK PLUG (DENSO,U31ESR-N)	1	OPT
17	13102-20F00	PIPE ASSY, INTAKE REAR	1	
18	09280-46006	O RING	1	
19	02122-06163	SCREW	2	
20	09402-56208	CLAMP	1	
21	11172-19F00	COVER, CYLINDER HEAD REAR	1	
22	11173-19F00	GASKET, CYLINDER HEAD COVER	1	
23	09106-07009	BOLT (7X17.5)	2	
24	09106-07010	BOLT (7X31)	1	
25	09161-11008	WASHER	2	
26	11192-13E00	CUSHION, HEAD COVER BOLT	1	
27	01550-10807	BOLT	1	

2 SV650 Y E3/E33

FIG.3

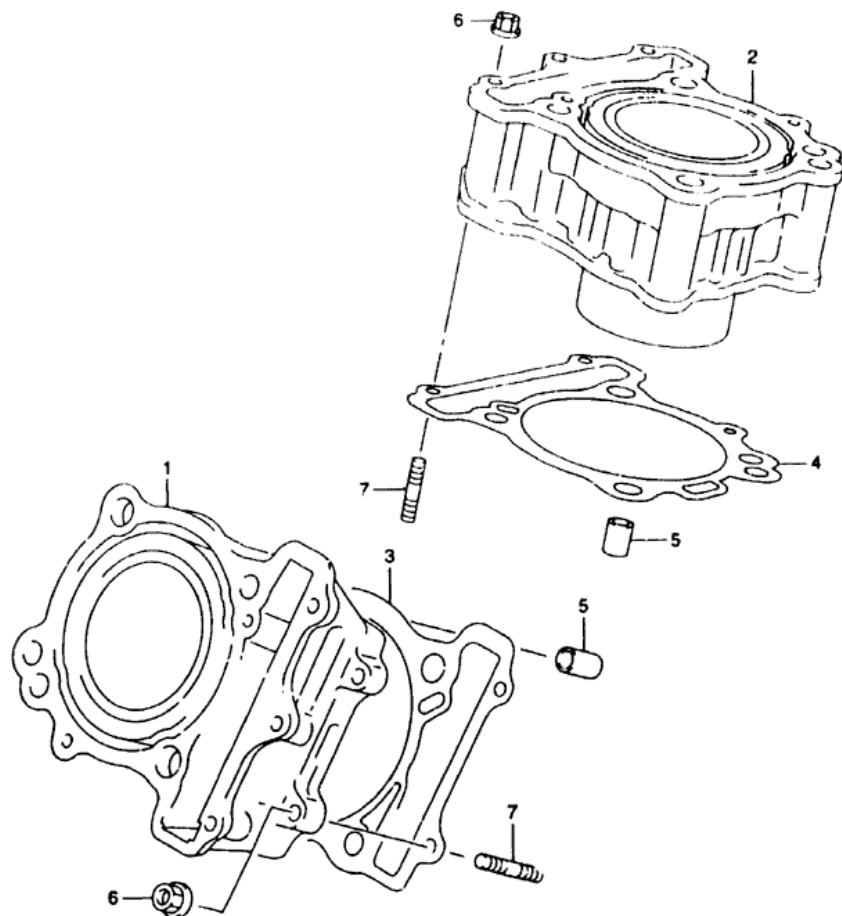


FIG.3 (B-4)

CYLINDER

REF.NO.	PART NO.	DESCRIPTION	Q'TY	REMARKS
1-1	11210-20F00-0F0	CYLINDER, FRONT	1	
1-2	11210-20F10-0F0	CYLINDER, FRONT	1	E33
2-1	11220-20F00-0F0	CYLINDER, REAR	1	
2-2	11220-20F10-0F0	CYLINDER, REAR	1	E33
3	11241-19F00	GASKET, CYLINDER FRONT	1	
4	11241-19F00	GASKET, CYLINDER REAR	1	
5	04211-13189	PIN	4	
6	08316-10063	NUT	4	
7	J1421-06253	STUD BOLT	4	

FIG.4

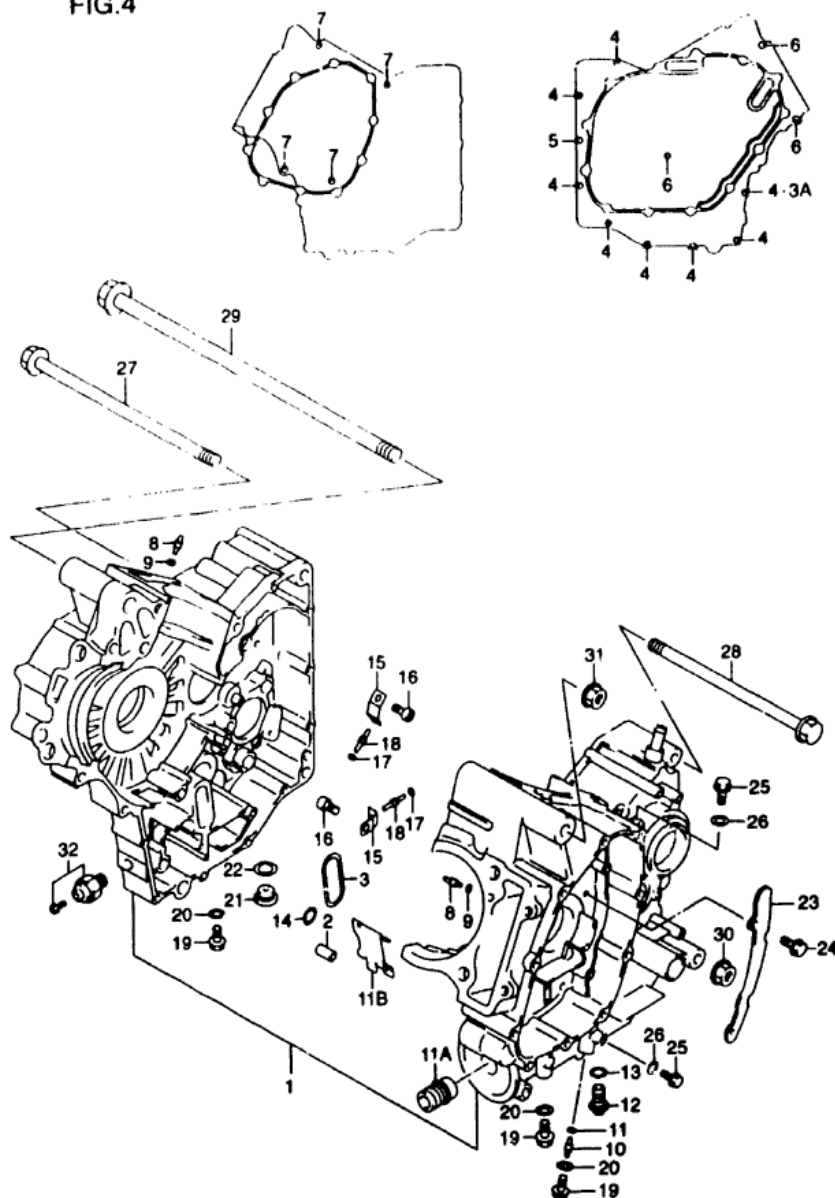


FIG 4 (B-5)

CRANKCASE

REF.NO.	PART NO.	DESCRIPTION	Q'TY	REMARKS
1-1	11301-20830	CRANKCASE SET	1	
1-2	11301-20831	CRANKCASE SET	1	E NO 111683-
1-3	11301-20840	CRANKCASE SET	1	E33
2	09206-11017	PIN (11X20)	2	
3	11315-19F00	O RING, CRANKCASE	1	
3A	09168-06023	GASKET (5.8X13X1.2)	1	E NO 111683-
4	01547-06503	BOLT	8	
5	01547-06507	BOLT	1	
6	07120-08553	BOLT	3	
7	07120-08803	BOLT	4	
8	09493-28010	JET, OIL GALLERY CYLINDER	2	
9	09280-04004	O RING (D 12 ID 4.0)	2	
10	09493-28010	JET, OIL GALLERY MISSION	1	
11	09280-04004	O RING (D 12 ID 4.0)	1	
11A	16591-06B00	UNION, OIL FILTER STAND	1	
11B	11391-20F10	PLATE, OIL	1	
12	09247-12106	PLUG (12X20)	1	
13	09168-12002	GASKET (12.1X16.2X3.7)	1	
14	09280-12009	O RING (D 19 ID 12.6)	1	
15	16438-19F00	PLATE, PISTON COOLING JET	2	
16	09106-06075	BOLT (6X12)	2	
17	09280-04004	O RING (D 12 ID 4.0)	2	
18	09493-26007	JET (130)	2	
19	01550-08123	BOLT	3	
20	09168-08029	GASKET	3	
21	09248-16012	PLUG	1	
22	09168-16002	GASKET (16X22X2)	1	

****Engine Cases and Frames for this model must be ordered on the Frame/Engine Case Order Form (99924-FC003). If you have any questions regarding these procedures, please call our Parts Coordinator before placing your order.

FIG.4

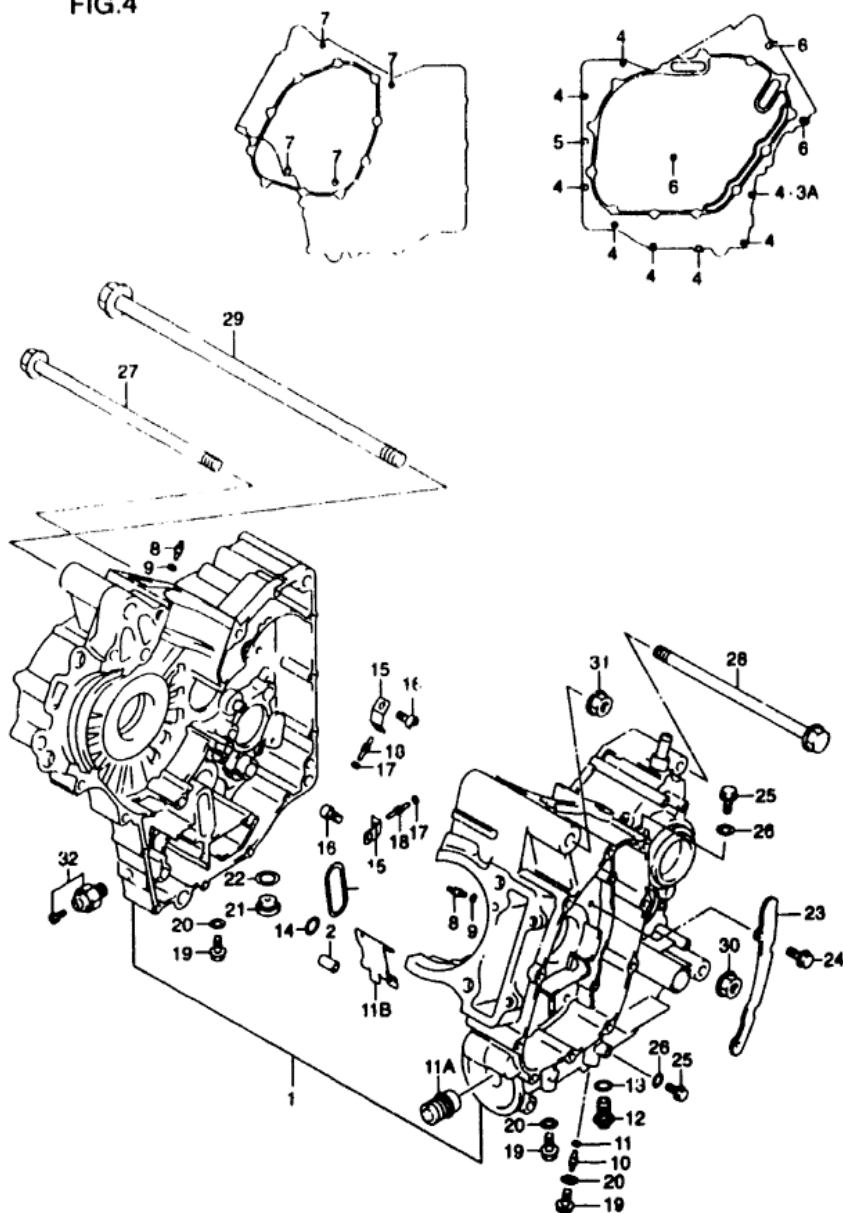


FIG 4 (B- 6)

CRANKCASE

REF.NO.	PART NO.	DESCRIPTION	Q'TY	REMARKS
23	11323-19F00	PLATE, OIL SEPARATOR	1	
24	01547-06123	BOLT	2	
25	01550-06123	BOLT	2	
26	09168-06023	GASKET (5.8X13X1.2)	2	
27	09103-10226	BOLT (10X260)	1	
28	09103-10041	BOLT (10X215)	1	
29	09103-12054	BOLT (12X310)	1	
30	08319-31107	NUT	1	
31	08319-31128	NUT	1	
32	37820-33D00	SWITCH ASSY. OIL PRESSURE	1	

FIG.5

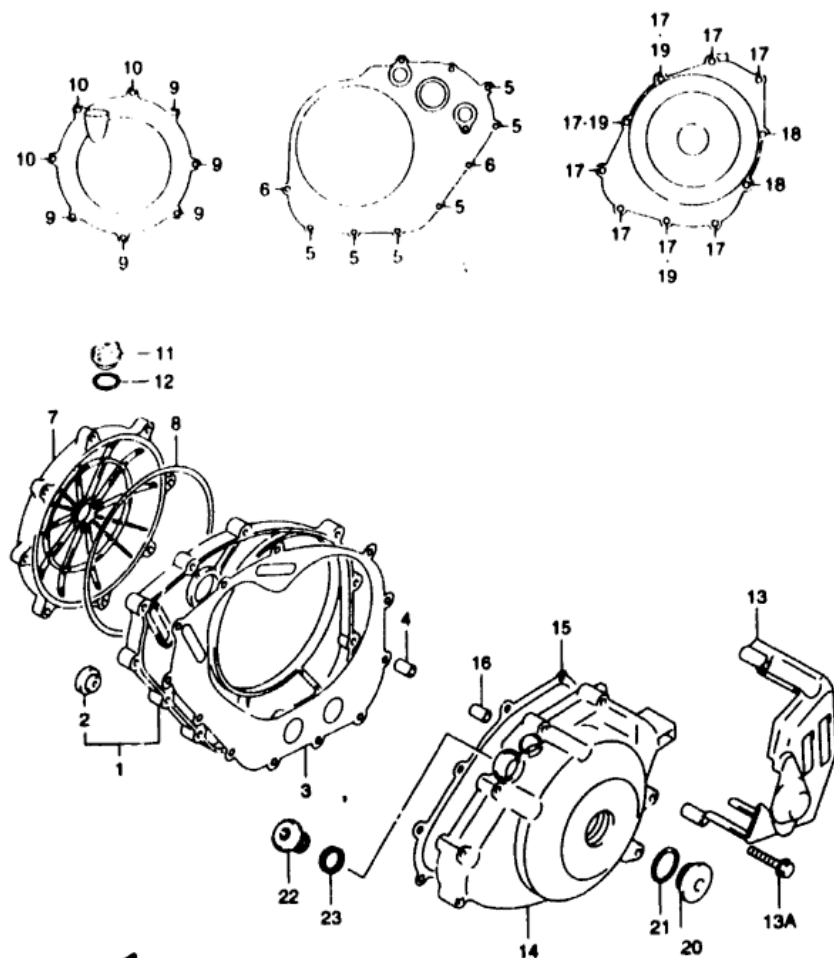


FIG 5 (B-7)

CRANKCASE COVER

REF.NO.	PART NO.	DESCRIPTION	Q'TY	REMARKS
1	11340-19F00	COVER, CLUTCH INNER	1	
2	11971-33210	LENS, OIL LEVEL CHECK	1	
3	11482-19F00	GASKET, CLUTCH COVER INNER	1	
4	04211-09149	PIN	2	
5	09103-06204	BOLT	6	
6	09103-06205	BOLT	2	
7	11370-19F00	COVER, CLUTCH OUTER	1	
8	11484-19F00	O RING, CLUTCH COVER OUTER	1	
9	09103-06180	BOLT	5	
10	09103-06207	BOLT	3	
11	09259-20008	PLUG	1	
12	09280-17003	O RING (D 31 ID 16.8)	1	
13	11361-19F00	COVER, ENGINE SPROCKET	1	
13A	01547-06457	BOLT	3	
14	11351-19F00	COVER, MAGNET	1	
15	11483-19F00	GASKET, MAGNET COVER	1	
16	04211-09149	PIN	2	
17	01547-06357	BOLT	8	
18	01547-06657	BOLT	2	
19-1	09168-06023	GASKET (5.8X13X1.2)	1	
19-2	09168-06023	GASKET (5.8X13X1.2)	3	E NO 111683-
20	09259-26012	PLUG	1	
21	09280-22008	O RING (D 31 ID 22.7)	1	
22	09248-16012	PLUG	1	
23	09168-16002	GASKET (13.8X18.8X0.4)	1	

FIG.6

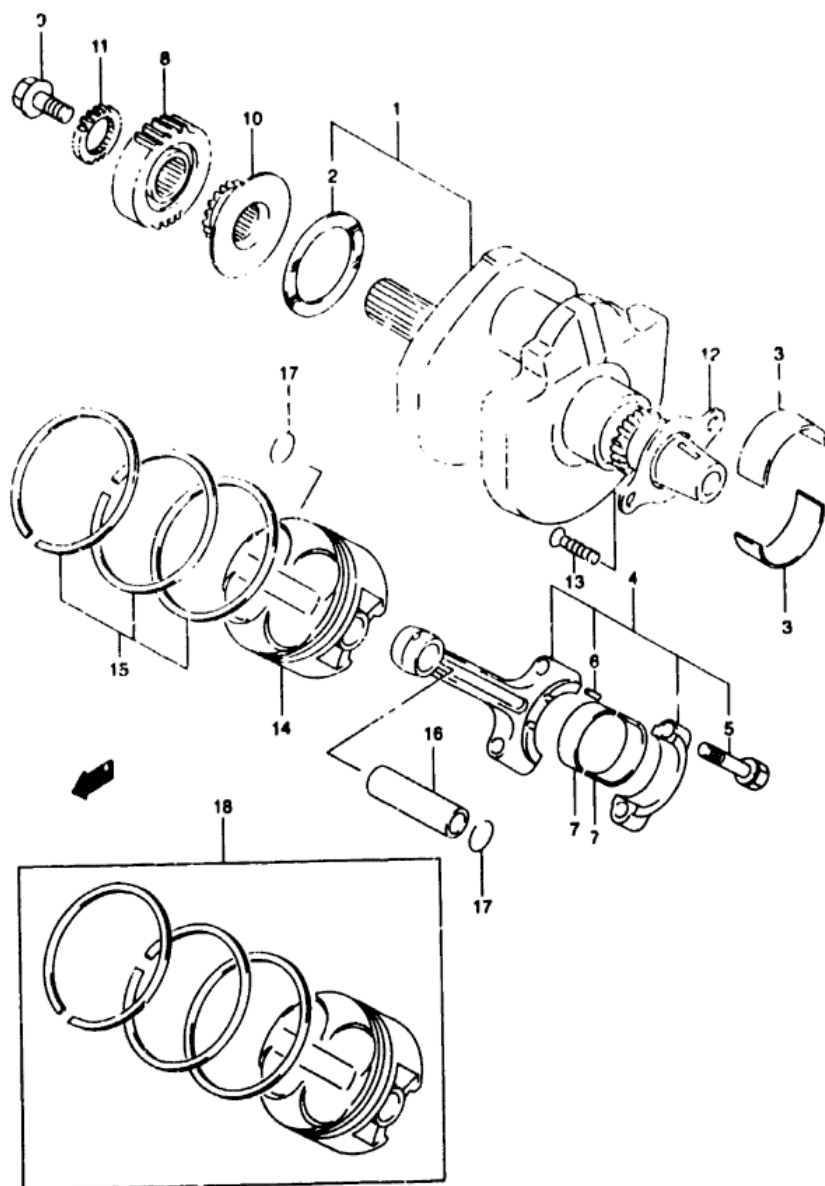


FIG.6 (B-8), CRANKSHAFT

REF.NO.	PART NO.	DESCRIPTION	Q'TY	REMARKS
1	12000-20840	CRANKSHAFT SET	1	
2-1	12728-19F00-0A1	WASHER, THRUST (T 1 925)	1	
2-2	12228-19F00-0B0	WASHER, THRUST (T 1 95)	1	
2-3	12228-19F00-0C0	WASHER, THRUST (T 1 975)	1	
2-4	12228-19F00-0D0	WASHER, THRUST (T 2 0)	1	
2-5	12228-19F00-0E0	WASHER, THRUST (T 2 025)	1	
2-6	12228-19F00-0F0	WASHER, THRUST (T 2 05)	1	
2-7	12228-19F00-0G0	WASHER, THRUST (T 2 075)	1	
2-8	12228-19F00-0H0	WASHER, THRUST (T 2 1)	1	
2-9	12228-19F00-0I0	WASHER, THRUST (T 2 125)	1	
2-10	12228-19F00-0J0	WASHER, THRUST (T 2 15)	1	
3-1	12229-19F10-0A0	BEARING, CRANKSHAFT	4	SEE
3-2	12229-19F10-0B0	BEARING, CRANKSHAFT	4	NOTE
3-3	12229-19F10-0C0	BEARING, CRANKSHAFT	4	BELOW
4	12160-20F00	CONNECTING ROD ASSY	2	
5	12163-17C50	BOLT, CONNECTING ROD	4	
6	12165-27A50	PIN, CONNECTING ROD	4	
7-1	12164-46E01-0A0	BEARING, CRANK PIN	4	SEE
7-2	12164-46E01-0B0	BEARING, CRANK PIN	4	NOTE
7-3	12164-46E01-0C0	BEARING, CRANK PIN	4	BELOW
7-4	12164-46E01-0D0	BEARING, CRANK PIN	4	
8	21111-20F00	GEAR, PRIMARY DRIVE		
9	21112-19F00	BOLT, PRIMARY DRIVE GEAR		
10	12731-19F00	SPROCKET, CAM CHAIN DRIVE	1	
11	17451-19F00	GEAR, WATER PUMP DRIVE	1	
12	12541-20F00	RETAINER, CRANKSHAFT BRG LH	1	
13	09126-06011	SCREW	2	
14	12111-20F00-0F0	PISTON	2	
15	12140-20F00	RING SET, PISTON	2	
16	12151-05A00	PIN, PISTON	2	
17	09381-20004	CIRCLIP	4	
18-1	12100-20F00-050	PISTON SET (OS.0 5)	2	OPT
18-2	12100-20F00-100	PISTON SET (OS.1 0)	2	OPT

NOTE:

THERE IS A BEARING KIT
AVAILABLE FOR THIS MODEL
SV650 X (1999)
PART # 99104-BRGKT-020
REFER TO PARTS BULLETIN
431-92-02 FOR EXPLANATION

7 SV650 Y E3/E33

FIG.7

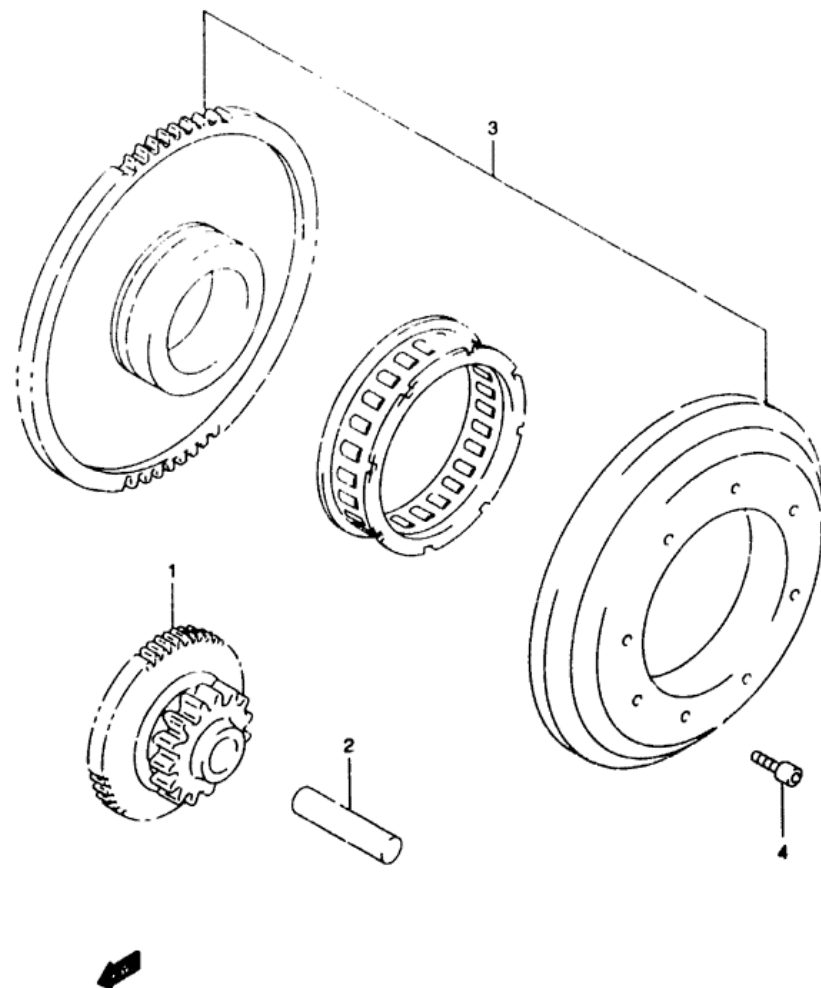


FIG 7 (C-2)

STARTER CLUTCH

REF.NO.	PART NO.	DESCRIPTION	Q'TY	REMARKS
1	12611-20F01	GEAR, STARTER IDLE	1	
2	09206-12001	PIN	1	
3	12600-20840	CLUTCH SET, STARTER	1	
4	07130-08163	BOLT	6	

8 SV650 Y E3/E33

C2

AIR CLEANER..... C-08	CRANKCASE COVER.... E-07	FRONT BRAKE HOSE... I-07	GEAR SHIFTING.... D-12	OPTIONAL..... J-07	REAR WHEEL..... J-04	TRANSMISSION..... D-10
BATTERY..... E-04	CRANKCASE..... E-06	FRONT CALIPER..... I-06	CLAMP BAR..... D-07	RADIATOR HOSE..... D-07	SEAT TAIL COVER.... H-11	TURNSIGNAL LAMP.... F-06

FIG.8

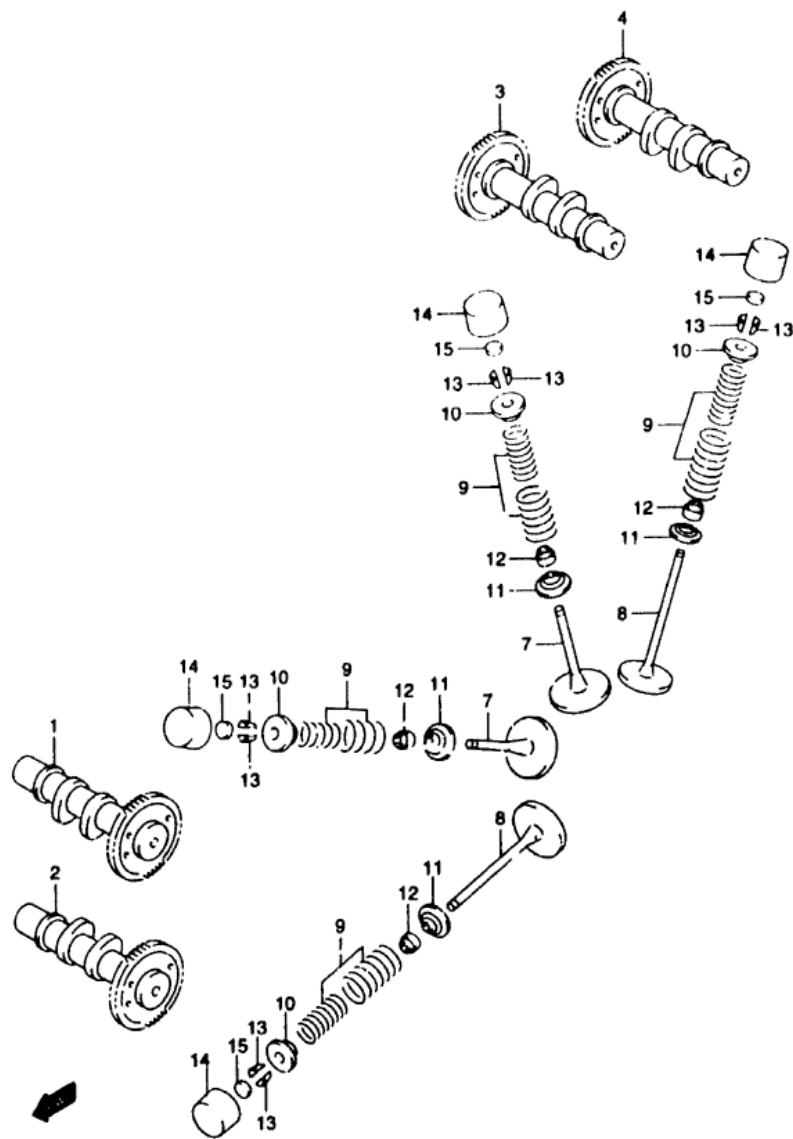


FIG.8 (C-3)

CAM SHAFT / VALVE

REF.NO.	PART NO.	DESCRIPTION	Q'TY	REMARKS
1	12710-20F00	CAM SHAFT, INTAKE FRONT	1	
2	12720-20F00	CAM SHAFT, EXHAUST FRONT	1	
3	12730-20F00	CAM SHAFT, INTAKE REAR	1	
4	12740-20F00	CAM SHAFT, EXHAUST REAR	1	
5	12800-05820	SHIM SET, TAPPET	1	OPT NO1 SHOWN
6	99000-69491	CASE, TAPPET SHIM	1	
7	12911-46E00	VALVE, INTAKE	4	
8	12912-20F00	VALVE, EXHAUST	4	
9	12920-33E10	SPRING SET, VALVE	8	
10	12931-33E10	RETAINER, VALVE SPRING	8	
11	12933-39E00	SEAT, VALVE SPRING	8	
12	09289-04002	OIL SEAL (4.5X10X8)	8	
13	12932-17E50	LOTTER, VALVE	15	
14	12891-17E00	TAPPET	8	
15-1	12892-05C00-120	SHIM, TAPPET (T.1.20)	8	
15-2	12892-05C00-125	SHIM, TAPPET (T.1.25)	8	
15-3	12892-05C00-130	SHIM, TAPPET (T.1.30)	8	
15-4	12892-05C00-135	SHIM, TAPPET (T.1.35)	8	
15-5	12892-05C00-140	SHIM, TAPPET (T.1.40)	8	
15-6	12892-05C00-145	SHIM, TAPPET (T.1.45)	8	
15-7	12892-05C00-150	SHIM, TAPPET (T.1.50)	8	
15-8	12892-05C00-155	SHIM, TAPPET (T.1.55)	8	
15-9	12892-05C00-160	SHIM, TAPPET (T.1.60)	8	
15-10	12892-05C00-165	SHIM, TAPPET (T.1.65)	8	
15-11	12892-05C00-170	SHIM, TAPPET (T.1.70)	8	
15-12	12892-05C00-175	SHIM, TAPPET (T.1.75)	8	
15-13	12892-05C00-180	SHIM, TAPPET (T.1.80)	8	
15-14	12892-05C00-185	SHIM, TAPPET (T.1.85)	8	
15-15	12892-05C00-190	SHIM, TAPPET (T.1.90)	8	
15-16	12892-05C00-195	SHIM, TAPPET (T.1.95)	8	
15-17	12892-05C00-200	SHIM, TAPPET (T.2.00)	8	
15-18	12892-05C00-205	SHIM, TAPPET (T.2.05)	8	
15-19	12892-05C00-210	SHIM, TAPPET (T.2.10)	8	
15-20	12892-05C00-215	SHIM, TAPPET (T.2.15)	8	
15-21	12892-05C00-220	SHIM, TAPPET (T.2.20)	8	

FIG.9

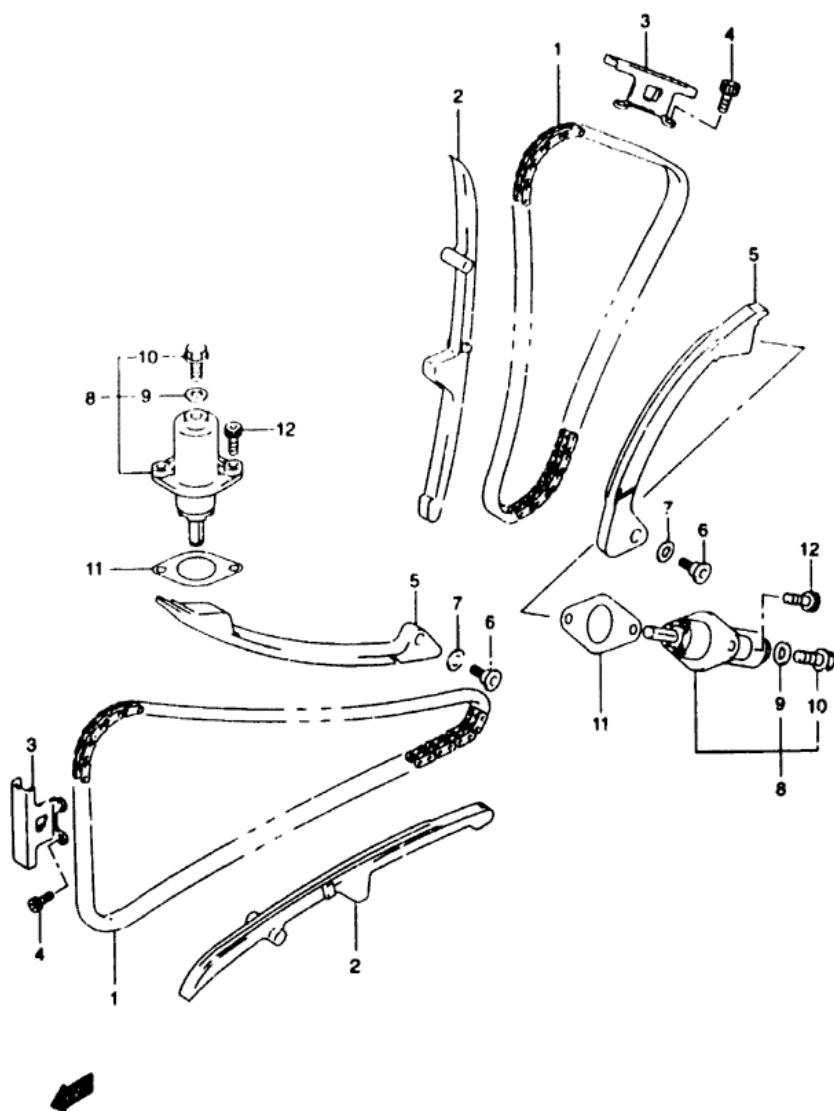


FIG.9 (C-4)

CAM CHAIN

Q'TY

REF.NO.	PART NO.	DESCRIPTION	REMARKS
1	12760-19F00	CHAIN, CAM SHAFT DRIVE	2
2	12771-19F00	GUIDE, CAM CHAIN NO 1	2
3	12782-19F00	GUIDE, CAM CHAIN NO 2	2
4	07130-06123	BOLT	6
5	12811-19F00	TENSIONER, CAM CHAIN	2
6	12812-35C00	BOLT, CAM CHAIN TENSIONER	2
7	08211-06181	WASHER	2
8	12830-19F10	ADJUSTER ASSY. TENSIONER	2
9	12837-33E00	GASKET, TENSIONER ADJUSTER	2
10	12834-33E00	PLUG, TENSIONER ADJUSTER	2
11	12837-24A10	GASKET TENSIONER ADJUSTER	2
12	07130-06253	BOLT	4

FIG.10

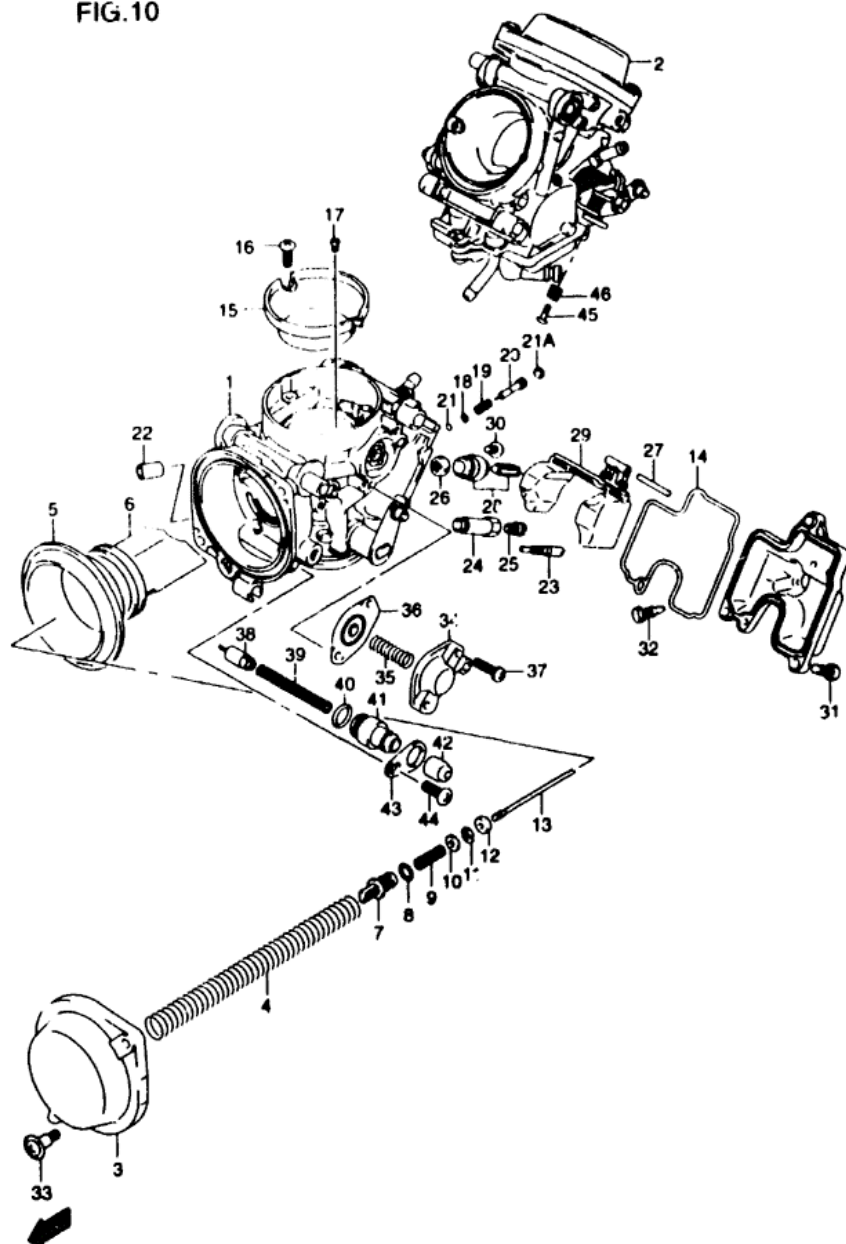


FIG 10 (C-5)

CARBURETOR

REF.NO.	PART NO.	DESCRIPTION	Q'TY	REMARKS
1-1	13201-20F20	CARBURETOR ASSY. FRONT	1	
1-2	13201-20F40	CARBURETOR ASSY. FRONT	1	E33
2-1	13202-20F20	CARBURETOR ASSY. REAR	1	
2-2	13202-20F40	CARBURETOR ASSY. REAR	1	E33
3	13502-07F00	COVER ASSY. DIAPHRAGM	2	
4	13481-19F00	SPRING	2	
5	13507-33E00	DIAPHRAGM	2	
6	13501-33E00	VALVE PISTON	2	
7	13418-33E00	HOLDER	2	
8	09280-05004	O RING (D 19 ID 4 8)	2	
9	13481-33E00	SPRING	2	
10	13382-44030	WASHER	2	
11	13394-17E60	E RING	2	
12	13387-33E00	RING	2	
13-1	13383-20F30	NEEDLE JET (6E42-54-1)	2	
13-2	13383-20F40	NEEDLE JET (6E43-54-1)	2	E33
14	13258-33E00	O RING	2	
15	13667-20F00	FUNNEL	2	
16	02112-04123	SCREW	4	
17-1	09493-32007	JET, PILOT AIR (160)	2	
17-2	09492-30013	JET, PILOT AIR (150)	2	E33
18	13291-29900	WASHER	2	
19	13268-48700	SPRING	2	
20	13279-19F10	ADJUSTER (2 3/4)	2	
21	13295-29900	O RING	2	
21A	13281-05A00	PLUG	2	
22	13508-17C00	CAP	1	FRONT
23	09492-15017	JET, PILOT (15)	2	
24	13385-33E00	HOLDER, JET	2	
25	09491-27014	JET, MAIN (137 5)	2	

FIG.10

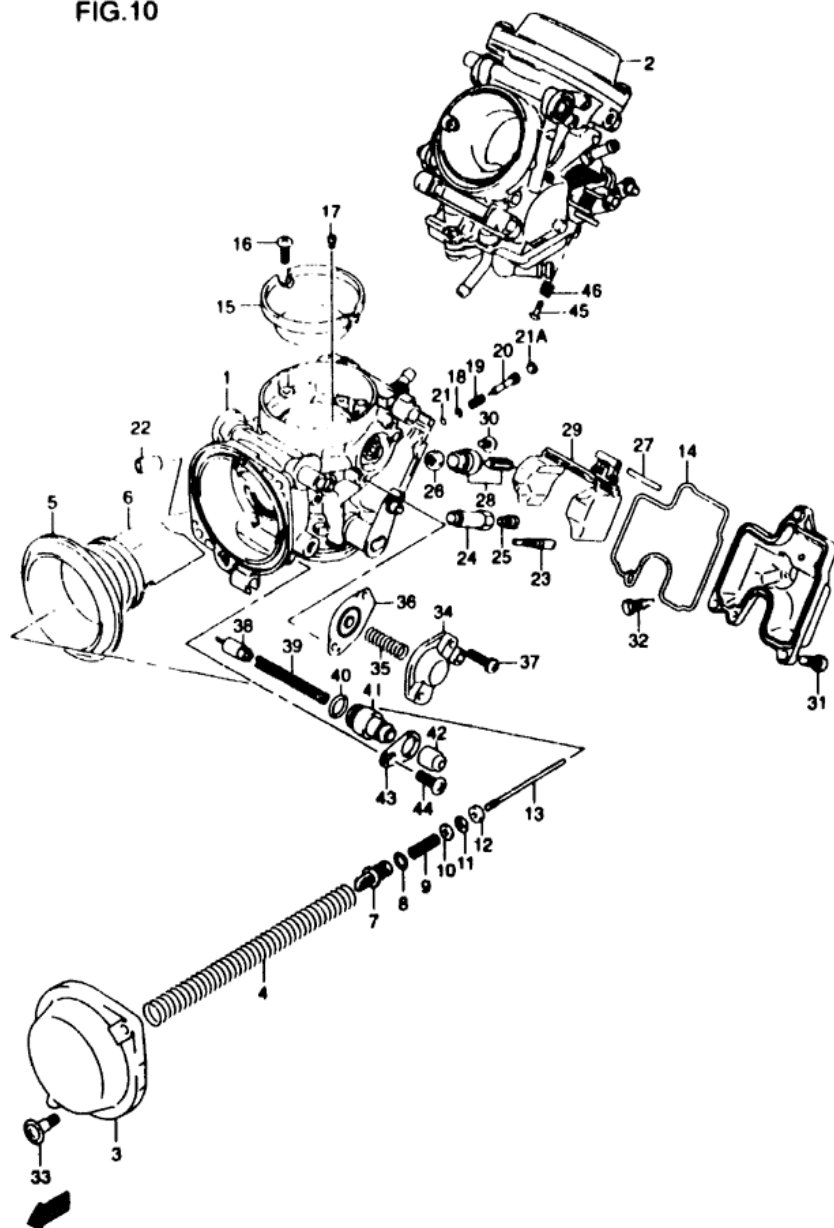


FIG 10 (C-6)

CARBURETOR

REF.NO.	PART NO.	DESCRIPTION	Q'TY	REMARKS
26	13376-19F00	FILTER	2	
27	13254-92910	FLOAT PIN	2	
28	13370-20F00	VALVE ASSY. NEEDLE	2	
29	13250-33E00	FLOAT ASSY	2	
30	13602-05A10	SCREW	2	
31	02112-05127	SCREW	6	
32	13247-13A00	SCREW DRAIN	2	
33	13247-33E00	SCREW	4	
34	13502-10F00	COVER ASSY	2	
35	13417-19F00	SPRING	2	
36	13480-10F00	DIAPHRAGM ASSY	2	
37	13601-04148	SCREW	4	
38	13411-01400	PLUNGER STARTER	2	
39	13417-07F00	SPRING	2	
40	13278-18E20	O RING	2	
41	13418-19F00	HOLDER GUIDE	2	
42	13681-04010	CAP CARBURETOR	2	
43	13421-19F00	PLATE	2	
44	13601-05148	SCREW	2	
45	13267-44B00	SCREW	1	REAR
46	13271-44B00	SPRING	1	REAR

FIG.11

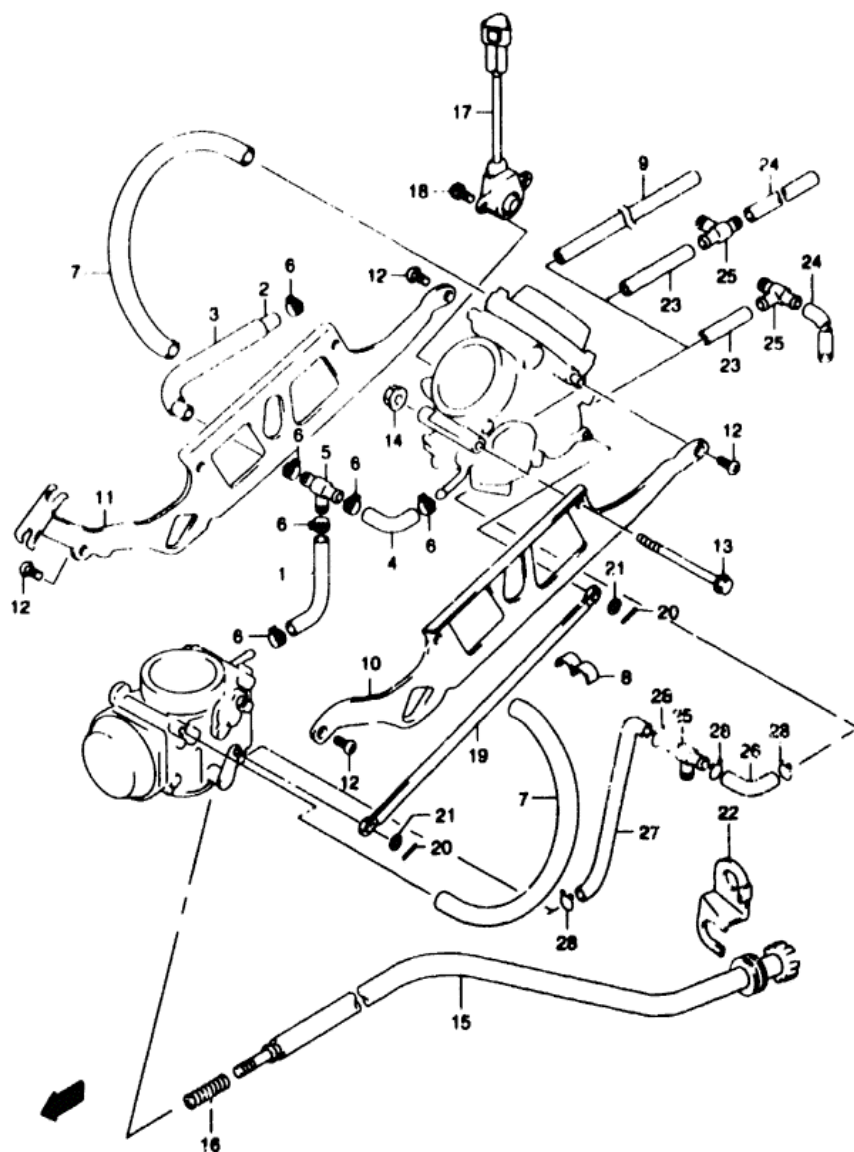


FIG 11 (C-7)

CARBURETOR FITTINGS

REF.NO.	PART NO.	DESCRIPTION	Q'TY	REMARKS
1	13684-48B10	HOSE	1	
2	13684-19F00	HOSE (5 3X10 5X125)	1	
3	13684-19F10	HOSE (11X15X90)	1	
4	13684-19F20	HOSE (5 3X10 5)	1	
5	13685-48B00	NIPPLE	1	
6	13671-19F00	CLIP	6	
7	13686-19F00	HOSE (7X11X250)	2	
8	13671-19F10	CLIP	1	
9	09352-50903-600	HOSE (5X9X100)	1	E3 E28 L 600 →175
10	13482-20F00	PLATE	1	
11	13447-20F00	PLATE	1	
12	13602-05109	SCREW	4	
13	13612-19F00	BOLT	2	
14	13324-19F00	NUT	2	
15	13267-19F00	ADJUST SCREW ASS.	1	
16	13271-33C00	SPRING	1	
17	13580-19F00	SENSOR ASSY	1	
18	13602-19B50	SCREW	2	
19	13553-19F00	LEVER ASSY	1	
20	13563-19F00	PIN	2	
21	13615-45010	WASHER	2	
22	13279-19F00	PLATE, IDLE ADJUST	1	
23-1	13683-10D20	HOSE (5X9X60)	1	E33
23-2	13684-20F30	HOSE (5X9X40)	1	E33
24	09352-50901-600	HOSE (5X9X600)	1	E33 L 600 →125
25	13685-48B00	NIPPLE	2	E33
26	13684-19F20	HOSE (5 3X10 5)	1	E33
27	13687-20F40	HOSE (5 3X10 5)	1	E33
28	09401-10410	CLIP	4	E33

13 SV650 Y E3/E33

C7

AIR CLEANER.....	C-08	CRANKCASE COVER....	B-07	FRONT BRAKE HOSE....	I-07	GEAR SHIFTING.....	D-12	OPTIONAL.....	J-07	REAR WHEEL.....	J-04	TRANSMISSION.....	D-10
BATTERY.....	E-04	CRANKCASE.....	B-05	FRONT CALIPER.....	I-06	HANDLE BAR.....	H-02	RADIATOR HOSE.....	D-07	SEAT TAIL COVER...	H-11	TURNSIGNAL LAMP....	F-04
CAM CHAIN.....	C-04	CRANKSHAFT.....	B-08	FRONT CYLINDER HEAD	B-02	HANDLE COVER.....	H-04	RADIATOR.....	D-04	SEAT.....	H-10	WARNING LABEL.....	H-09
CAM SHAFT / VALVE..	C-03	CYLINDER.....	B-04	FRONT FENDER.....	G-11	HANDLE SWITCH.....	F-11	REAR CALIPER.....	J-05	SPEEDOMETER.....	F-07	WATER PUMP.....	D-04
CARBURETOR FITTINGS	C-07	ELECTRICAL.....	F-04	FRONT FORK DAMPER..	T-02	HEADLAMP MOUNTING..	G-10	REAR CLUTCH LEVER..	J-03	STAND.....	G-03	WIRING HARNESS.....	F-09

FIG.12

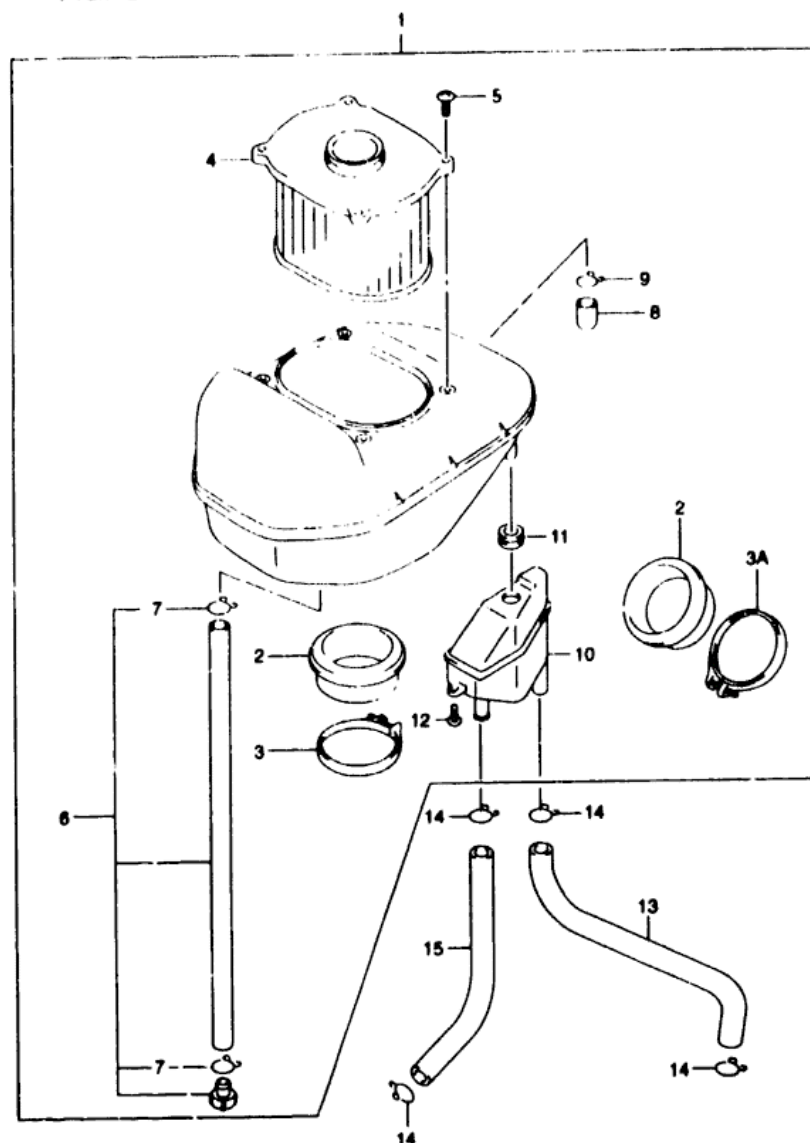


FIG 12 (C-8)

AIR CLEANER

REF.NO.	PART NO.	DESCRIPTION	Q'TY	REMARKS
1-1	13700-20F00	CLEANER ASSY. AIR	1	
1-2	13700-20F10	CLEANER ASSY. AIR	1	E33
2	13881-20F00	TUBE, OUTLET	2	
3	13170-20F10	CLAMP, OUTLET TUBE FRONT	1	
3A	13170-20F00	CLAMP, OUTLET TUBE REAR	1	
4	13780-20F00	FILTER, AIR CLEANER	1	
5	02142-05203	SCREW	4	
6-1	13870-19F00	TUBE, DRAIN	1	
6-2	13870-20F10	TUBE, DRAIN	1	E33
7	09401-14301	CLIP	2	
8	13859-41B10	PLUG	1	EXCEPT E33
9	09401-14301	CLIP	1	EXCEPT E33
10	13840-20F00	TANK, OIL RETURN	1	
11	09308-13001	GROMMET	1	
12	03142-05163	SCREW	2	
13	13851-20F00	TUBE, BREATHER CRANKCASE	1	
14	09401-15101	CLIP	4	
15	09355-11165-600	TUBE, BREATHER CYLINDER (11X16X600)	1	L 600 +220

14 SV650 Y E3/E33

C8

AIR CLEANER.....	C-08	CRANKCASE COVER....	B-07	FRONT BRAKE HOSE....	1-07	GEAR SHIFTING.....	D-12	OPTIONAL.....	J-07	REAR WHEEL.....	J-04	TRANSMISSION.....	D-10
BATTERY.....	E-04	CRANKCASE.....	B-05	FRONT CALIPER.....	1-04	HANDLE BAR.....	H-02	RADIATOR HOSE.....	J-07	SEAT TAIL COVER....	H-11	TURN SIGNAL LAMP....	F-06
CAM CHAIN.....	C-04	CRANKSHAFT.....	B-08	FRONT CYLINDER HEAD	B-02	HANDLE LEVER.....	P-04	RADIATOR.....	J-04	SHOCK absorber.....	H-10	WARNING LABEL.....	H-09
CAM SHAFT / VALVE..	C-03	CYLINDER.....	B-04	FRONT FENDER.....	G-11	HANDLE SWITCH.....	F-11	REAR CALIPER.....	J-05	SPARK PLUG.....	F-02	WATER PUMP.....	D-04
								REAR CYLINDER HEAD..	J-08	WAX.....	C-03	WAX.....	C-03

FIG.13

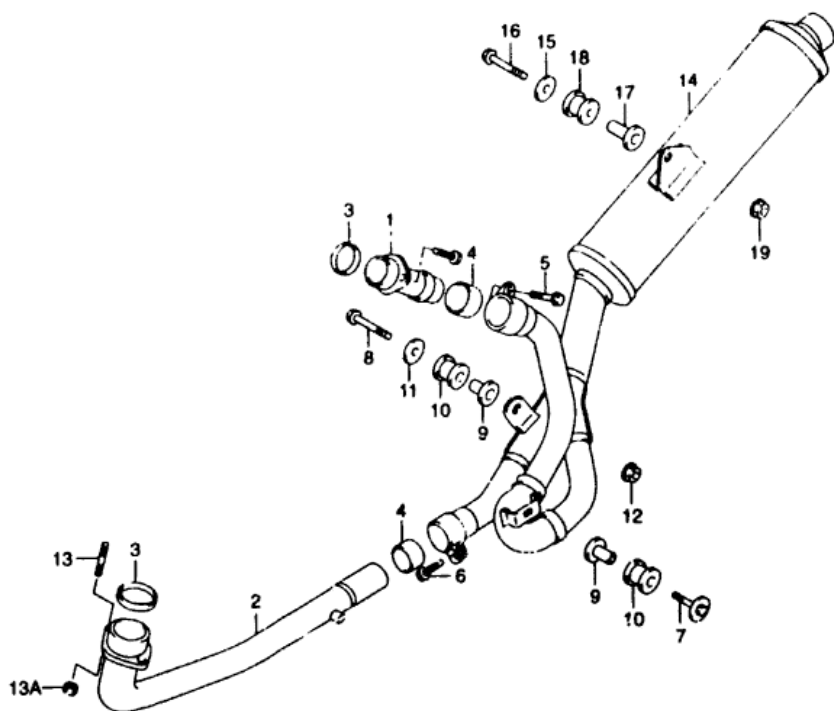


FIG 13 (D-2)

MUFFLER

REF.NO.	PART NO.	DESCRIPTION	Q'TY	REMARKS
1	14150-19F00	PIPE, EXHAUST REAR	1	
2	14160-19F10	PIPE, EXHAUST FRONT	1	
3	14181-22D01	GASKET, EXHAUST PIPE	2	
4	14771-32E00	CONNECTOR, MUFFLER	2	
5	07120-08403	BOLT	1	
6	07120-08403	BOLT	1	
7	09118-08068	BOLT (8X40)	1	
8	01550-08457	BOLT	1	
9	09180-08152	SPACER (8 6X17X24 2)	2	
10	09320-12048	CUSHION	2	
11	09160-08138	WASHER (8 5X30X2 3)	1	
12	08361-25088	NUT	1	
13	01421-08253	BOLT, STUD (8X25)	4	
13A	08315-31087	NUT	4	
14	11305-19F11-H01	MUFFLER	1	
15	09160-08140	WASHER (8 5X33X2 6)	1	
16	01550-08457	BOLT	1	
17	09180-08156	SPACER (8 6X12X25 5)	1	
18	09320-12049	CUSHION	1	
19	08361-25088	NUT	1	

15 SV650 Y E3/E33

D 2

AIR CLEANER.....	C-08	CRANKCASE COVER....	B-07	FRONT BRAKE HOSE...	I-07	GEAR SHIFTING.....	D-12	OPTIONAL.....	J-07	REAR WHEEL.....	J-04	TRANSMISSION.....	D-10
BATTERY.....	E-04	CRANKCASE.....	B-05	FRONT CALIPER.....	I-06	HANDLE BAR.....	H-02	RADIATOR HOSE.....	D-07	SEAT TAIL COVER....	H-11	TURN SIGNAL LAMP....	F-06
CAN CHAIN.....	C-04	CRANKSHAFT.....	B-08	FRONT CYLINDER HEAD	B-02	HANDLE LEVER.....	H-04	RADIATOR.....	D-06	SEAT.....	H-10	WARNING LABEL.....	H-09
CAN SHAFT / VALVE..	C-03	CYLINDER.....	B-06	FRONT FENDER.....	G-11	HANDLE SWITCH.....	F-11	REAR CALIPER.....	J-05	SPEEDOMETER.....	F-02	WATER PUMP.....	D-04
CARBURETOR FITTINGS	C-07	ELECTRICAL.....	E-05	FRONT FORK DAMPER..	I-02	HEAD LAMP HOUSING..	G-10	REAR CUSHION LEVER.	J-03	STAND.....	G-03	WIRING HARNESS....	F-09

FIG.14

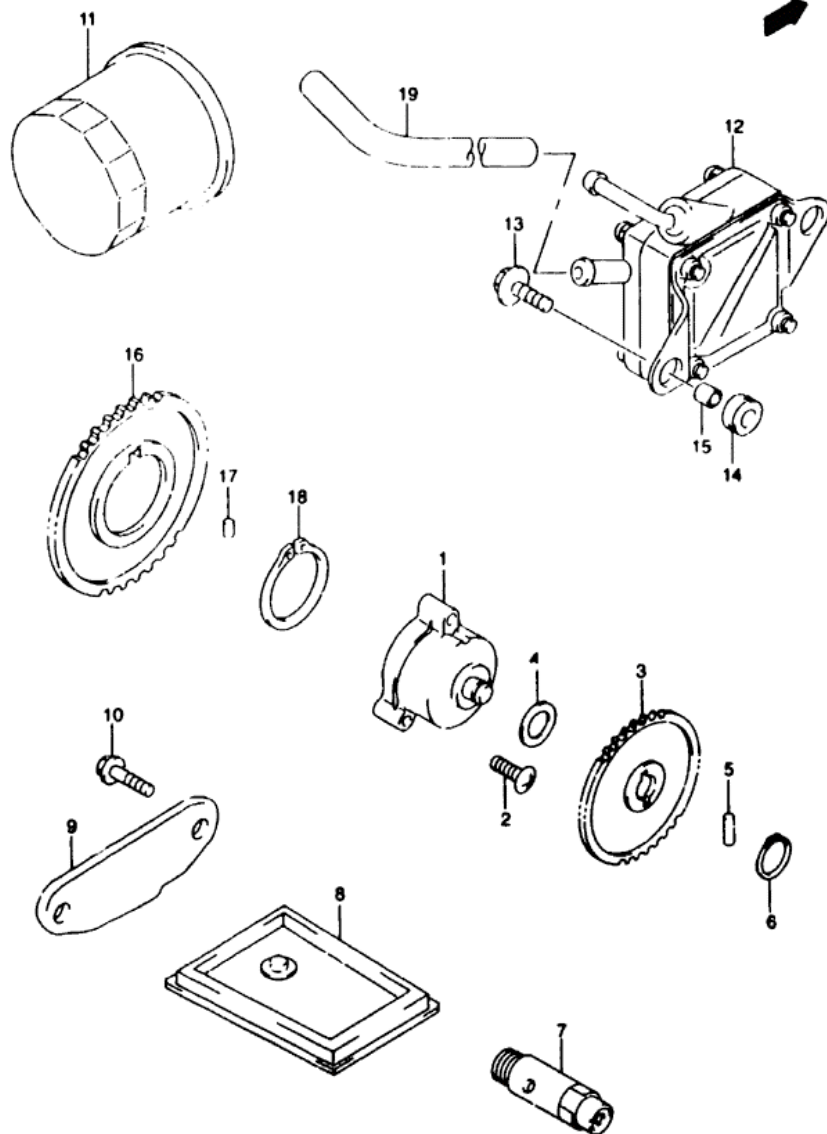


FIG.14 (D-3)

OIL PUMP / FUEL PUMP

REF.NO.	PART NO.	DESCRIPTION	Q'TY	REMARKS
1	16400-20F00	PUMP ASSY. ENGINE OIL	1	
2	02112-06253	SCREW	3	
3	16331-48E00	GEAR, OIL PUMP DRIVEN (NT 34)	1	
4	09181-10158	SHIM	1	
5	09261-04009	PIN (4X15.8)	1	
6	08331-31106	CIRCLIP	1	
7	16440-17C20	VALVE ASSY. OIL RELIEF	1	
8	16520-32E00	STRAINER ENGINE OIL	1	
9	16523-48E00	CAP OIL STRAINER	1	
10	01547-06123	BOLT	2	
11	16510-34E00	FILTER ASSY. ENGINE OIL	1	
12	15100 19F00	PUMP ASSY. FL	1	
13	09116-06115	BOLT FUEL PUMP	2	
14	09320-09U36	CUSHION FUEL PUMP	2	
15	09180-06257	SPACER FUEL PUMP	2	
16	16321-19F00	GEAR ENGINE OIL PUMP DRIVE	1	
17	09261-06002	ROLLER (OD 6 L 6)	1	
18	08331-31383	CIRCLIP	1	
19	09355-50105-600	HOSE, VACUUM	1	L 600 +150

16 SV650 Y E3/E33

D3

AIR CLEANER.....	C-08	CRANKCASE COVER....	B-07	FRONT BRAKE HOSE...	I-07	GEAR SHIFTING.....	D-12	OPTIONAL.....	J-07	REAR WHEEL.....	J-04	TRANSMISSION.....	D-10
BATTERY.....	E-04	CRANKCASE.....	B-05	FRONT CALIPER.....	I-06	HANDLE BAR.....	H-02	RADIATOR HOSE.....	D-07	SEAT TAIL COVER....	H-11	TURNSIGNAL LAMP...	F-06

FIG.15

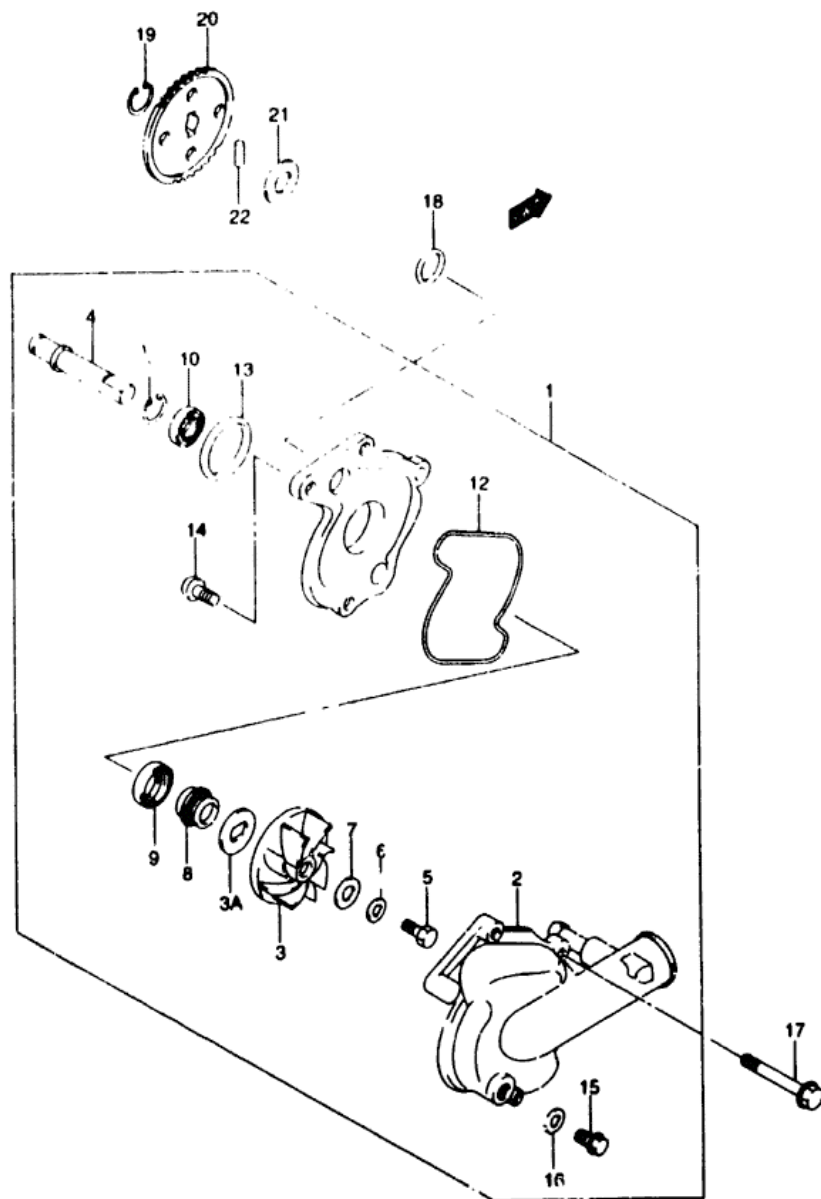


FIG.15 (D-4)

WATER PUMP (MODEL X)

REF.NO.	PART NO.	DESCRIPTION	Q'TY	REMARKS
1	17400-19F02	PUMP ASSY. WATER	1	
2	17411-19F00	CASE, WATER PUMP	1	
3	17491-19F01	IMPELLER, WATER PUMP	1	
3A	17533-02F00	WASHER, IMPELLER	1	
4	17511-19F00	SHAFT, WATER PUMP	1	
5	09100-06162	BOLT (6X13)	1	
6	09164-06006	LOCK WASHER	1	
7	09168-06025	GASKET (6X15X2.2)	1	
8	17470-02F10	SEAL, MECHANICAL	1	
9	09283-10004	OIL SEAL (10X21X5)	1	
10	09262-10014	BEARING (10X26X8)	1	
11	08332-11086	E RING	1	
12	17418-19F00	O RING	1	
13	17435-33400	O RING	1	
14	02112-06163	SCREW	2	
15	17415-14300	BOLT DRAIN	1	
16	09168-08008	GASKET (8.2X14X1)	1	
17	09103-06206	BOLT	3	
18	09280-22001	O RING (ID 24 ID 21.8)	2	
19	08331-31106	CIRCLIP	1	
20	17461-19F00	GEAR, WATER PUMP DRIVEN	1	
21	09181-10159	SHIM	1	
22	09261-04002	ROLLER	1	

REFER TO FIG 15A(D-5) FOR MODEL Y

17 SV650 Y E3/E33

D4

AIR CLEANER..... C-28	CRANKCASE COVER.... B-07	FRONT BRAKE HOSE..... I-07	GEAR SHIFTING..... D-12	OPTIONAL..... J-07	REAR WHEEL..... J-04	TRANSMISSION..... D-10
BATTERY..... E-44	CRANKCASE..... B-05	FRONT CALIPER..... I-06	HANDLE BAR..... H-02	RADIATOR HOSE..... D-07	SEAT TAIL COVER.... H-11	TRANSITIONAL LAMP.... F-06

FIG.15A

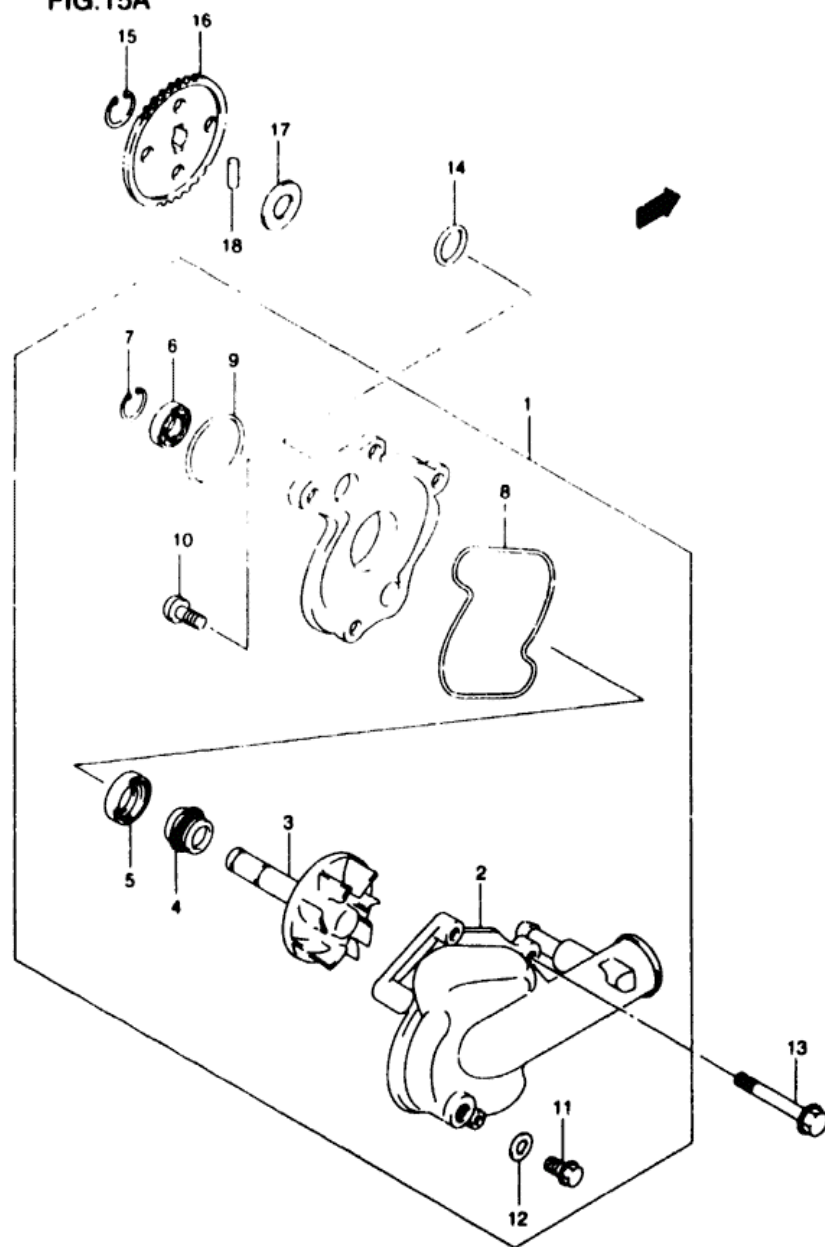


FIG 15A(D-5) WATER PUMP (MODEL Y)

REF.NO.	PART NO.	DESCRIPTION	Q'TY	REMARKS
1	17400-19F10	PUMP ASSY. WATER	1	
2	17411-19F00	CASE, WATER PUMP	1	
3	17491-19F10	IMPELLER/SHAFT	1	
4	17470-02F10	SEAL, MECHANICAL	1	
5	09283-10004	OIL SEAL (10X21X5,	1	
6	09262-10014	BEARING (10X26X8)	1	
7	08332-11086	E RING	1	
8	17418-19F00	O RING	1	
9	17435-33400	O RING	1	
10	02112-06163	SCREW	2	
11	17415-14300	BOLT DRAIN	1	
12	09168-08008	GASKET (R 2x14x1)	1	
13	09103-06206	BOLT	3	
14	09280-22001	O RING (ID 24 ID 21 R)	2	
15	08331-31106	CIRCLIP	1	
16	17461-19F00	GEAR WATER PUMP DRIVEN	1	
17	09181-10158	SHIM	1	
18	09261-04002	ROLLER	1	

18 SV650 Y E3/E33

D 5

AIR CLEANER..... C-08	CRANKCASE COVER.... B-07	FRONT BRAKE HOSE... I-07	GEAR SHIFTING..... D-12	OPTIONAL..... J-07	REAR WHEEL..... J-04	TRANSMISSION..... D-14
BATTERY..... E-04	CRANKCASE..... B-05	FRONT CALIPER..... I-06	HANDLE BAR..... H-02	RADIATOR NOSE..... D-07	SEAT TAIL COVER.... H-11	TURNSIGNAL LAMP.... F-06
CAM CHAIN..... C-04	CRANKSHAFT..... B-08	FRONT CYLINDER HEAD B-02	HANDLE LEVER..... H-04	RADIATOR..... D-06	SEAT..... H-10	WARNING LABEL..... H-09
CAM SHAFT / VALVE.. C-03	CYLINDER..... B-04	FRONT FENDER..... G-11	HANDLE SWITCH..... F-11	REAR CALIPER..... J-05	SPEEDOMETER..... F-02	WATER PUMP..... D-04
FAIRING/TIME FITTING C-07	ELECTRICAL..... E-06	FRONT FEND DAMPER T-02	METER AND MOUNTING C-10	REAR CUSHION LEVER J-03	STAND..... G-03	WIRING HARNESS..... F-09

FIG.16

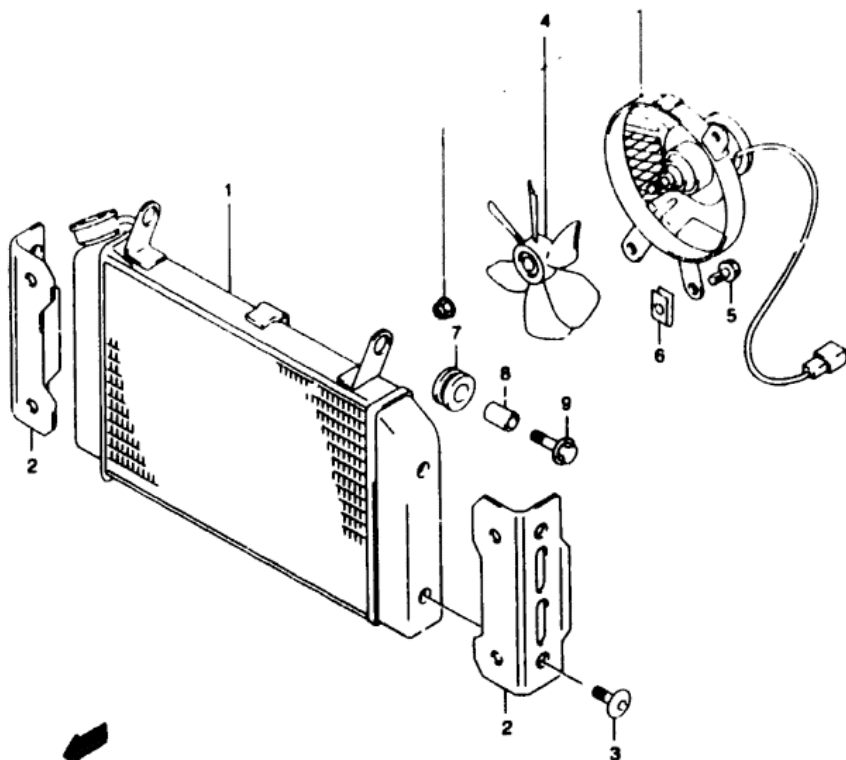


FIG 16 (D-6)

RADIATOR

REF.NO.	PART NO.	DESCRIPTION	Q'TY	REMARKS
1-1	17710-19F10	RADIATOR ASSY. WATER	1	SV650X/Y
1-2	17710-19F00	RADIATOR ASSY. WATER	1	SV650S*/SY E28
2	17761-19F00	COVER, RADIATOR	2	SV650X/Y
3	09139-06027	SCREW (6X12)	4	SV650X/Y
4	17800-19F10	FAN ASSY. RADIATOR	1	
5	01550-06103	BOLT	3	
6	09148-06115	NUT	3	
7	09320-10042	CUSHION	3	
8	09180-06290	SPACER (6.5X10X12)	3	
9	09118-06097	BOLT (6X25)	3	

19 SV650 Y E3/E33

D 6

AIR CLEANER.....	C-08	CRANKCASE COVER....	B-07	FRONT BRAKE HOSE...	I-07	GEAR SHIFTING.....	D-12	OPTIONAL.....	J-07	REAR WHEEL.....	J-04	TRANSMISSION.....	D-10
BATTERY.....	E-04	CRANKCASE.....	B-05	FRONT CALIPER.....	I-06	HANDLE BAR.....	H-02	RADIATOR HOSE.....	D-07	SEAT TAIL COVER....	H-11	TURN SIGNAL LAMP....	F-06