

FIG.24

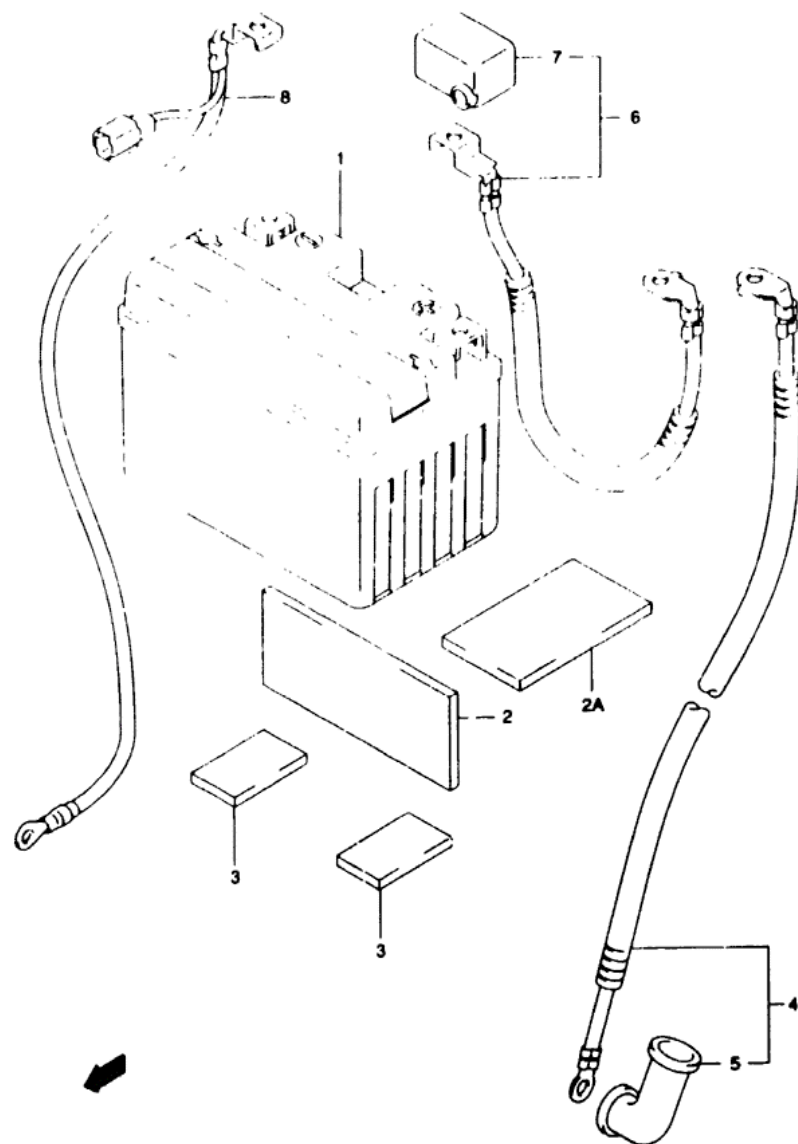


FIG 24 (E-4) BATTERY

REF. NO.	PART NO.	DESCRIPTION	Q'TY	REMARKS
1	33610-02F00	BATTERY ASSY (YT12A-BS 12V 10AH)	1	
2	33651-37000	PROTECTOR (170X95X30)	3	CUT AS REQUIRED PROFILE (115X50)
2A	33652-19F00	PROTECTOR (40X85X5)	1	
3	33652-28000	PROTECTOR BATTERY (20X45X5)	2	
4	33810-19F00	WIRE STARTER MOTOR LEAD	1	
5	31861-48B10	CAP STARTER MOTOR LEAD	1	
6	33820-19F00	WIRE BATTERY (+) LEAD	1	
7	33624-16E00	CAP BATTERY (+)	1	
8	34250-19F00	WIRE BATTERY (-) LEAD	1	

29 SV650 Y E3/E33

E4

AIR CLEANER..... C-08 CRANKCASE COVER.... B-07 FRONT BRAKE HOSE... I-07 REAR SHIFTING..... D-12 OPTIONAL..... J-07 REAR WHEEL..... J-04 TRANSMISSION..... D-10

FIG.25

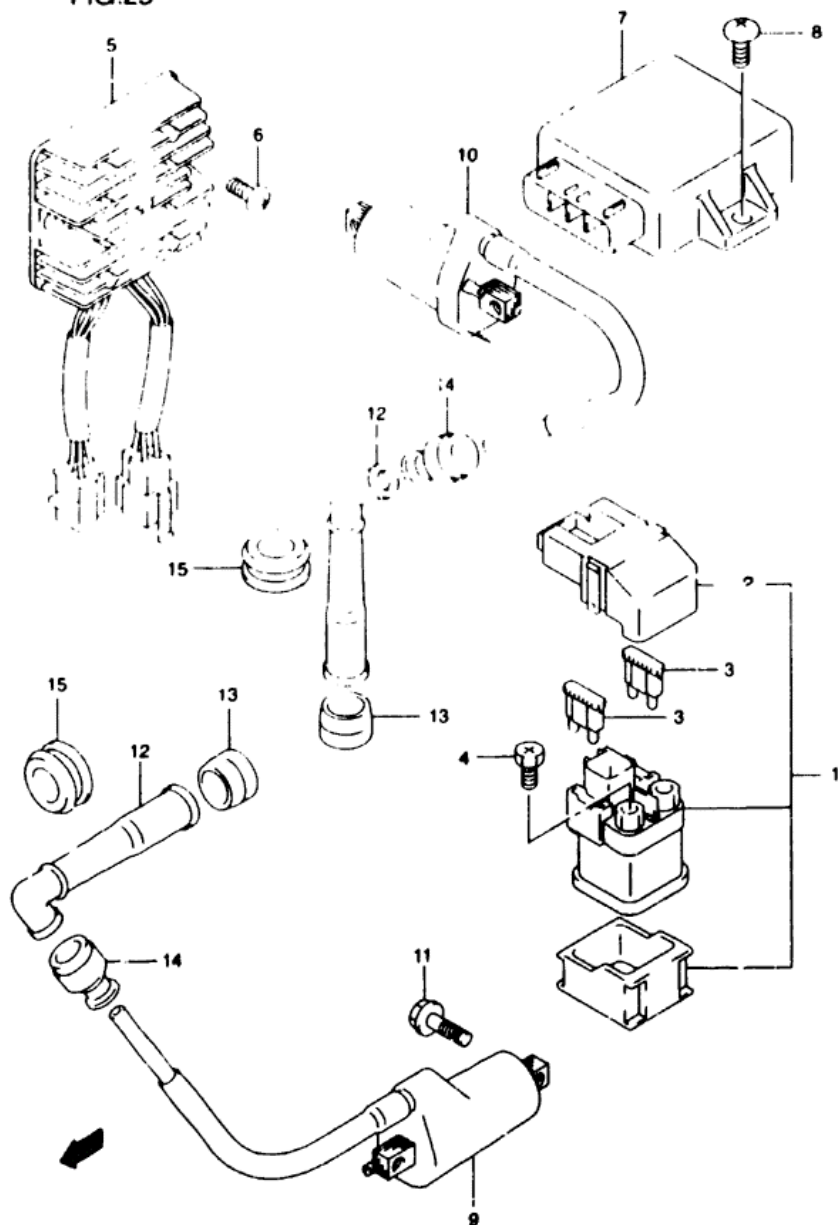


FIG 25 (E-5)

ELECTICAL

REF.NO.	PART NO.	DESCRIPTION	Q'TY	REMARKS
1	31800-21E20	RELAY ASSY. STARTING MOTOR	1	
2	31861-21E20	COVER, RELAY ASSY	1	
3	09481-30101	FUSE (30A)	2	
4	09128-06013	SCREW (6X8)	2	
5	32800-24B01	RECTIFIER ASSY	1	
6	02162-06163	BOLT	2	
7	32900-20F10	IGNITER ASSY	1	
8	03542-06163	SCREW	2	
9	33410-19F00	COIL ASSY. IGNITION	1	
10	33420-19F00	COIL ASSY. IGNITION	1	
11	01500-06203	BOLT	4	
12	33510-11D00	CAP. SPARK PLUG	2	
13	33541-23E01	SEAL. SPARK PLUG CAP	2	
14	33542-38B00	SEAL. HIGH TENSION CORD	1	
15	33543-19F00	COVER. SPARK PLUG CAP	2	

30 SV650 Y E3/E33

E5

AIR CLEANER.....	C-08	CRANKCASE COVER.....	B-07	FRONT BRAKE HOSE.....	I-07	GEAR SHIFTING.....	D-12	OPTIONAL.....	J-07	REAR WHEEL.....	J-04	TRANSMISSION.....	D-10
BATTERY.....	E-04	CRANKCASE.....	B-05	FRONT CALIPER.....	I-06	HANDLE BAR.....	H-02	RADIATOR HOSE.....	D-07	SEAT TAIL COVER.....	H-11	TURN SIGNAL LAMP.....	F-06
CAN CHAIN.....	C-04	CRANKSHAFT.....	B-08	FRONT CYLINDER HEAD.....	B-02	HANDLE LEVER.....	H-04	RADIATOR.....	J-06	SEAT.....	H-10	WARNING LABEL.....	H-09
CAN SHAFT / VALVE.....	C-03	CYLINDER.....	B-04	FRONT FENDER.....	C-11	MAIN F. SWITCH.....	F-11	REAR CALIPER.....	J-05	SPEEDMETER.....	F-02	WATER PUMP.....	D-04

FIG.26

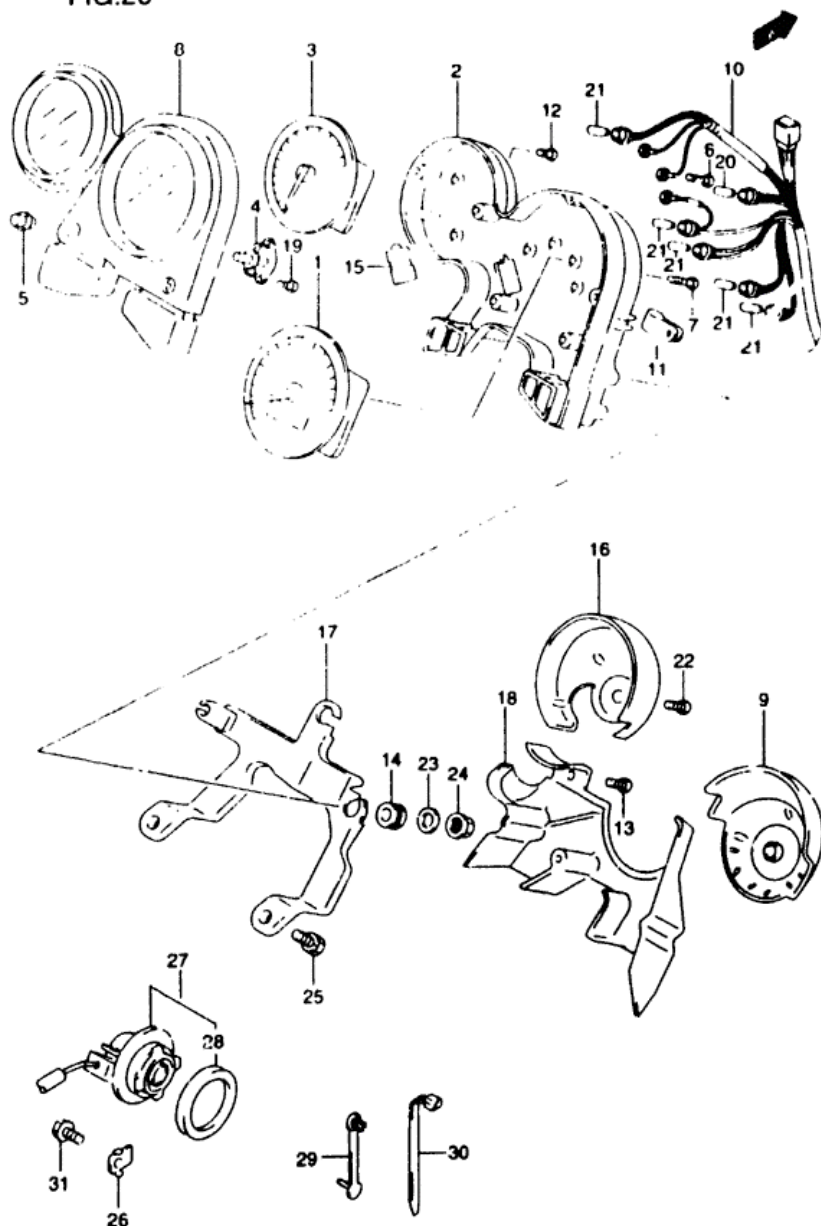


FIG 26 (F-2)

SPEEDOMETER (SV650X/Y)

REF.NO.	PART NO.	DESCRIPTION	Q'TY	REMARKS
1	34110-20F10	SPEEDOMETER (MILF)	1	
2	34111-19F20	LOWER CASE	1	
3	34210-20F00	TACHOMETER	1	
4	34123-33E00	ATTACHMENT SWITCH	1	
5	34124-33E00	SWITCH GUM	1	
6	34147-19F20	SCREW PAN HEAD (3x18)	3	
7	34149-19F20	SCREW PAN HEAD (3x20)	4	
8	34150-19F20	UPPER CASE	1	
9	34152-19F20	ORNAMENT SPEEDOMETER	1	
10	34173-19F20	CORD ASSY	1	
11	34176-19F20	CLAMP	1	
12	34183-09F00	SCREW (3x12)	2	
13	34183-19F20	SCREW HEAD TAPPING 4x14	4	
14	34189-19F20	DAMPER	1	
15	34198-19F20	GROMMET	1	
16	34211-19F20	ORNAMENT TACHOMETER	1	
17	34950-19F20	BRACKET	1	
18	36383-19F20	COVER	1	
19	09132-03005	SCREW (3x10)	2	
20	09471-12077	BULB (12V 17W T10)	1	
21	09471-12108	BULB (12V 17W T6.5)	5	
22	03541-04163	SCREW	2	
23	09160-06056	WASHER (6.5x18x1)	3	
24	08310-00067	NUT	3	
25	01550-08163	BOLT	2	
26	34938-14F00	GUIDE, SENSOR LEAD	2	
27	34990-21E00	SENSOR, SPEED	1	
28	286-44001	SEAL, SENSOR OIL	1	
29	09407-03401	CLAMP	1	
30	09407-14407	CLAMP (L 145)	3	
31	01550-06123	BOLT	2	

REFER TO FIG.26A(F-3) FOR SV650S/SY E28

31 SV650 Y E3/E33

F2

AIR CLEANER.....	C-08	CRANKCASE COVER....	B-07	FRONT BRAKE HOSE....	I-07	GEAR SHIFTING.....	D-12	OPTIONAL.....	J-07	REAR WHEEL.....	J-04	TRANSMISSION.....	D-10
BATTERY.....	E-04	CRANKCASE.....	D-05	FRONT CALIPER.....	I-06	HANDLE BAR.....	H-02	RADIATOR HOSE.....	D-07	SEAT TAIL COVER....	H-11	TURNSIGNAL LAMP....	F-06
CAM CHAIN.....	C-04	CRANKSHAFT.....	B-08	FRONT CYLINDER HEAD	B-02	HANDLE LEVER.....	H-04	RADIATOR.....	D-06	SEAT.....	H-10	WARNING LABEL.....	H-09
CAM SHAFT / VALVE	C-03	CYLINDER.....	B-04	FRONT FENDER.....	C-11	HANDLE SWITCH.....	E-11	REAR CALIPER.....	J-05	SPEEDOMETER.....	F-02	WATER PUMP.....	D-04

FIG.26A

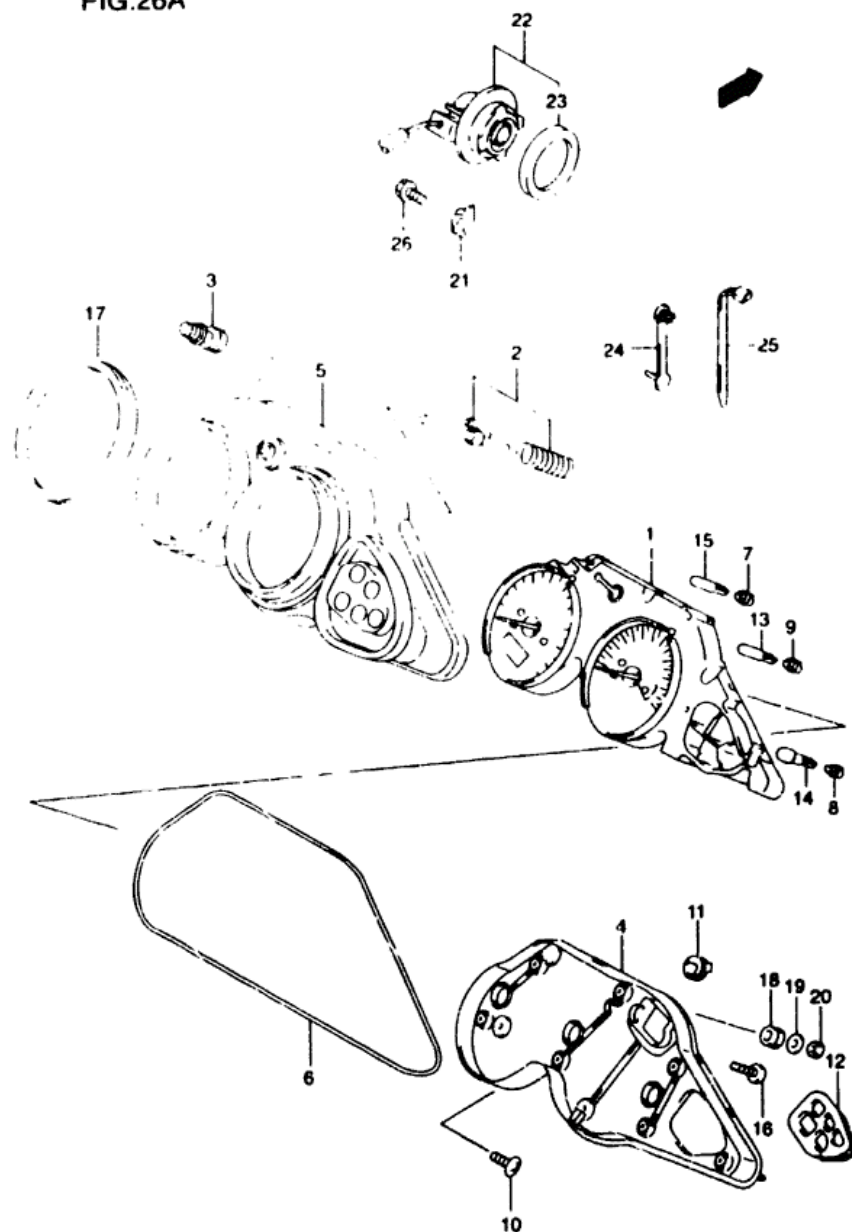


FIG 26A(F-3) SPEEDOMETER (SV650SX/SY E28)

REF.NO.	PART NO.	DESCRIPTION	Q'TY	REMARKS
1-1	34119-20F30	SPEEDOMETER	1	MODEL X
1-2	34119-20F31	SPEEDOMETER	1	MODEL Y
2	34123-02F06	LEVER	1	
3	34124-02F00	SWITCH GUM	1	
4	34130-02F00	CASE ASSY	1	
5	34150-19F00	VISOR	1	
6	34153-02F00	GASKET	1	
7	34172-71E70	SOCKET	3	
8	34173-19D00	SOCKET	3	
9	34173-19D70	SOCKET	2	
10	34183-33D00	SCREW SPEEDOMETER (4x14)	2	
11	34198-02F00	BLIND CAP	3	
12	34198-02F10	BLIND	1	
13	09471-12085	BULB (14 / 17A)	2	
14	09471-12100	BULB (12 / 17A)	1	
15	09471-12189	BULB (14 / 184W)	3	
16	03211-04207	SCREW	6	
17	34188-02F00	CUSHION	2	
18	34996-43410	CUSHION	4	
19	09160-05037	WASHER (5.5x10x1.20)	4	
20	08310-00053	NUT	4	
21	34938-14F00	GUIDE FOR LEAD	1	
22	34990-21E00	SENSOR SPEED	1	
23	09286-44001	SEAL SENSOR	1	
24	09407-03401	CLAMP	1	
25	09407-14407	CLAMP (L 145)	3	
26	01550-06123	BOLT	2	

32 SV650 / E3/E33

F3

AIR CLEANER.....	C-08	CRANKCASE COVER....	B-07	FRONT BRAKE HOSE....	I-07	REAR SHIFTING.....	D-12	OPTIONAL.....	J-07	REAR WHEEL.....	J-04	TRANSMISSION.....	D-10
BATTERY.....	E-04	CRANKCASE.....	B-05	FRONT CALIPER.....	I-06	HANDLE BAR.....	H-02	RADIATOR NOS.....	D-07	SEAT TAIL COVER....	H-11	TURN SIGNAL LAMP....	F-06
CAR CHAIN.....	C-04	CRANKSHAFT.....	B-08	FRONT CYLINDER HEAD	B-02	HANDLE LEVER.....	H-04	RADIATOR.....	D-06	SEAT.....	H-10	WARNING LABEL.....	H-09
CAM SHAFT / VALVE	C-03	CYLINDER.....	B-06	FRONT FENDER.....	E-11	STARTER MOTOR.....	E-11	REAR CALIPER.....	J-05	SPEEDOMETER.....	F-02	WATER PUMP.....	D-04

FIG.27

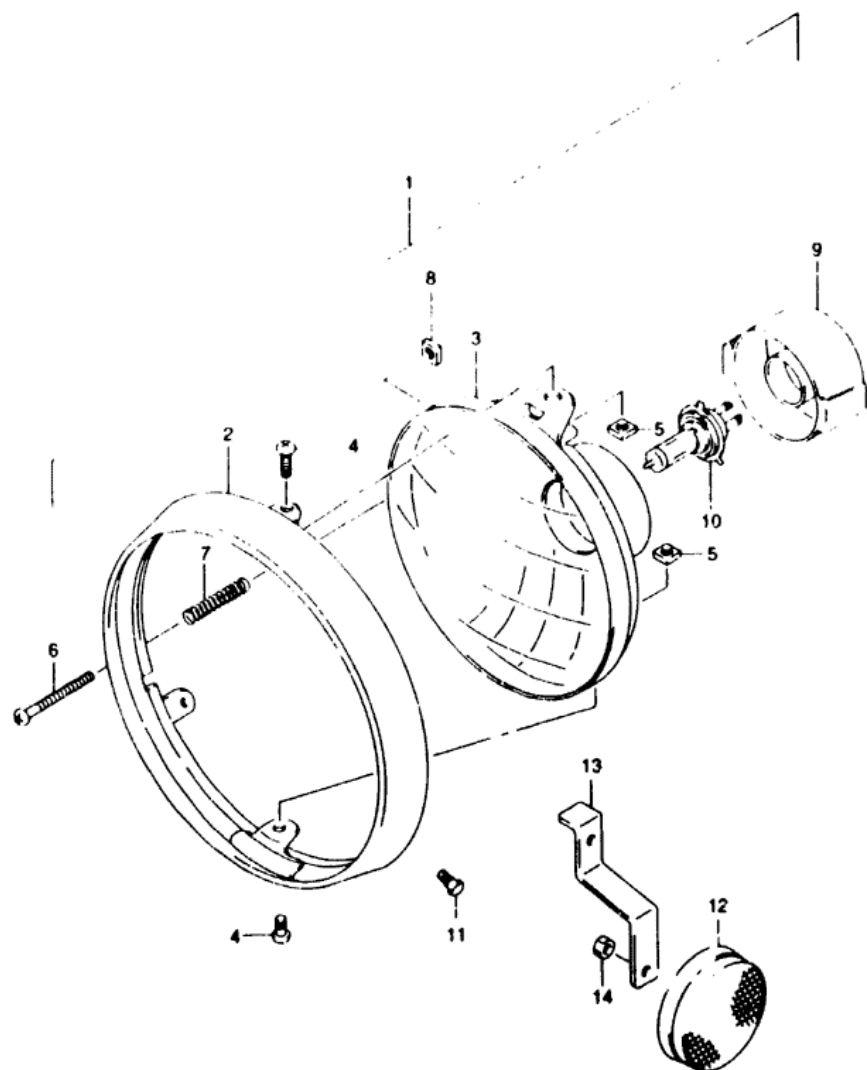


FIG 27 (F-4)

HEADLAMP (SV650X/Y)

REF.NO.	PART NO.	DESCRIPTION	Q'TY	REMARKS
1	35100-19F00-999	HEADLAMP ASSY	1	
2	35111-19F00	RIM	1	
3	35121-19F00	LAMP UNIT	1	
4	35181-19F00	SCREW (5X16)	2	
5	35135-45900	NUT	2	
6	35151-19F00	SCREW ADJUSTING	1	
	35154-13F00	SPRING	1	
8	35152-45600	NUT	1	
9	35174-19F00	COVER SOCKET	1	
10	09471-12185	BULB (12V 60/55W)	1	
11	09139-05038	SCREW	2	
12	35950-14A00	REFLEX REFLECTOR ASSY	2	
13	35956-19F00	BRACKET FRONT SIDE RR	2	
14	0R310-00053	NUT	2	

REFER TO FIG 27A(F-5) FOR SV650SX/SY E28

FIG.27A

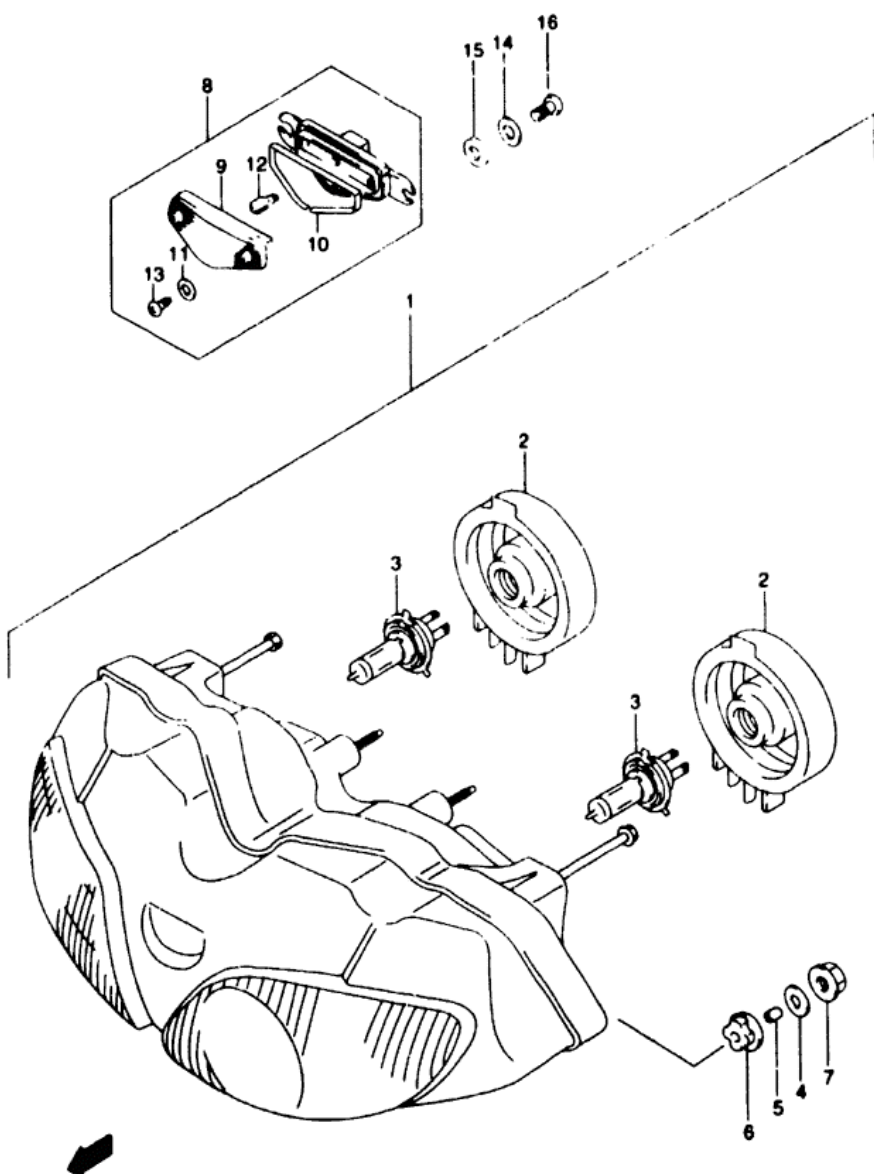


FIG 27A(F-5) HEADLAMP (SV650SX/SY E28)

REF.NO.	PART NO.	DESCRIPTION	Q'TY	REMARKS
	35100-20F30-999	HEADLAMP ASSY	1	
2	35125-02F00	COVER, SOCKET	2	
3	09471-12102	BULB (12V,44S/45W)	2	
4	09160-06088	WASHER (6.5X20X1.6)	4	
5	09180-06267	SPACER (6.5X9X12.5)	4	
6	09320-09010	CUSHION	4	
7	08316-10063	NUT	4	
8	36110-20F00	LAMP ASSY FRONT POSITION	1	
9	36112-09F00	LENS	1	
10	36113-20F00	GASKET	1	
11-1	36117-08F00	WASHER	2	MODEL X
11-2	36128-37B00	WASHER	2	MODEL Y
12	09471-12081	BULB (12V,55W)	1	
13	03211-04123	SCREW	2	
14	09161-05045	WASHER (5.5X18X1.0)	2	
15	09320-08001	CUSHION	2	
16	03511-15103	SCREW	2	

34 SV650 Y E3/E33

F5

AIR CLEANER..... C-08	CRANKCASE COVER.... B-07	FRONT BRAKE HOSE... I-07	GEAR SHIFTING..... D-12	OPTIONAL..... J-07	REAR WHEEL..... J-04	TRANSMISSION..... D-10
BATTERY..... E-04	CRANKCASE..... B-05	FRONT CALIPER..... I-06	HANDLE BAR..... H-02	RADIATOR HOSE..... D-07	SEAT TAIL COVER.... H-11	TURN SIGNAL LAMP.... F-06
CAM CHAIN..... C-04	CRANKSHAFT..... B-08	FRONT CYLINDER HEAD B-02	HANDLE LEVER..... H-04	RADIATOR..... D-06	SEAT..... H-10	WARNING LABEL..... H-09
CAM SHAFT / VALVE C-03	CVT INTER..... B-04	FRONT FENDER..... C-11	MAPLE SWITCH..... E-11	REAR CALIPER..... J-05	SPEEDOMETER..... F-02	WATER PUMP..... D-04

FIG.28

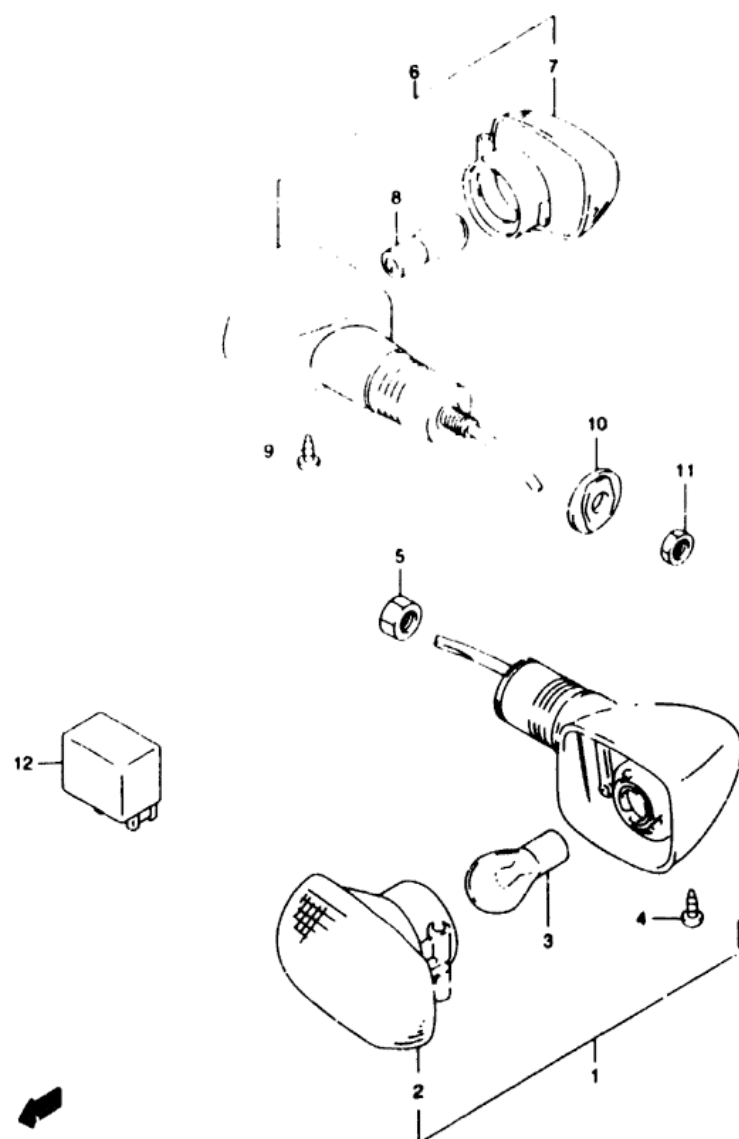


FIG 28 (F-6)

TURNSIGNAL LAMP (SV650X/Y)

REF.NO.	PART NO.	DESCRIPTION	Q'TY	REMARKS
1-1	35601-20F30	LAMP ASSY. FRONT TURNSIGNAL RH	1	
1-2	35602-20F30	LAMP ASSY. FRONT TURNSIGNAL LH	1	
2	35610-33E00	LAMP UNIT	2	
3	09471-12045	BULB (12V 21W)	2	
4	03242-04123	SCREW	2	
5	08316-10103	NUT	2	
6-1	35603-33E10	LAMP ASSY. REAR TURNSIGNAL RH	1	
6-2	35604-33E10	LAMP ASSY. REAR TURNSIGNAL LH	1	
7	35610-33E00	LAMP UNIT	2	
8	09471-12045	BULB (12V 21W)	2	
9	03242-04123	SCREW	2	
10	35695-17C00	SPACER REAR TURNSIGNAL	2	
11	08310-00103	NUT	2	
12	38410-03F04	RELAY ASSY. TURNSIGNAL LAMP	1	

REFER TO FIG 28A(F-7) FOR SV650S X/SY E28

35 SV650 Y E3/E33

F6

AIR CLEANER.....	C-08	CRANKCASE COVER.....	B-07	FRONT BRAKE HOSE.....	I-07	GEAR SHIFTING.....	D-12	OPTIONAL.....	J-07	REAR WHEEL.....	J-04	TRANSMISSION.....	D-10
BATTERY.....	E-04	CRANKCASE.....	B-05	FRONT CALIPER.....	I-06	HANDLE BAR.....	H-02	RADIATOR HOSE.....	D-07	SEAT TAIL COVER.....	H-11	TURNSIGNAL LAMP.....	F-06
CAM CHAIN.....	C-04	CRANKSHAFT.....	B-08	FRONT CYLINDER HEAD.....	B-02	HANDLE LEVER.....	H-04	RADIATOR.....	D-06	SEAT.....	H-10	WARNING LABEL.....	H-09
CAM SHAFT / VALVE.....	C-03	CYLINDER.....	B-02	FRONT CYLINDER.....	B-01	H-01	REAR FALLEN.....	J-08	SPACER.....	F-02	WATER PUMP.....	H-04

FIG.28A

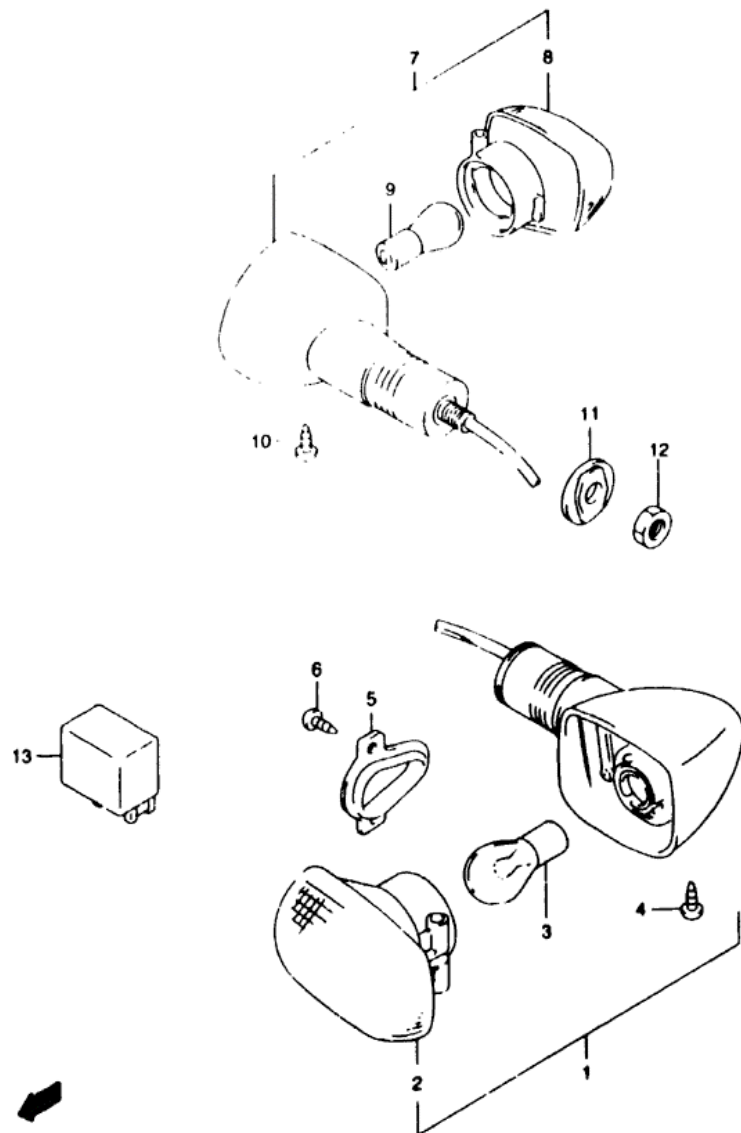


FIG 28A(F. 7)

TURNSIGNAL LAMP (SV650SX/SY E28)

REF.NO.	PART NO.	DESCRIP. ION	Q'TY	REMARKS
1-1	35601-33E30	LAMP ASSY. FRONT TURNSIGNAL RH	1	
1-2	35602-33E30	LAMP ASSY. FRONT TURNSIGNAL LH	1	
2	35610-33E00	LAMP UNIT	2	
3	09471-12945	BULB (12V.21W)	2	
4	03242-04123	SCREW	2	
5	35629-33E00	PLATE FRONT TURNSIGNAL LAMP	2	
6	03511-05103	SCREW	4	
7-1	35603-33E10	LAMP ASSY. REAR TURNSIGNAL RH	1	
7-2	35604-33E10	LAMP ASSY. REAR TURNSIGNAL LH	1	
8	35610-33E00	LAMP UNIT	2	
9	09471-12045	BULB (12V.21W)	2	
10	03242-04123	SCREW	2	
11	35695-17C00	SPACER REAR TURNSIGNAL	2	
12	08310-00103	NUT	2	
13	38610-03F00	RELAY ASSY. TURNSIGNAL LAMP	1	

36 SV650 Y E3/E33

F7

FIG.29

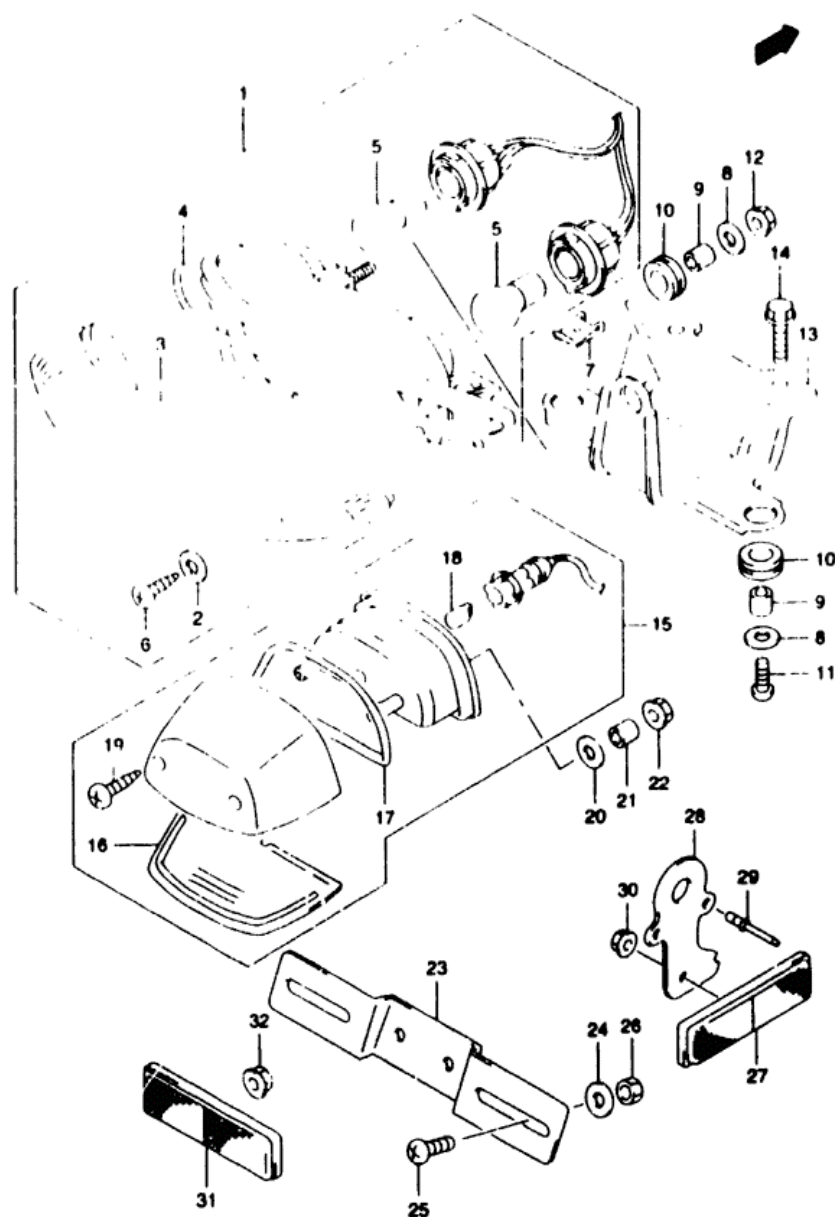


FIG 29 (F-8)

TAIL LAMP

REF.NO.	PART NO.	DESCRIPTION	Q'TY	REMARKS
1	35710-02F30	LAMP ASSY. REAR COMBINATION	1	
2	35627-43010	GASKET	2	
3	35712-02F30	LENS	1	
4	35713-02F00	GASKET	1	
5	09471-12128	BULB (12V 21/W)	1	
6	03211-04207	SCREW	2	
7	09148-05020	NUT	2	
8	09160-06088	WASHER (6.5X20X1.6)	3	
9	09180-06285	SPACER (6.5X10X9)	3	
10	09320-09007	WASHER	3	
11	03541-05203	SCREW	2	
12	08316-10063	NUT	1	
13	35726-19F00	BRACKET REAR COMBINATION	1	
14	01550-06123	BOLT	1	
15	35710-02F00	LAMP ASSY. LICENSE	1	
16	35712-02F00	LENS	1	
17	35913-02F00	GASKET	1	
18	09471-12081	BULB (12V 5W)	1	
19	03211-04163	SCREW	2	
20	09160-06088	WASHER (6.5X20X1.6)	2	
21	09180-05054	SPACER (5.5X9.5X11.5)	2	
22	08315-10053	NUT	2	
23	35927-48830	BRACKET LICENSE PLATE	1	
24	09160-06088	WASHER (6.5X20X1.6)	2	
25	02142-06123	SCREW	2	
26	08316-10063	NUT	2	
27	35970-07F00	REFLECTOR ASSY. REAR	2	
28	35975-19F00	BRACKET, REAR SIDE RR	2	
29	09229-04038	RIVET, REAR SIDE	2	
30	08310-00053	NUT, REAR SIDE	2	
31	35970-07F00	REFLEX REFLECTOR ASSY	1	
32	08316-10053	NUT, REAR	1	

37 SV650 Y E3/E33

F8

AIR CLEANER..... C-08	CRANKCASE COVER..... B-07	FRONT BRAKE HOSE... I-07	GEAR SHIFTING..... D-12	OPTIONAL..... J-07	REAR WHEEL..... J-04	TRANSMISSION..... D-10
BATTERY..... E-04	CRANKCASE..... B-05	FRONT CALIPER..... I-06	HANDLE BAR..... H-02	RADIATOR HOSE..... D-07	SEAT TAIL COVER..... H-11	TURN SIGNAL LAMP..... F-06
CAM CHAIN..... C-64	CRANKSHAFT..... B-08	FRONT CYLINDER HEAD B-02	HANDLE LEVER..... H-04	RADIATOR..... D-06	SEAT..... H-10	WARNING LABEL..... H-09

FIG.30

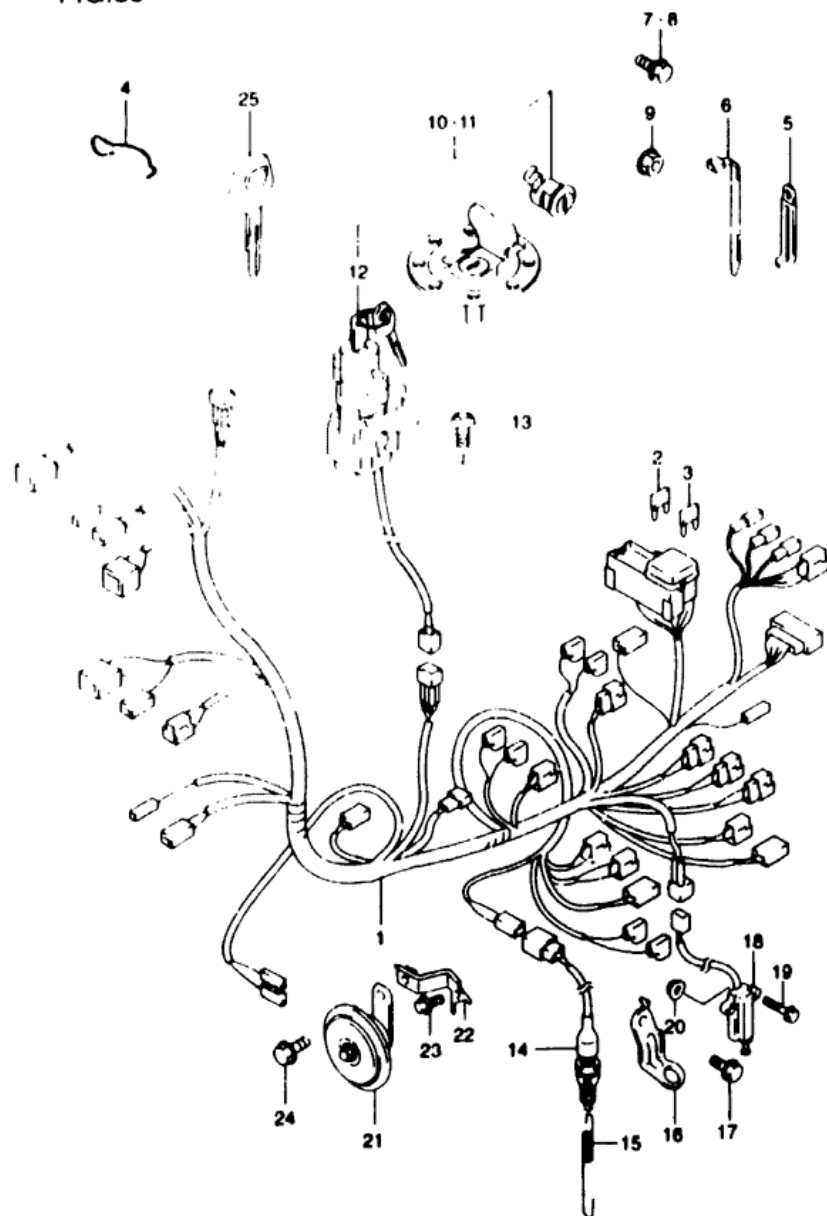


FIG 30 (F-9)

WIRING HARNESS (SV650X/Y)

REF.NO.	PART NO.	DESCRIPTION	Q'TY	REMARKS
1	36610-20F10	HARNESS, WIRING NO 1	1	
2	09481-10501	FUSE (10A)	2	
3	09481-15501	FUSE (15A)	3	
4	36619-20F00	GUIDE, WIRING HARNESS	1	
5-1	09404-06432	CLAMP (L 80)	4	
5-2	09404-06435	CLAMP (L 135)	1	
5-3	09404-08207	CLAMP (L 97)	4	
6-1	09407-14403	CLAMP (L 125)	5	
6-2	09407-18402	CLAMP (L 165)	4	
7	01550-06123	BOLT, WIRING HARNESS	2	
8	01550-08253	BOLT, WIRING HARNESS	1	
9	08316-10083	NUT, WIRING HARNESS	1	
10	37101-19830	LOCK SET	1	
11	37101-19840	LOCK SET	1	E 43
12	37100-19F00	LOCK ASSY, STEERING	1	
13	09139-08016	BOLT (RX20)	2	
14	37740-31D00	SWITCH ASSY, STOP LAMP	1	
15	09443-06065	SPRING	1	
16	43251-19F10	BRACKET, STOP LAMP SWITCH	1	
17	01550-06123	BOLT	1	
18	37840-19F00	SWITCH ASSY, SIDE STAND	1	
19	37849-19F00	BOLT	2	
20	08316-10063	NUT	1	
21	38500-02F60	HORN ASSY	1	
22	38590-19F00	BRACKET, HORN	1	
23	01550-06123	BOLT	1	
24	01550-08123	BOLT	1	
25	37146-33E00	KEY, BLANK	1	OPT

REFER TO FIG 30A(F-10) FOR SV650S/X/SY E28

38 SV650 Y E3/E33

F9

FIG.30A

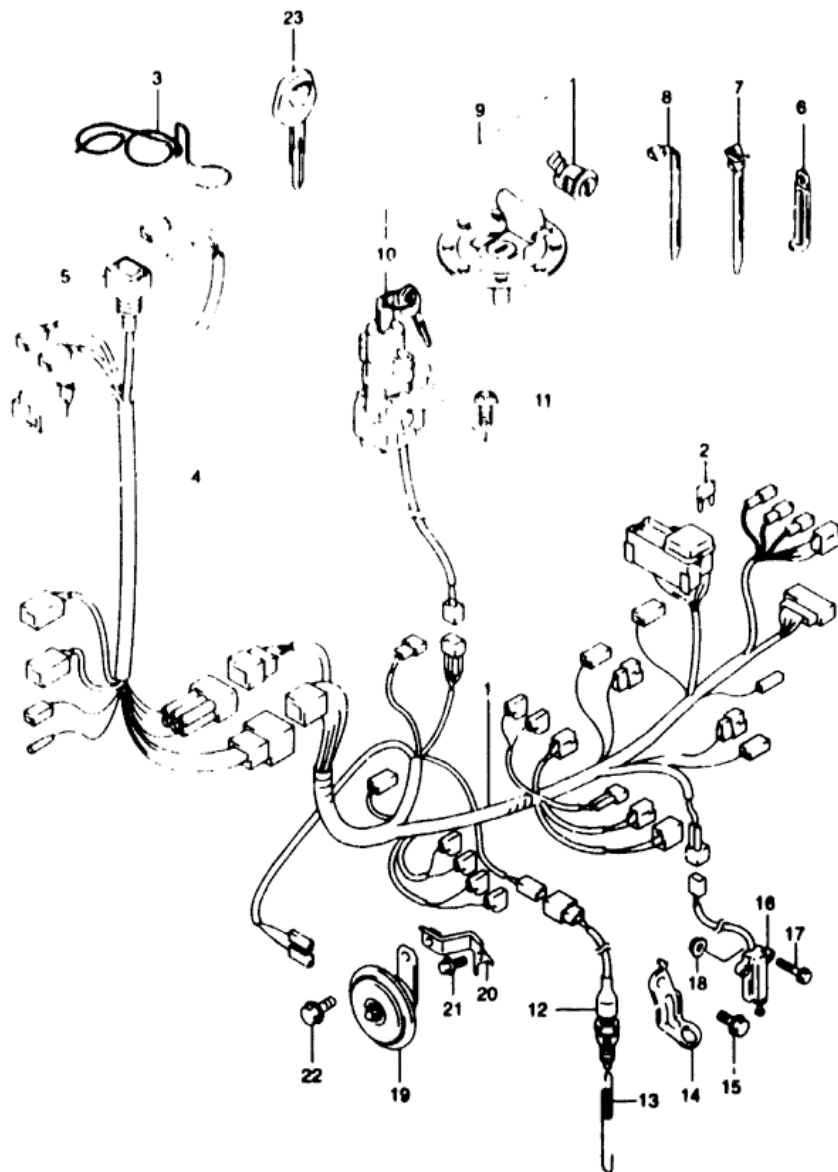


FIG 30A(F-10)

WIRING HARNESS (SV650SX/SY E28)

Q'TY

REF.NO.	PART NO.	DESCRIPTION	REMARKS
1	36610-19F00	HARNASS, WIRING NO 1	1
2-1	09481-10501	FUSE (10A)	2
2-2	09481-15501	FUSE (15A)	3
3	36619-33E00	GUIDE WIRING HARNESS	1
4	36620-19F10	HARNESS WIRING NO 2	1
5	36618-33E00	COVER SPEEDOMETER COUPLER	1
6-1	09404-06432	CLAMP (L 80)	3
6-2	09404-06435	CLAMP (L 135)	1
7	09407-11402	CLAMP (L 90)	2
8-1	09407-14403	CLAMP (L 125)	5
8-2	09407-18402	CLAMP (L 165)	5
9	37401-19B30	LOCK SET	1
10	37100-19F00	LOCK ASSY. STEERING	1
11	09139-08016	BOLT RX2L	2
12	37740-31D00	SWITCH ASSY. STOP LAMP	1
13	09443-06005	SPRING	1
14	43251-19F00	BRACKET STOP LAMP SWITCH	1
15	01550-06123	BOLT	1
16	37840-19F00	SWITCH ASSY. SIDE STAND	1
17	37849-19F00	BOLT	2
18	08316-1006J	NUT	1
19	38500-02F60	HORN ASSY	1
20	38590-19F00	BRACKET HORN	1
21	01550-06123	BOLT	1
22	01550-08123	BOLT	1
23	37146-33E00	KEY, BLANK	1 OPT

39 SV650 Y E3/E33

F 10

AIR CLEANER..... C-08	CRANKCASE COVER.... B-07	FRONT BRAKE HOSE... I-07	GEAR SHIFTING..... D-12	OPTIONAL..... J-07	REAR WHEEL..... J-04	TRANSMISSION..... D-10
BATTERY..... E-04	CRANKCASE..... B-05	FRONT CALIPER..... I-06	HANDLE BAR..... H-02	RADIATOR HOSE..... D-07	SEAT TAIL COVER.... H-11	TURN SIGNAL LAMP... F-06

FIG.31

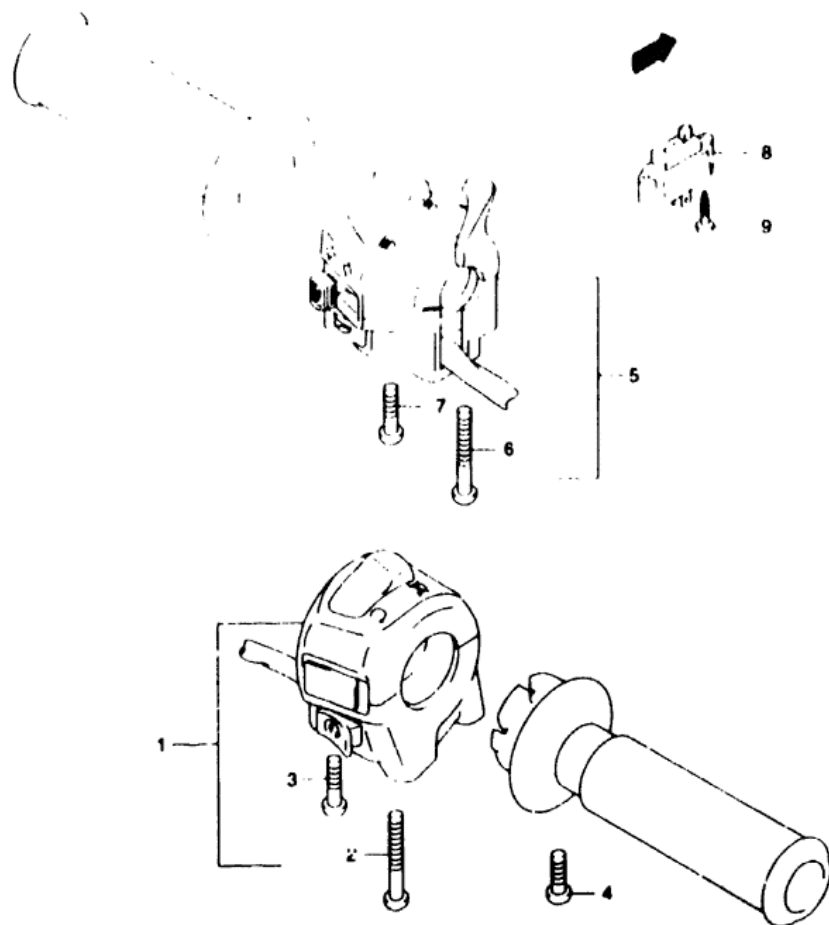


FIG 31 (F-11)

HANDLE SWITCH (SV650X/Y)

REF.NO.	PART NO.	DESCRIPTION	Q'TY	REMARKS
1	37200-27E31	SWITCH ASSY HANDLE RH	1	
2	02112-05505	SCREW	1	
3	02112-05305	SCREW	1	
4	02112-05103	SCREW THROTTLE CABLE	1	
5	37400-23E30	SWITCH ASSY HANDLE LH	1	
6	02112-05455	SCREW	1	
7	09125-05066	SCREW (5x25)	1	
8	37560-38A00	SWITCH ASSY CLUTCH	1	
9	37564-26E00	SCREW	2	

REFER TO FIG 31A(F 12) FOR CLUTCH SWITCH E2R

FIG.31A

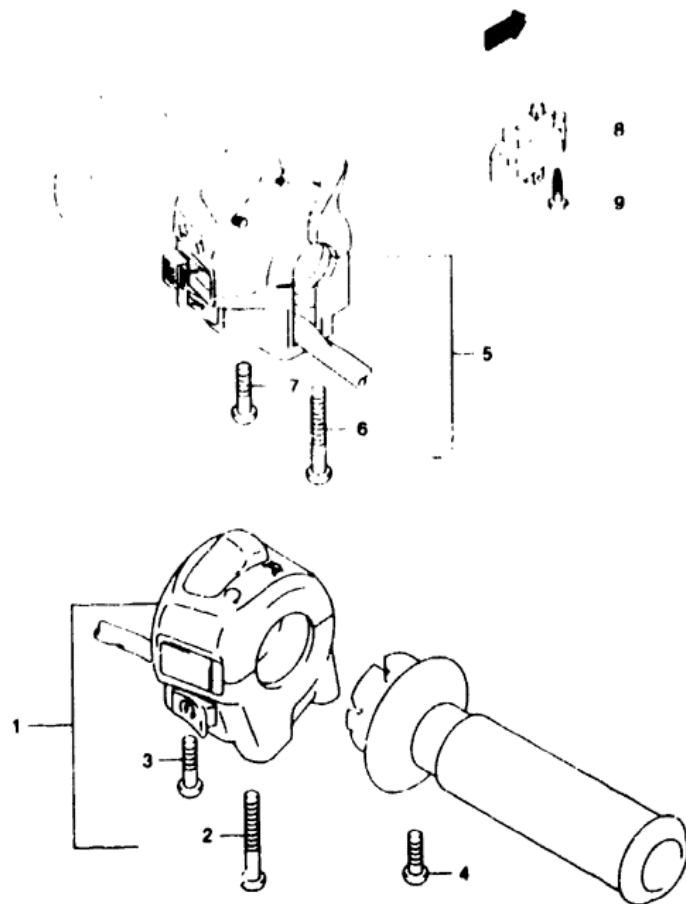


FIG 31A(F-12) HANDLE SWITCH (SV650SX/SY E28)

REF.NO.	PART NO.	DESCRIPTION	Q'TY	REMARKS
1	37200-33E31	SWITCH ASSY HANDLE RH	1	
2	02112-05505	SCREW	1	
3	02112-05305	SCREW	1	
4	02112-05103	SCREW THROTTLE CABLE	1	
5	37400-26E31	SWITCH ASSY HANDLE LH	1	
6	02112-05455	SCREW	1	
7	09125-05065	SCREW (5X25)	1	
8	37560-38A00	SWITCH ASSY CLUTCH	1	
9	37564-11E00	SCREW	2	

FIG.32

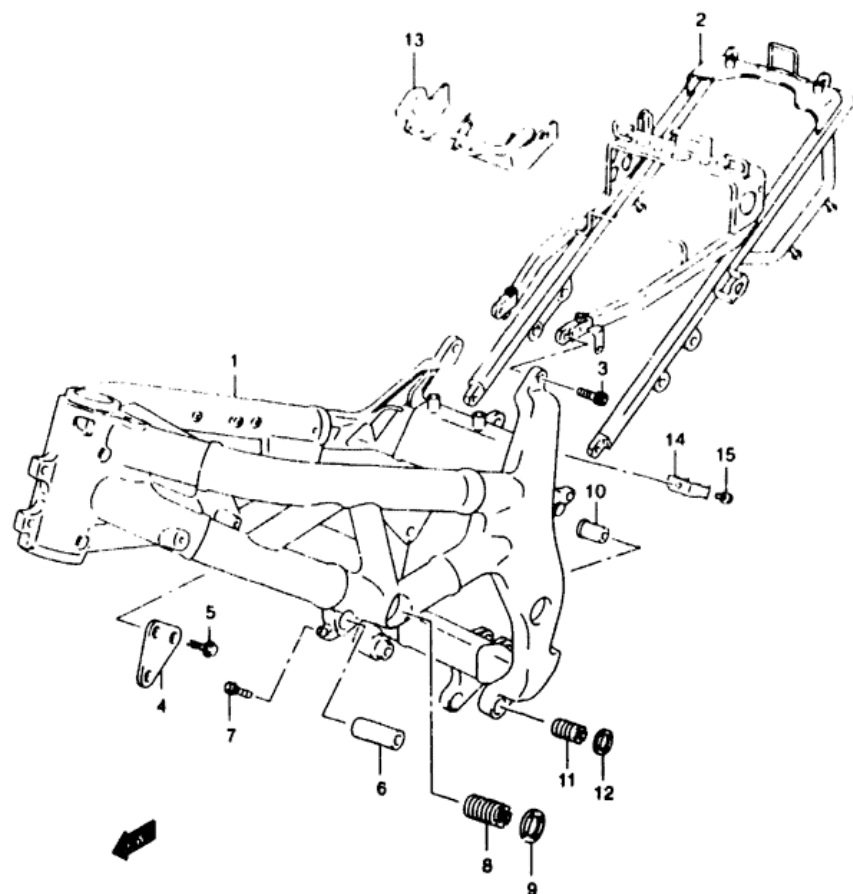


FIG 32 (G-2) FRAME

REF.NO.	PART NO.	DESCRIPTION	Q'TY	REMARKS
1-1	41100-19F01-13L	FRAME (SILVER)	1	MODEL X
1-2	41100-19F02-13L	FRAME (SILVER)	1	MODEL Y
2	41200-19F01	RAIL SEAT	1	
3	07130-10303	BOLT	4	
4	41991-19F00	PLATE MOUNT FRONT RH	1	
5	01550-08203	BOLT	2	
6	41198-19F00	SPACER HEAD MOUNT	3	
7	07130-08307	BOLT	3	
8	41921-19F00	BOLT CRANKCASE ADJUST	1	
9	41922-19F00	NUT CRANKCASE ADJUST	1	
10	41941-19F00	SPACER CRANKCASE REAR UPPER	1	
11	41921-33E11	BOLT CRANKCASE ADJUST	1	
12	41922-33E00	NUT CRANKCASE ADJUST	1	
13	47411-19F01	HOLDER ELECTRIC PART	1	
14	47413-19F00	PLATE RELAY	1	
15	01550-06123	BOLT	1	

****Engine Cases and Frames for this model must be ordered on the Frame/Engine Case Order Form (09924-FC003). If you have any questions regarding these procedures, please call your Parts Coordinator before placing your order.

42 SV650 Y E3/E33

G 2

AIR CLEANER.....	C-08	CRANKCASE COVER....	B-07	FRONT BRAKE HOSE....	I-07	GEAR SHIFTING.....	D-12	OPTIONAL.....	J-07	REAR WHEEL.....	J-04	TRANSMISSION.....	D-10
BATTERY.....	E-04	CRANKCASE.....	B-05	FRONT CALIPER.....	I-06	HANDLE BAR.....	H-02	RADIATOR HOSE.....	D-07	SEAT TAIL COVER....	H-11	TURNSIGNAL LAMP....	F-06
FAN PUMP.....	C-06	FRANKSHAFT.....	B-08	FRONT CYLINDER HEAD B.B.	B-03	HANDLE LEVER.....	H-04	RADIATOR.....	D-04	SEAT.....	H-10	WARNING LABEL.....	H-09

FIG.33

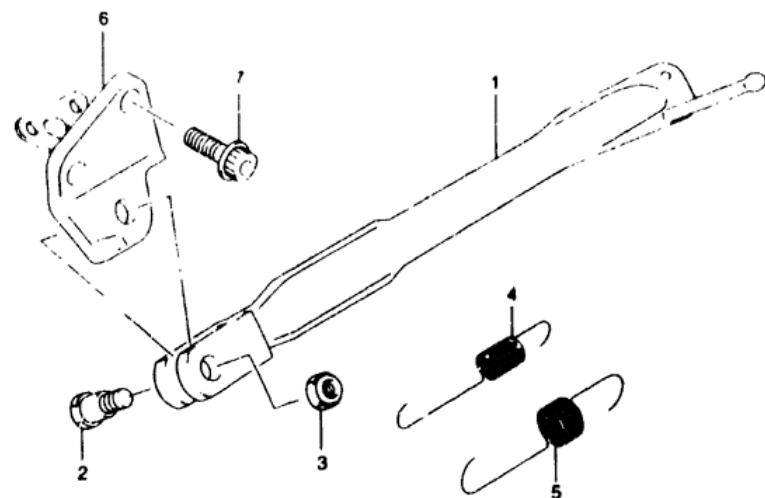
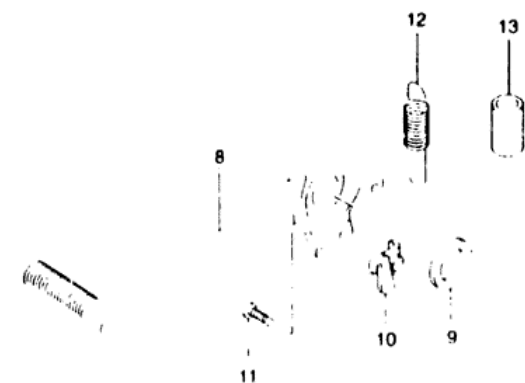


FIG 33 (G-3)

STANL

REF.NO.	PART NO.	DESCRIPTION	Q'TY	REMARKS
1	42310-19F00	STAND, PROP	1	
2	09111-10027	BOLT	1	
3	08319-21103	NUT	1	
4	09443-14006	SPRING INNER	1	
5	09443-19012	SPRING OUTER	1	
6	42330-19F01	BRACKET, PROP STAND	1	
7	07120-10303	BOLT	2	
8	43111-33E00	PEDAL, BRAKE	1	
9	09160-18022	WASHER (13X24X1)	1	
10	43561-27E00	HOOK, RETURN SPRING	1	
11	02112-05163	SCREW	1	
12	09443-13029	SPRING	1	
13	43261-17C00	TUBE, SPRING GUIDE	1	

FIG.34

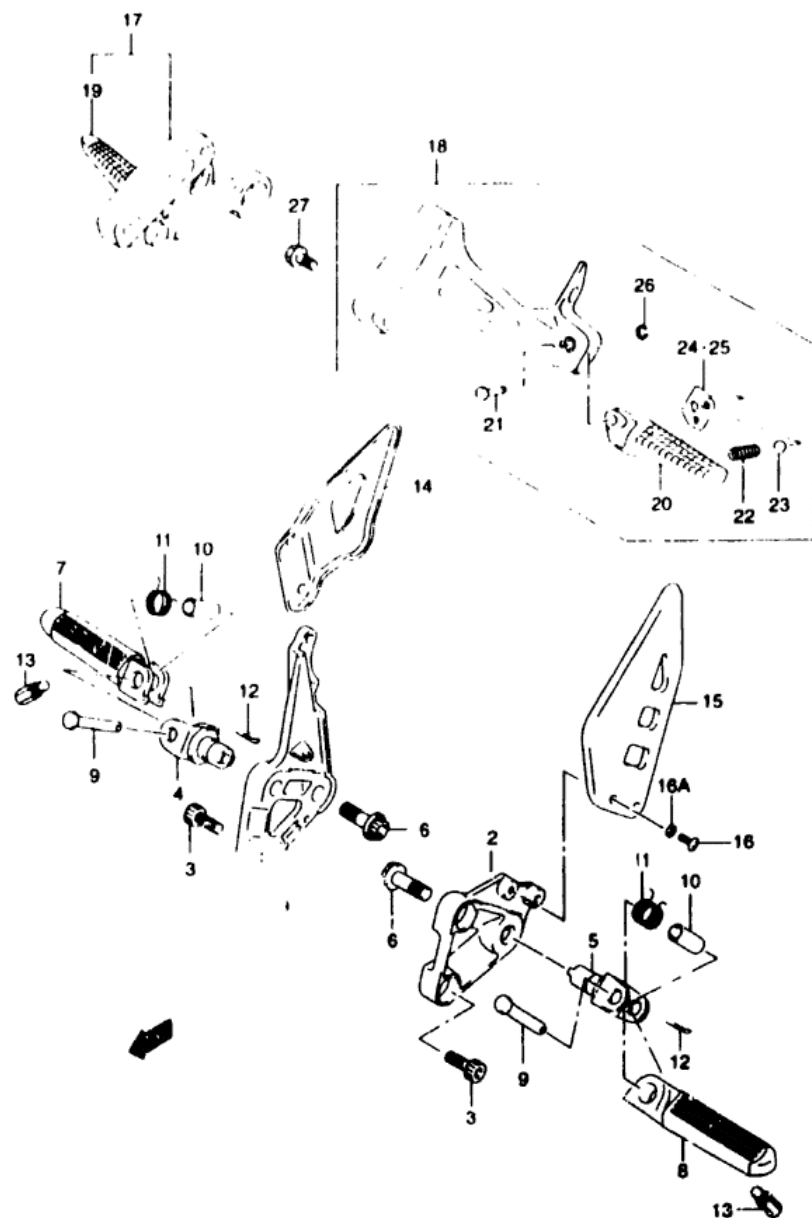


FIG 34 (G-4)

FOOTREST

REF.NO.	PART NO.	DESCRIPTION	Q'TY	REMARKS
1-1	43511-19F00	BRACKET, FRONT FOOTREST RH	1	SV650X/Y
1-2	43511-33E10	BRACKET, FRONT FOOTREST RH	1	SV650SX/SY E28
2-1	43521-19F00	BRACKET, FRONT FOOTREST LH	1	SV650X/Y
2-2	43521-33E00	BRACKET, FRONT FOOTREST LH	1	SV650SX/SY E28
3	07130-08203	BOLT	4	
4	43530-17E01	HOLDER, FOOTREST RH	1	
5	43540-17E00	HOLDER, FOOTREST LH	1	
6	09106-10064	BOLT	2	
7	43510-02F11	BAR, FOOTREST RH	1	
8	43520-02F11	BAR, FOOTREST LH	1	
9	09200-08057	PIN	2	
10	09180-08149	SPACER (8 1X12X22)	2	
11	09448-1R022	SPRING	2	
12	04111-25158	CUTTER PIN	2	
13	43576-07D01	BOLT, BANK SENSOR	2	
14	43571-33E01	GUARD, FRONT FOOTREST RH	1	
15	43576-19F00	GUARD, FRONT FOOTREST LH	1	
16	09139-05054	SCREW (5X16)	2	
16A	09161-08018	WASHER	2	
17	43600-19F00	FOOTREST ASSY, PILLION, RH	1	
18	43700-19F00	FOOTREST ASSY, PILLION LH	1	
19	43611-33E10	BAR, PILLION FOOTREST RH	1	
20	43621-33E10	BAR, PILLION FOOTREST LH	1	
21	09208-06007	PIN	2	
22	09440-05005	SPRING	2	
23	06111-07004	BALL	2	
24	43816-33E21	PLATE, PILLION RH	1	
25	43826-33E21	PLATE, PILLION LH	1	
26	08332-11043	E RING	2	
27	01550-08163	BOLT	4	

FIG.35

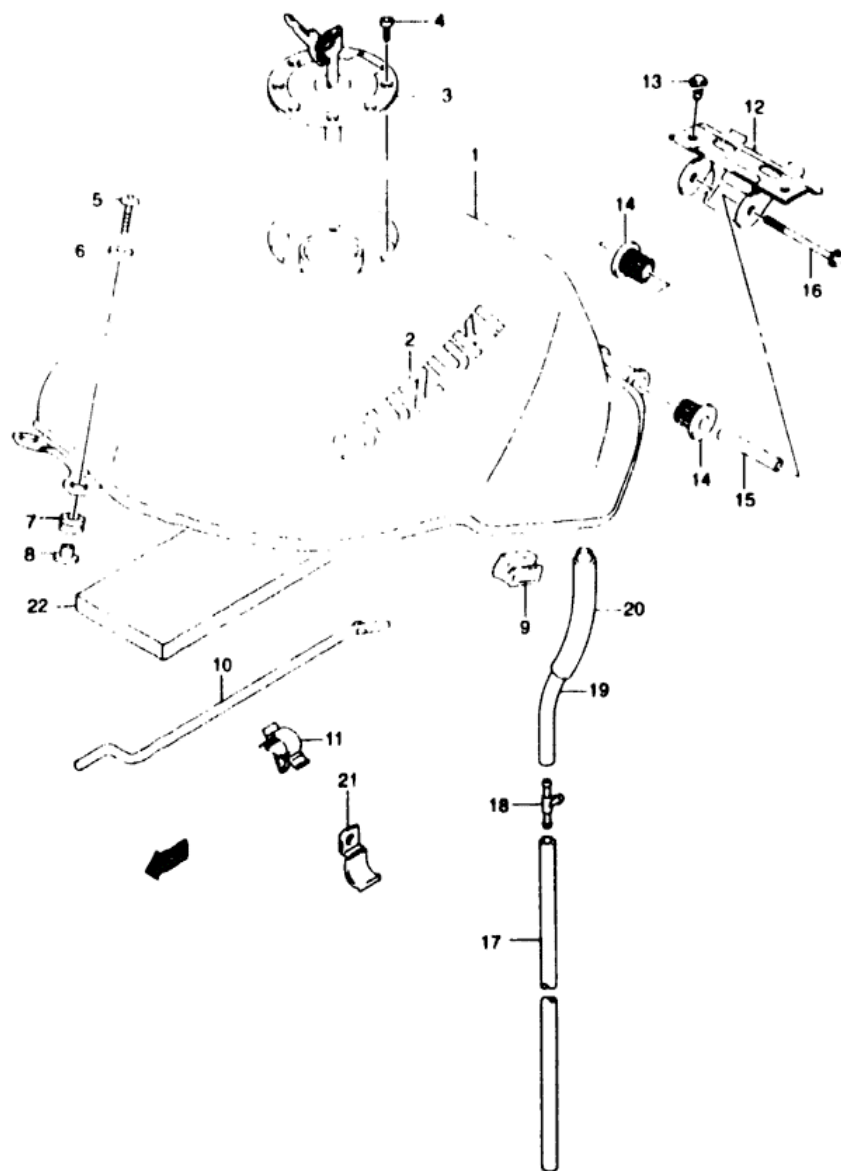


FIG 35 (G-5) FUEL TANK (MODEL X)

REF.NO.	PART NO.	DESCRIPTION	Q'TY	REMARKS
1-1	44100-19F00-Y7E	TANK ASSY. FUEL (BLUE)	1	
1-2	44100-19F00-Y7M	TANK ASSY. FUEL (RED)	1	
1-3	44100-19F20-Y7E	TANK ASSY. FUEL (BLUE)	1	E32
1-4	44100-19F20-Y7M	TANK ASSY. FUEL (RED)	1	E33
2-1	68111-42E00-2YG	EMBLEM FUEL TANK (GRAY)	2	FOR Y7M
2-2	68111-42E00-1ZY	EMBLEM FUEL TANK (GRAY)	2	FOR Y7E
3-1	44200-33870	CAP SET FUEL TANK	1	
3-2	44200-33890	CAP SET FUEL TANK	1	E33
4	09106-05017	BOLT (L 20)	4	
5	09139-06L79	SCREW (5x25)	2	
6	09160-06054	WASHER (5x22-1.6)	2	
7	44512-19F00	CUSHION FRONT	2	
8	44512-19F00	CUSHION FRONT	2	
9	44559-19F00	CUSHION FUEL TANK SIDE	2	
10	44574-33E01	STAY FUEL TANK	1	
11	09403-05310	CLAMP	1	
12	44550-19F10	BRACKET FUEL TANK REAR	1	
13	01550-08163	BOLT	2	
14	44541-02F00	CUSHION FUEL TANK REAR	2	
15	44561-19F00	SPACEER FUEL TANK REAR	1	
16	01550-08853	BOLT	1	
17	09352-70103-600	HOSE, NO 2 (L 600-480)	1	
18	09367-08004	JOINT, 3 WAY	1	
19	09352-70103-600	HOSE, NO 1 (L 600-160)	1	
20	09351-14152-600	PROTECTOR (L 600-140)	1	
21	44339-19F00	CLAMP, DRAIN HOSE	1	
22	44194-19F00	SHIELD, TANK FRONT	1	

REFER TO FIG 35A(G-6) FOR MODEL Y

FIG.35A

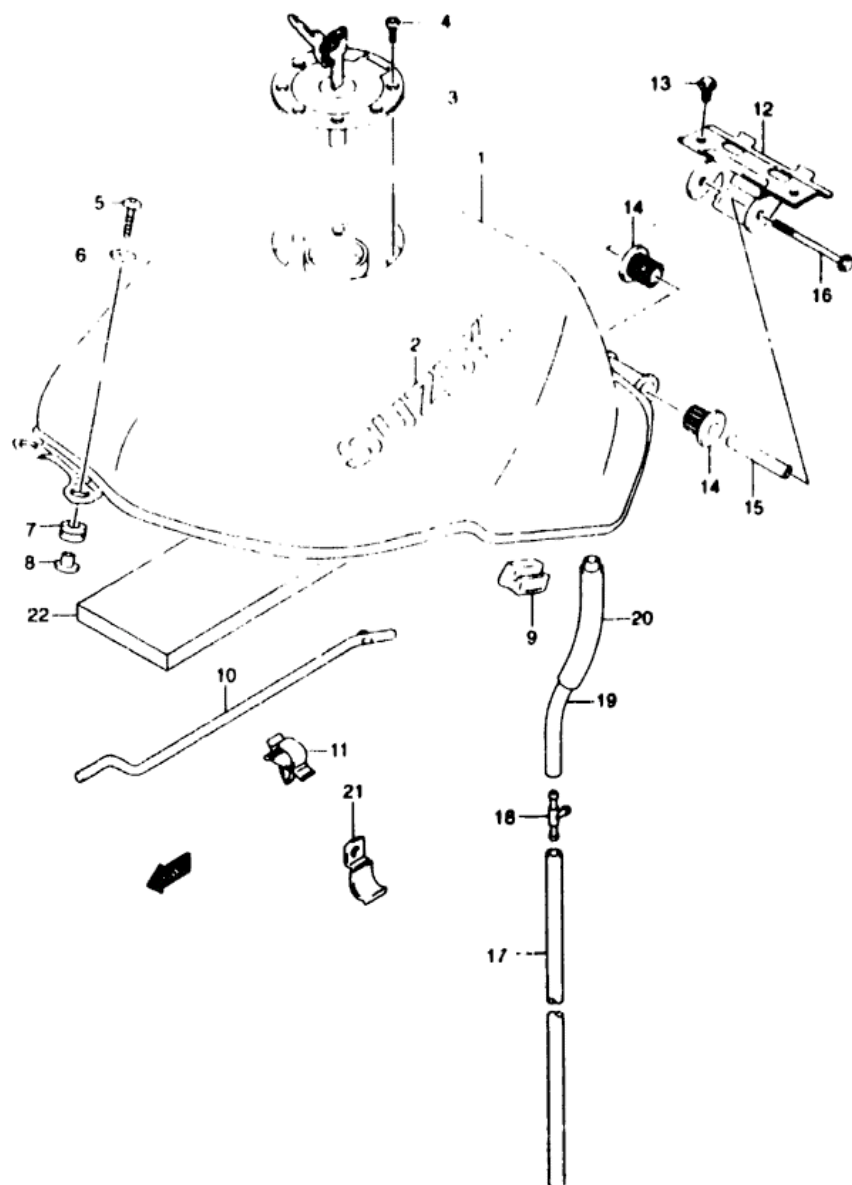


FIG 35A(G-6) FUEL TANK (MODEL Y)

REF.NO.	PART NO.	DESCRIPTION	Q'TY	REMARKS
1-2	44100-19F40-Y7M	TANK ASSY. FUEL (RED)	1	
1-4	44100-19F40-YC2	TANK ASSY. FUEL (BLUE)	1	
1-6	44100-19F50-Y7M	TANK ASSY. FUEL (RED)	1	E33
1-8	44100-19F50-YC2	TANK ASSY. FUEL (BLUE)	1	E33
2-1	68111-12C00-1ZY	EMBLEM FUEL TANK (GRAY)	2	FOR Y7L YC2
2-2	68111-12C00-20G	EMBLEM FUEL TANK (GRAY)	2	FOR Y7M
3-1	44200-33870	CAP SET FUEL TANK	1	
3-2	44200-33890	CAP SET FUEL TANK	1	E33
4	09106-05017	BOLT (L 20)	4	
5	09139-02712	SCREW (5X20)	2	
6	09160-06054	WASHER (6.5X22X1.2)	2	
7	44511-19F00	CUSHION FRONT	2	
8	44512-19F00	CUSHION FRONT	2	
9	44559-19F00	CUSHION FUEL TANK SIDE	2	
10	44574-33E01	STAY FUEL TANK	1	
11	09403-05310	CLAMP	1	
12	44550-19F10	BRACKET FUEL TANK REAR	1	
13	01550-08163	BOLT	2	
14	44541-02F00	CUSHION FUEL TANK REAR	2	
15	44561-19F00	SPACER FUEL TANK REAR	1	
16	01550-08853	BOLT	1	
17	09352-70103-600	HOSE NO 2 (L 600 →480)	1	
18	09367-08004	JOINT 3 WAY	1	
19	09352-70103-600	HOSE NO 1 (L 600 →160)	1	
20	09351-14152-600	PROTECTOR (L 600 →140)	1	
21	44339-19F00	CLAMP DRAIN HOSE	1	
22	44194-19F00	SHIELD TANK FRONT	1	

FIG.36

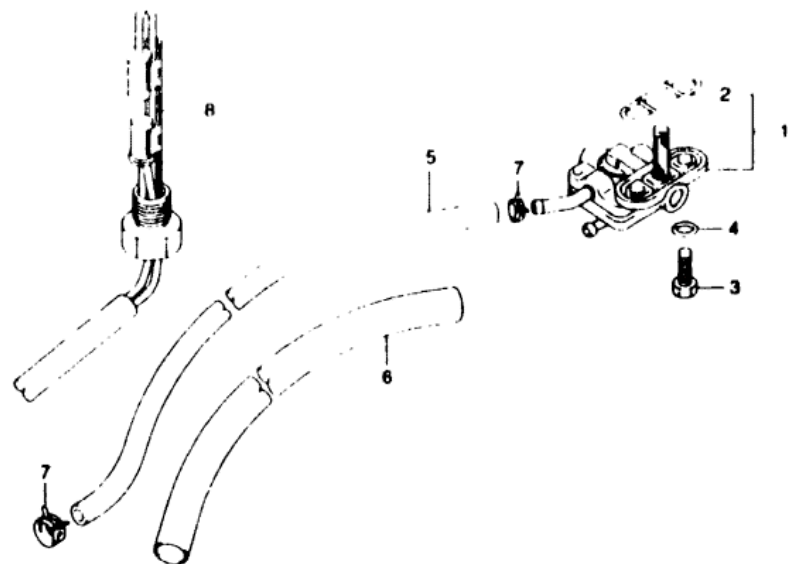


FIG 36 (G-7) FUEL COCK

REF.NO.	PART NO.	DESCRIPTION	Q'TY	REMARKS
1	44300-19F00	COCK ASSY. FUEL	1	
2	44351-33E00	O RING, JOINT	1	
3	09128-06057	BOLT	2	
4	09168-06026	GASKET (6.4X11.5X0.8)	2	
5	09355-50105-600	HOSE FUEL (L 600 *3411)	1	
6	09351 14152 600	PROTECTOR (L 600 *280)	1	
7	09401-09403	CLIP	2	
8	34810 19F10	GAUGE ASSY FUEL LEVEL	1	